

AVENUE CURVED BENCH

Seating » Benches



Collection: **Avenue**

Designed by: **Botton + Gardiner**

AVENUE CURVED BENCH

Seating » Benches



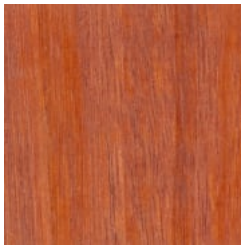
Hardwood Blackbutt
UV-Resistant Oil



Hardwood Spotted
Gum UV-Resistant
Oil



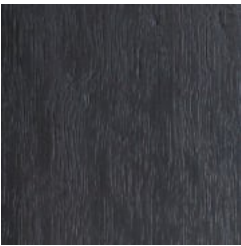
Hardwood Merbau
UV-Resistant Oil



Hardwood Mixed Red
UV-Resistant Oil
Clear



Hardwood Mixed Red
UV-Resistant Oil
Mahogany



Hardwood Mixed Red
UV-Resistant Oil
Ebony



Duraslat™ XG Ravine



Duraslat™ XG Cave



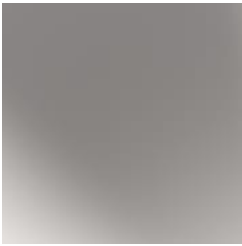
Duraslat™ XG Alcove



Duraslat™ XG
Boulder



Duraslat™ XG Dune



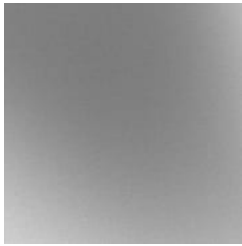
Clear Anodised
Aluminium



Alugrain Driftwood



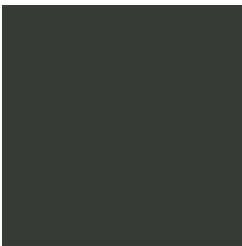
Alugrain Spotted
Gum



Galvanised Steel



Core Powder-Coat
White Satin



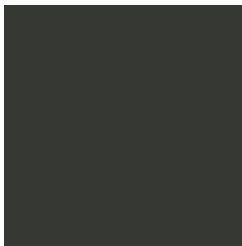
Core Powder-Coat
Black Satin



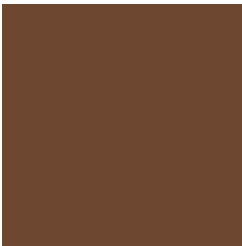
Core Powder-Coat
Charcoal Satin



Core Powder-Coat
Palladium Silver Satin



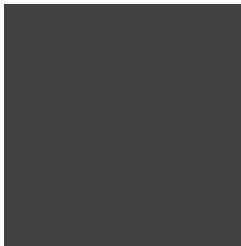
Core Powder-Coat
Matt Black Matt



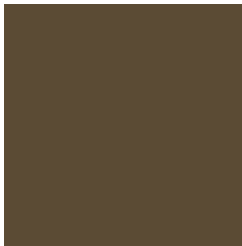
Solid Powder-Coat
Coffee Satin



Solid Powder-Coat
Cove Satin



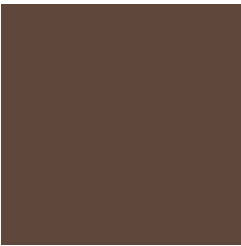
Solid Powder-Coat
Monument Matt



Solid Powder-Coat
Medium Bronze
Kinetic Flat

AVENUE CURVED BENCH

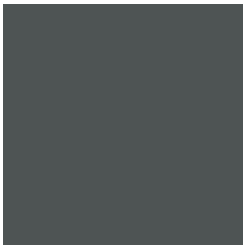
Seating » Benches



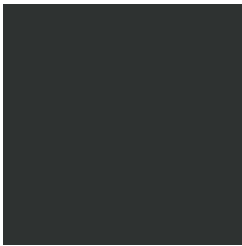
Textured Powder-Coat Core Ten
Textured Metallic



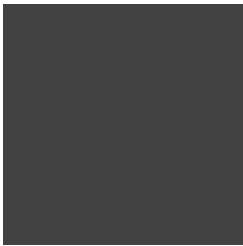
Textured Powder-Coat Asteroid
Textured Metallic



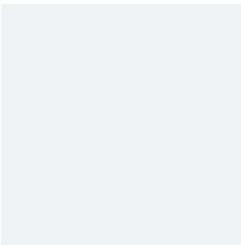
Textured Powder-Coat Bass Textured
Metallic



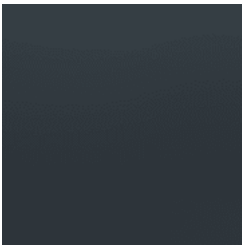
Textured Powder-Coat Textura Black



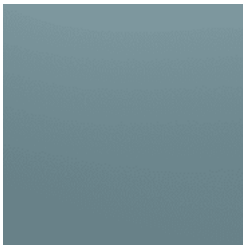
Textured Powder-Coat Textura
Monument



Textured Powder-Coat Textura White



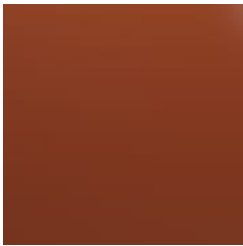
Signature Powder-Coat Deep Ocean
Satin



Signature Powder-Coat Wedgewood
Satin



Signature Powder-Coat Mangrove Satin



Signature Powder-Coat Territory Red
Satin



Signature Powder-Coat Claypot Satin



Signature Powder-Coat Paperbark Satin



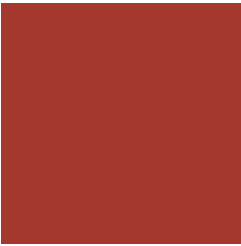
Bold Powder-Coat Bondi Blue Gloss



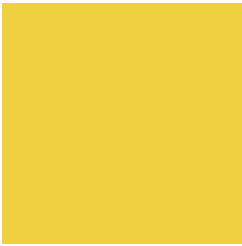
Bold Powder-Coat Leaf Satin



Bold Powder-Coat Sensation Gloss



Bold Powder-Coat Lobster Satin



Bold Powder-Coat Moonlight Satin

AVENUE CURVED BENCH

Seating » Benches



Modular seating breaks up linear spaces. Battens in hardwood, Duraslat™ XG, aluminium. Tapered steel frame in 27 powder-coat or galvanised finishes.

Description	Rectangular battens and a tapered steel frame combine to deliver a curved bench design that takes its cues from 20th century industrial design. The modularity allows for snaking curve, full ring or shallow bend configurations to be created to break up linear spaces. It is ideal for seating around trees, along curved garden beds and walls. The functional feel and light appearance of the Avenue curved bench complements and sits within most public spaces. Finishes include 5 hardwood, 5 Duraslat™ XG and 3 aluminium batten colours and 27 powder-coat finishes or a galvanised finish.
-------------	---

Made In	Australia
---------	-----------

Dimensions	Standard arc length: 2000mm Standard radius: 2000mm Seat depth: 440mm Seat height: 450mm **Radius as specified - minimum outer radius possible is 1000mm
------------	--

AVENUE CURVED BENCH

Seating » Benches

Batten Type	<div>Hardwood Blackbutt, Spotted Gum, Mixed Red - Clear, Mahogany, Ebony Oil</div> <div>Duraslat™ XG Ravine, Cave, Alcove, Boulder, Dune</div> <div>Aluminium Alugrain Clear Anodised, Driftwood, Spotted Gum</div>
Frame	<div>Powder-coated steel or hot-dip galvanised steel.</div> <div>Optional 316 stainless steel in matt textured frame finish available on request.</div>
Powder Coat	<div>Core White (satin), Black (satin), Charcoal (satin), Palladium Silver (satin), Matt Black (matt), Pearl White (gloss)</div> <div>Solid Coffee (satin), Cove (satin), Monument (matt), Medium Bronze Kinetic (flat)</div> <div>Textured Core Ten (textured metallic), Asteroid (textured metallic), Bass (textured metallic), Textura Black (textured), Textura Monument (textured), Textura White (textured)</div> <div>Signature Deep Ocean (satin), Wedgewood (satin), Mangrove (satin), Territory Red (matt), Claypot (satin), Paperbark (satin)</div> <div>Bold Bondi Blue (gloss), Leaf (satin), Sensation (gloss), Lobster (satin), Moonlight (satin)</div>
Sustainability	<div>Certified Hardwood All hardwood is sourced from sustainable forests certified by the Program for the Endorsement of Forest Certification (PEFC), the world's largest forestry certification system.</div> <div>Recycled Materials We locally source our steel. It means we know it uses recycled content and is 100% recyclable.</div> <div>Duraslat™ XG is made from 90% of recycled hardwood fibres and reclaimed plastic materials, which reduces demand for virgin materials.</div> <div>Low Pollutants Our powder-coating process doesn't emit Volatile Organic Compounds (VOCs) and has Environmental Product Declarations (EPDs).</div>

AVENUE CURVED BENCH

Seating » Benches

Warranty	5-year warranty. View the warranty for more details.
Lead Time	6-8 weeks
Assembly & Delivery	Shipped fully assembled on pallets.
Fixing Detail	Surface or sub-surface fixed by others. Anchors not included. Shims available for sub-surface fixing on request.
How to Specify	Select your length Select your batten finish Select your frame finish Select your fixing type

AVENUE CURVED BENCH

Seating » Benches

Care Instructions

Hardwood

Cleaning

Remove any loose surface deposits with a soft bristled brush and wipe down with fresh water and a non-abrasive cloth.

Oiling

Oiling of timber will postpone natural greying, repel moisture, improve mould resistance, help maintain a smooth surface texture and enhance the grain and colour.

To maintain, lightly sand rough areas of timber and brush on one coat of timber decking oil every 6 months or as required.

Duraslat™ XG

Cleaning

Simply wash down occasionally. Do not use high pressure cleaners.

Powder-Coat

Cleaning

Carefully remove any loose surface deposits with a wet sponge or soft bristled brush.

Use a soft (non-abrasive) cloth or brush and a diluted solution of mild detergent and warm water.

Ensure surfaces are thoroughly rinsed with clean fresh water after cleaning to remove all residues.

Never use thinners, abrasive cleaning agents, alcohol-based, acid or alkali cleaning agents.

Hot-Dip Galvanised Steel

For general cleaning of bulk contaminants such as dirt and the like, ordinary laundry soaps can be satisfactorily used.

For more stubborn or larger areas, the use of a low-pressure wash (eg. a gurney gun) with just pure water or in conjunction with proprietary cleaning materials, such as car wash or truck wash, can be effective. It is important that the steel be washed down with fresh water after cleaning.

The cleaning treatment of the galvanising should be conservative at first and then if the situation demands, the treatment can become steadily more aggressive. Also, wherever some form of mechanical abrasion or “scrubbing” is required, the use of a hard, plastic bristle brush is recommended. Steel bristle brushes are not to be used since they will cause discolouration.

Mechanical methods of cleaning zinc surfaces can cause aesthetic issues. The “cleaned” areas are likely to contrast with adjacent untreated surfaces and may take a significant period of time to weather to a uniform colour. If aesthetics is a large concern, it is advisable to first test the cleaning method in an inconspicuous area in case the aesthetic effect is unappealing.

AVENUE CURVED BENCH

Seating » Benches

Customisable	As this item is made to order locally, custom lengths are available on request.
Additional Comments	<p>Hardwood is treated with a UV-resistant oil finish.</p> <p>Hardwood, Duraslat™ XG radial battens are used.</p> <p>Curved benches are made to order to your specified radius and arc length. Drawings are issued for sign off prior to manufacture.</p>
