

# PROSPECT BLOCK SEAT

Seating » Seats

---



Collection: **Prospect**

Designed by: **Botton + Gardiner**

# PROSPECT BLOCK SEAT

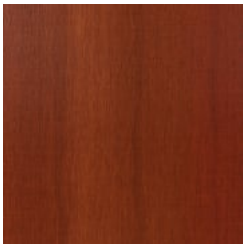
Seating » Seats



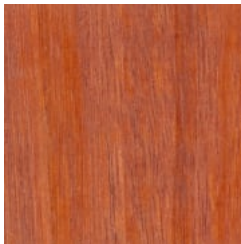
Hardwood Blackbutt  
UV-Resistant Oil



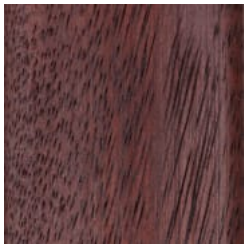
Hardwood Spotted  
Gum UV-Resistant  
Oil



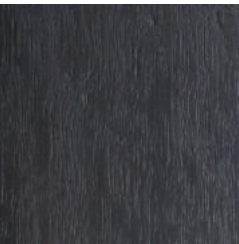
Hardwood Merbau  
UV-Resistant Oil



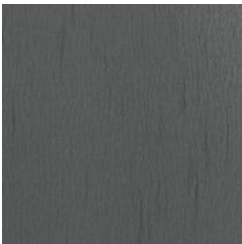
Hardwood Mixed Red  
UV-Resistant Oil Pine



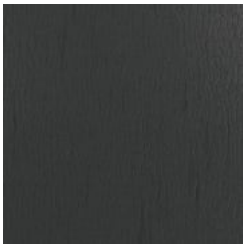
Hardwood Mixed Red  
UV-Resistant Oil  
Mahogany



Hardwood Mixed Red  
UV-Resistant Oil  
Ebony



Duraslat™ XG Ravine



Duraslat™ XG Cave



Duraslat™ XG Alcove



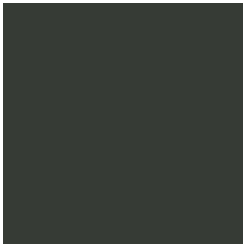
Duraslat™ XG  
Boulder



Duraslat™ XG Dune



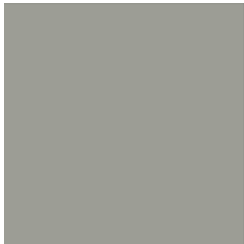
Core Powder-Coat  
White Satin



Core Powder-Coat  
Black Satin



Core Powder-Coat  
Charcoal Satin



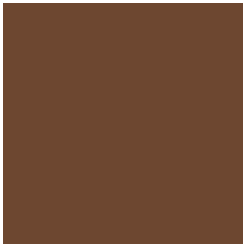
Core Powder-Coat  
Palladium Silver Satin



Core Powder-Coat  
Matt Black Matt



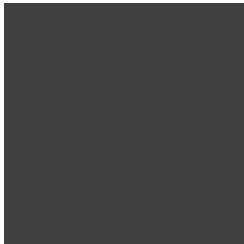
Core Powder-Coat  
Pearl White Gloss



Solid Powder-Coat  
Coffee Satin



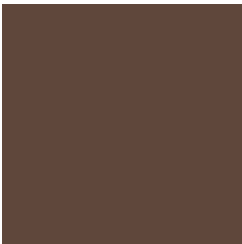
Solid Powder-Coat  
Cove Satin



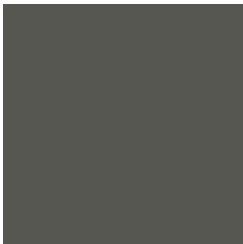
Solid Powder-Coat  
Monument Matt



Solid Powder-Coat  
Medium Bronze  
Kinetic Flat



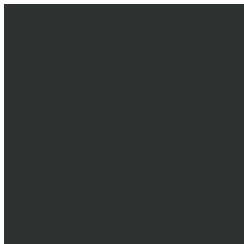
Textured Powder-  
Coat Core Ten  
Textured Metallic



Textured Powder-  
Coat Asteroid  
Textured Metallic



Textured Powder-  
Coat Bass Textured  
Metallic



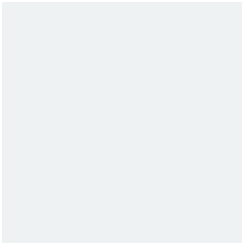
Textured Powder-  
Coat Textura Black

# PROSPECT BLOCK SEAT

Seating » Seats



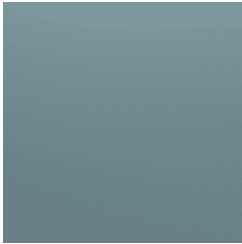
Textured Powder-Coat Textura Monument



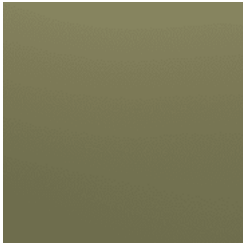
Textured Powder-Coat Textura White



Signature Powder-Coat Deep Ocean Satin



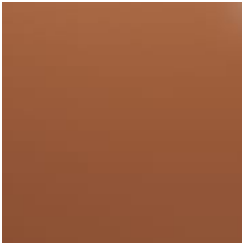
Signature Powder-Coat Wedgewood Satin



Signature Powder-Coat Mangrove Satin



Signature Powder-Coat Territory Red Satin



Signature Powder-Coat Claypot Satin



Signature Powder-Coat Paperbark Satin



Bold Powder-Coat Bondi Blue Gloss



Bold Powder-Coat Leaf Satin



Bold Powder-Coat Sensation Gloss



Bold Powder-Coat Lobster Satin



Bold Powder-Coat Moonlight Satin



# PROSPECT BLOCK SEAT

Seating » Seats



Robust block seat design with a concrete base. Hardwood and Duraslat™ XG battens with steel framing details in 27 powder-coat or galvanised finishes.

**Description**      Featuring striking asymmetrical forms and robust materials that are based on our competition-winning designs for the Western Sydney Parklands Trust, the Prospect block seat is ideal for parkland and urban environments. With a solid precast concrete base that grounds the design, the seat is available in 5 hardwood and 5 Duraslat™ XG batten colours with steel framing details in 27 powder-coat colours or a galvanised finish to blend in or contrast with the landscape it sits in.

**Made In**      Australia

**Dimensions**      Hardwood  
1600mmW x 607mmD x 770mmH  
  
Duraslat™ XG  
1600mmW x 607D x 770mmH  
  
Seat height: 445mm  
Half backrest option: 1050mmW

**Weight**      Approx. 240kg

# PROSPECT BLOCK SEAT

Seating » Seats

Batten Type	Hardwood Blackbutt, Spotted Gum, Mixed Red - Pine, Mahogany, Ebony Oil  Duraslat™ XG Ravine, Cave, Alcove, Boulder, Dune
Frame	Hot-dip galvanised or powder-coated steel  Armrest: hot-dip galvanised or powder-coated steel  Grey precast concrete block, off-form or acid etched exposed aggregate finish
Powder Coat	Core White (satin), Black (satin), Charcoal (satin), Palladium Silver (satin), Matt Black (matt), Pearl White (gloss)  Solid Coffee (satin), Cove (satin), Monument (matt), Medium Bronze Kinetic (flat)  Textured Core Ten (textured metallic), Asteroid (textured metallic), Bass (textured metallic), Textura Black (textured), Textura Monument (textured), Textura White (textured)  Signature Deep Ocean (satin), Wedgewood (satin), Mangrove (satin), Territory Red (matt), Claypot (satin), Paperbark (satin)  Bold Bondi Blue (gloss), Leaf (satin), Sensation (gloss), Lobster (satin), Moonlight (satin)
Sustainability	Certified Hardwood All hardwood is sourced from sustainable forests certified by the Program for the Endorsement of Forest Certification (PEFC), the world's largest forestry certification system.  Recycled Materials We locally source our steel. It means we know it uses recycled content and is 100% recyclable.  Duraslat™ XG is made from 90% of recycled hardwood fibres and reclaimed plastic materials, which reduces demand for virgin materials.  Low Pollutants Our powder-coating process doesn't emit Volatile Organic Compounds (VOCs) and has Environmental Product Declarations (EPDs).

# PROSPECT BLOCK SEAT

Seating » Seats

Warranty	5-year warranty. View the <a href="#">warranty</a> for more details.
Lead Time	6-8 weeks
Assembly & Delivery	Shipped fully assembled on pallets.
Fixing Detail	Surface or sub-surface fixed by others. Threaded rod to anchor supplied.
How to Specify	Select your cantilever orientation Select your backrest length Select your batten finish Select your frame finish
Care Instructions	<p><u>Hardwood</u></p> <p>Cleaning</p> <p>Remove any loose surface deposits with a soft bristled brush and wipe down with fresh water and a non-abrasive cloth.</p> <p>Oiling</p> <p>Oiling of timber will postpone natural greying, repel moisture, improve mould resistance, help maintain a smooth surface texture and enhance the grain and colour.</p> <p>To maintain, lightly sand rough areas of timber and brush on one coat of timber decking oil every 6 months or as required.</p> <p><u>Duraslat™ XG</u></p> <p>Cleaning</p> <p>Simply wash down occasionally. Do not use high pressure cleaners.</p> <p><u>Powder-Coat</u></p> <p>Cleaning</p> <p>Carefully remove any loose surface deposits with a wet sponge or soft bristled brush.</p> <p>Use a soft (non-abrasive) cloth or brush and a diluted solution of mild detergent and warm water.</p> <p>Ensure surfaces are thoroughly rinsed with clean fresh water after cleaning to remove all residues.</p> <p>Never use thinners, abrasive cleaning agents, alcohol-based, acid or alkali cleaning agents.</p>
Additional Comments	Options: left or right-hand cantilever (when seated), adding armrests, and a partial or full backrest.