

BONDI BIN

Bins » Bin Housings



Collection: **Bondi**

Designed by: **Botton + Gardiner**

BONDI BIN

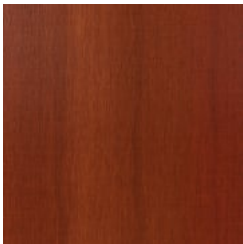
Bins » Bin Housings



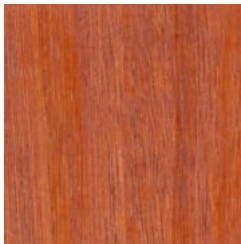
Hardwood Blackbutt
UV-Resistant Oil



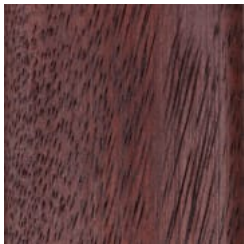
Hardwood Spotted
Gum UV-Resistant
Oil



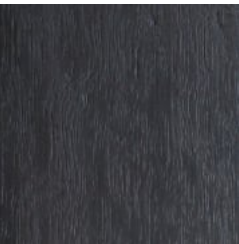
Hardwood Merbau
UV-Resistant Oil



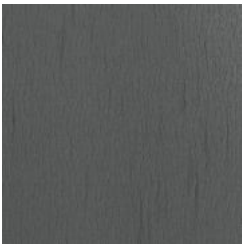
Hardwood Mixed Red
UV-Resistant Oil Pine



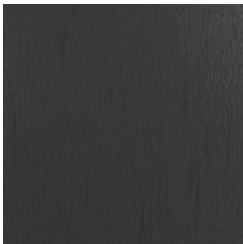
Hardwood Mixed Red
UV-Resistant Oil
Mahogany



Hardwood Mixed Red
UV-Resistant Oil
Ebony



Duraslat™ XG Ravine



Duraslat™ XG Cave



Duraslat™ XG Alcove



Duraslat™ XG
Boulder



Duraslat™ XG Dune



Laminex®
Multipurpose
Compact Laminate
Black



Laminex®
Multipurpose
Compact Laminate
Charcoal



Laminex®
Multipurpose
Compact Laminate
Lava Grey



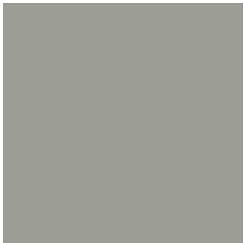
Core Powder-Coat
White Satin



Core Powder-Coat
Black Satin



Core Powder-Coat
Charcoal Satin



Core Powder-Coat
Palladium Silver Satin



Core Powder-Coat
Matt Black Matt



Core Powder-Coat
Pearl White Gloss



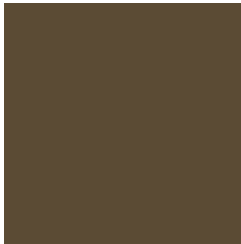
Solid Powder-Coat



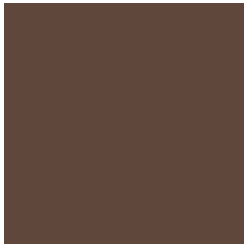
Solid Powder-Coat



Solid Powder-Coat



Solid Powder-Coat



Textured Powder-

BONDI BIN

Bins » Bin Housings

Coffee Satin	Cove Satin	Monument Matt	Medium Bronze Kinetic Flat	Coat Core Ten Textured Metallic
				
Textured Powder-Coat Asteroid Textured Metallic	Textured Powder-Coat Bass Textured Metallic	Textured Powder-Coat Textura Black	Textured Powder-Coat Textura Monument	Textured Powder-Coat Textura White
				
Signature Powder-Coat Deep Ocean Satin	Signature Powder-Coat Wedgewood Satin	Signature Powder-Coat Mangrove Satin	Signature Powder-Coat Territory Red Satin	Signature Powder-Coat Claypot Satin
				
Signature Powder-Coat Paperbark Satin	Bold Powder-Coat Bondi Blue Gloss	Bold Powder-Coat Leaf Satin	Bold Powder-Coat Sensation Gloss	Bold Powder-Coat Lobster Satin
				
Bold Powder-Coat Moonlight Satin				

BONDI BIN

Bins » Bin Housings



Compact single, double litter bin housings with hood. Panels in hardwood, Duraslat™ XG or v-groove compact laminate colours and powder-coat finishes.

Description	Designed with Australia’s most famous beach in mind, the Bondi single and double bin with a hood proves that litter bin housings can add to the aesthetics of outdoor public spaces. Its compact profile, curved corners, cut-out designs, plus a hood make it a sleek and versatile waste management option. Finishes include 5 hardwood, 5 Duraslat™ XG or v-groove compact laminate colours and 27 powder-coat finishes.
-------------	---

Made In	Australia
---------	-----------

BONDI BIN

Bins » Bin Housings

Dimensions	<u>80L</u>
	Single
	535mmW x 615mmD x 1095mmH
	Double
	1060mmW x 615mmD x 1095mmH
	Hood opening 180mmH
	<u>120L</u>
	Single
	605mmW x 640mmD x 1200mmH
	Double
	1175mmW x 640mmD x 1200mmH
	<u>240L</u>
	Single
	685mmW x 835mmD x 1295mmH

Capacity	<u>80L</u>
	Single
	1 x 80L wheelie bin
	Double
	2 x 80L wheelie bins
	<u>120L</u>
	Single
	1 x 120L wheelie bin
	Double
	2 x 120L wheelie bins
	<u>240L</u>
	Single
	1 x 240L wheelie bin
	Wheelie bin not included - available on request.

Frame	Powder-coated, zinc-primed steel
-------	----------------------------------

BONDI BIN

Bins » Bin Housings

Powder Coat

Core

White (satin), Black (satin), Charcoal (satin), Palladium Silver (satin), Matt Black (matt), Pearl White (gloss)

Solid

Coffee (satin), Cove (satin), Monument (matt), Medium Bronze Kinetic (flat)

Textured

Core Ten (textured metallic), Asteroid (textured metallic), Bass (textured metallic), Textura Black (textured), Textura Monument (textured), Textura White (textured)

Signature

Deep Ocean (satin), Wedgewood (satin), Mangrove (satin), Territory Red (matt), Claypot (satin), Paperbark (satin)

Bold

Bondi Blue (gloss), Leaf (satin), Sensation (gloss), Lobster (satin), Moonlight (satin)

Signage

Supplied with standard vinyl decal signage for the door panel for double capacity.

Optional signage can be added to back panel and on single units on request.

Finishes

Body + Chute

Powder-coated, zinc primed steel

Front + Back Panels

Hardwood

Blackbutt, Spotted Gum, Mixed Red - Pine, Mahogany, Ebony Oil

Duraslat™ XG

Ravine, Cave, Alcove, Boulder, Dune

V-Groove Compact Laminate

Cut-Out Designs (Perforation Patterns)

Dash or Speckle

Powder-Coat Colours

Standard or custom specified colour

Fittings

Compression lock prevents door rattling

BONDI BIN

Bins » Bin Housings

Sustainability	<p>Certified Hardwood All hardwood is sourced from sustainable forests certified by the Program for the Endorsement of Forest Certification (PEFC), the world's largest forestry certification system.</p> <p>Recycled Materials We locally source our steel. It means we know it uses recycled content and is 100% recyclable.</p> <p>Duraslat™ XG is made from 90% of recycled hardwood fibres and reclaimed plastic materials, which reduces demand for virgin materials.</p> <p>Low Pollutants Our powder-coating process doesn't emit Volatile Organic Compounds (VOCs) and has Environmental Product Declarations (EPDs).</p>
Warranty	5-year warranty. View the warranty for more details.
Lead Time	6-8 weeks
Assembly & Delivery	Due to their weight, double 120L Bondi bins will require a forklift or equivalent lifting equipment to unload on delivery (supplied by others).
Fixing Detail	<p>80L Loose or surface fixed by others. Anchors not included.</p> <p>120L + 240L Surface fixed by others. Anchors not included.</p>
How to Specify	<p>Select your size - single, double Select your capacity - 80L, 120L, 240L Select your body colour Select your feature panel design Select your feature panel colour Select your fixing type</p>

BONDI BIN

Bins » Bin Housings

Care Instructions

Hardwood

Cleaning

Remove any loose surface deposits with a soft bristled brush and wipe down with fresh water and a non-abrasive cloth.

Oiling

Oiling of timber will postpone natural greying, repel moisture, improve mould resistance, help maintain a smooth surface texture and enhance the grain and colour.

To maintain, lightly sand rough areas of timber and brush on one coat of timber decking oil every 6 months or as required.

Duraslat™ XG

Cleaning

Simply wash down occasionally. Do not use high pressure cleaners.

Powder-Coat

Cleaning

Carefully remove any loose surface deposits with a wet sponge or soft bristled brush.

Use a soft (non-abrasive) cloth or brush and a diluted solution of mild detergent and warm water.

Ensure surfaces are thoroughly rinsed with clean fresh water after cleaning to remove all residues.

Never use thinners, abrasive cleaning agents, alcohol-based, acid or alkali cleaning agents.

Customisable

Various door panels and an extensive colour selection is available making Bondi flexible to your style. We can customise signage to your requirements.
