

MAITLAND BIN

Bins » Bin Housings



Designed by: **Botton + Gardiner**

MAITLAND BIN

Bins » Bin Housings



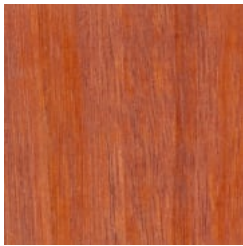
Hardwood Blackbutt
UV-Resistant Oil



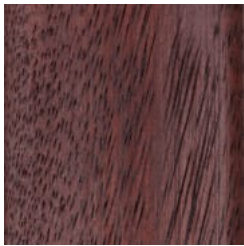
Hardwood Spotted
Gum UV-Resistant
Oil



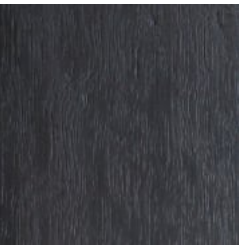
Hardwood Merbau
UV-Resistant Oil



Hardwood Mixed Red
UV-Resistant Oil Pine



Hardwood Mixed Red
UV-Resistant Oil
Mahogany



Hardwood Mixed Red
UV-Resistant Oil
Ebony



Duraslat™ XG Ravine



Duraslat™ XG Cave



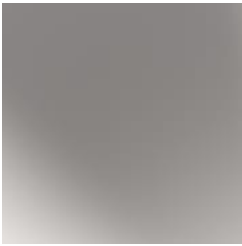
Duraslat™ XG Alcove



Duraslat™ XG
Boulder



Duraslat™ XG Dune



Natural Aluminium



Core Powder-Coat
White Satin



Core Powder-Coat
Black Satin



Core Powder-Coat
Charcoal Satin



Core Powder-Coat
Palladium Silver Satin



Core Powder-Coat
Matt Black Matt



Core Powder-Coat
Pearl White Gloss



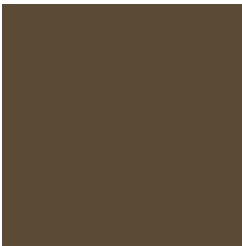
Solid Powder-Coat
Coffee Satin



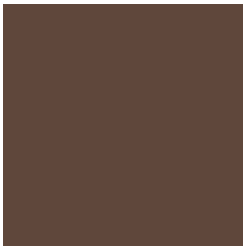
Solid Powder-Coat
Cove Satin



Solid Powder-Coat
Monument Matt



Solid Powder-Coat
Medium Bronze
Kinetic Flat



Textured Powder-
Coat Core Ten
Textured Metallic



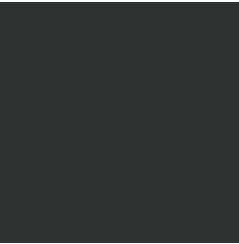
Textured Powder-
Coat Asteroid
Textured Metallic



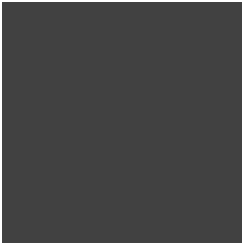
Textured Powder-
Coat Bass Textured
Metallic

MAITLAND BIN

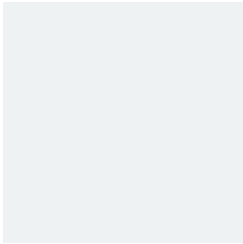
Bins » Bin Housings



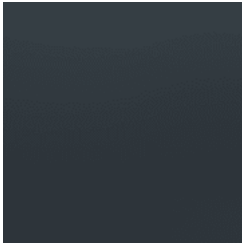
Textured Powder-Coat Textura Black



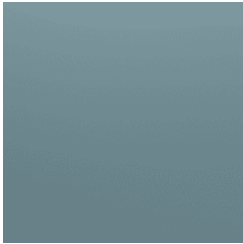
Textured Powder-Coat Textura Monument



Textured Powder-Coat Textura White



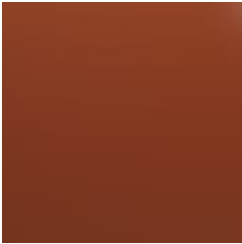
Signature Powder-Coat Deep Ocean Satin



Signature Powder-Coat Wedgewood Satin



Signature Powder-Coat Mangrove Satin



Signature Powder-Coat Territory Red Satin



Signature Powder-Coat Claypot Satin



Signature Powder-Coat Paperbark Satin



Bold Powder-Coat Bondi Blue Gloss



Bold Powder-Coat Leaf Satin



Bold Powder-Coat Sensation Gloss



Bold Powder-Coat Lobster Satin



Bold Powder-Coat Moonlight Satin

MAITLAND BIN

Bins » Bin Housings



Detailed single, double litter bin housings with a hood for outdoor use. Panels in hardwood, Duraslat™ XG colours or powder-coated cut-out designs.

Description It is hard to bypass the folded, sculptural polished lid of the Maitland bin housing as the perfect solution for elegant waste collection in streetscapes. The dynamic design and rugged functionality will give decades of value and efficiency. The Maitland co-ordinates well with our Urban and Prospect street furniture collections. Panels in hardwood, Duraslat™ XG colours or powder-coated cut-out designs.

Made In Australia

Dimensions

120L
Single: 635mmW x 675mmD x 1200mmH
Double: 635mmW x 675mmD x 1230mmH

240L
Single: 735mmW x 855mmD x 1330mmH
Double: 735mmW x 855mmD x 1360mmH

Hood height: 195mm

MAITLAND BIN

Bins » Bin Housings

Capacity	<div><div><u>120L</u></div><div>Single</div><div>1 x 120L wheelie bin</div></div> <div><div>Double</div><div>2 x 120L wheelie bins</div></div> <div><div><u>240L</u></div><div>Single</div><div>1x 240L wheelie bin</div></div> <div><div>Double</div><div>2 x 240L wheelie bins</div></div> <div>Wheelie bin not included - available on request.</div>
Batten Type	<div><div><u>Side Panels</u></div><div>Hardwood</div><div>Blackbutt, Spotted Gum, Mixed Red - Pine, Mahogany, Ebony Oil</div></div> <div><div>Duraslat™ XG</div><div>Ravine, Cave, Alcove, Boulder, Dune</div></div>
Frame	Powder-coated galvanised steel
Powder Coat	<div><div>Core</div><div>White (satin), Black (satin), Charcoal (satin), Palladium Silver (satin), Matt Black (matt), Pearl White (gloss)</div></div> <div><div>Solid</div><div>Coffee (satin), Cove (satin), Monument (matt), Medium Bronze Kinetic (flat)</div></div> <div><div>Textured</div><div>Core Ten (textured metallic), Asteroid (textured metallic), Bass (textured metallic), Textura Black (textured), Textura Monument (textured), Textura White (textured)</div></div> <div><div>Signature</div><div>Deep Ocean (satin), Wedgewood (satin), Mangrove (satin), Territory Red (matt), Claypot (satin), Paperbark (satin)</div></div> <div><div>Bold</div><div>Bondi Blue (gloss), Leaf (satin), Sensation (gloss), Lobster (satin), Moonlight (satin)</div></div>
Signage	Double bin modules come with general waste or recycling icons mounted to the doors to identify your litter and recycling sides.

MAITLAND BIN

Bins » Bin Housings

Finishes	<div>Hood</div> <div>Powder-coated or mirror polished aluminium</div> <div>Lid</div> <div>Mirror polished aluminium</div> <div>Feature Panels</div> <div>Powder-coated galvanised steel - perforated or plain (solid)</div> <div>Perforation Designs</div> <div>Wedge or Morse</div> <div>Powder-Coat Colours</div> <div>Select from the standard range or custom specify a colour</div> <div>Side Panels</div> <div>Hardwood battens: Blackbutt, Spotted Gum or Mixed Red - Pine, Mahogany, Ebony oil finish</div> <div>Duraslat™ XG battens: Ravine, Cave, Alcove, Boulder, Dune</div> <div>Fittings</div> <div>Compression lock prevents door rattling</div>
Sustainability	<div>Certified Hardwood</div> <div>All hardwood is sourced from sustainable forests certified by the Program for the Endorsement of Forest Certification (PEFC), the world's largest forestry certification system.</div> <div>Recycled Materials</div> <div>We locally source our steel and aluminium. It means we know it uses recycled content and is 100% recyclable.</div> <div>Duraslat™ XG is made from 90% of recycled hardwood fibres and reclaimed plastic materials, which reduces demand for virgin materials.</div> <div>Low Pollutants</div> <div>Our powder-coating process doesn't emit Volatile Organic Compounds (VOCs) and has Environmental Product Declarations (EPDs).</div>
Warranty	5-year warranty. View the warranty for more details.
Lead Time	4-6 weeks
Assembly & Delivery	Shipped fully assembled on pallets.
Fixing Detail	Surface fixed by others. Anchors not included.

MAITLAND BIN

Bins » Bin Housings

How to Specify

Select your size - single or double
Select your wheelie bin capacity - 120L or 240L
Select your feature panel design
Select your feature panel powder-coat colour
Select your side panel finish
Select your side panel colour
Opt to add the skillion hood
Select your skillion hood finish

Care Instructions

Hardwood

Cleaning

Remove any loose surface deposits with a soft bristled brush and wipe down with fresh water and a non-abrasive cloth.

Oiling

Oiling of timber will postpone natural greying, repel moisture, improve mould resistance, help maintain a smooth surface texture and enhance the grain and colour.

To maintain, lightly sand rough areas of timber and brush on one coat of timber decking oil every 6 months or as required.

Duraslat™ XG

Cleaning

Simply wash down occasionally. Do not use high pressure cleaners.

Powder-Coat

Cleaning

Carefully remove any loose surface deposits with a wet sponge or soft bristled brush.

Use a soft (non-abrasive) cloth or brush and a diluted solution of mild detergent and warm water.

Ensure surfaces are thoroughly rinsed with clean fresh water after cleaning to remove all residues.

Never use thinners, abrasive cleaning agents, alcohol-based, acid or alkali cleaning agents.

Customisable

The Maitland bin is locally made and customisable to suit your requirements.

MAITLAND BIN

Bins » Bin Housings

Additional Comments

- Options
Optional skillion hood looks great, prevents your liner filling with rainwater, stops dumping of large garbage bags and deters scavenging birds.
 - Additional Info
The polished aluminium lid won't corrode or tea stain and can be buffed back to new.
 - Compression lock tightens with a turn of the key and prevents rattling noise for peaceful streets.
 - Perforation designs are child safe, conforming to AS4685.1 finger entrapment guidelines on play equipment.
 - Heavy duty butt hinges will keep your doors level and issue free throughout the life of the bin.
-