

NOOSA BIN

Bins » Bin Housings



Designed by: **Botton + Gardiner**

NOOSA BIN

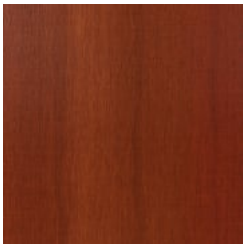
Bins » Bin Housings



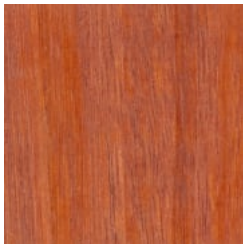
Hardwood Blackbutt
UV-Resistant Oil



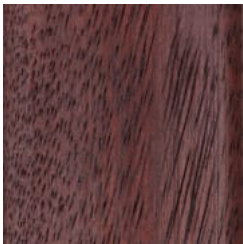
Hardwood Spotted
Gum UV-Resistant
Oil



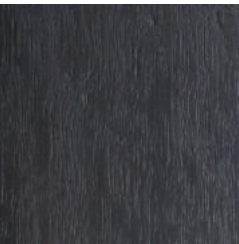
Hardwood Merbau
UV-Resistant Oil



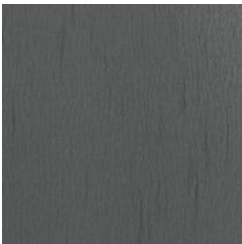
Hardwood Mixed Red
UV-Resistant Oil Pine



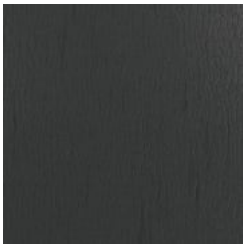
Hardwood Mixed Red
UV-Resistant Oil
Mahogany



Hardwood Mixed Red
UV-Resistant Oil
Ebony



Duraslat™ XG Ravine



Duraslat™ XG Cave



Duraslat™ XG Alcove



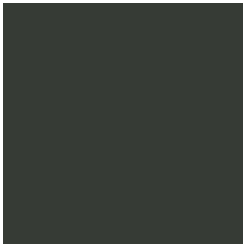
Duraslat™ XG
Boulder



Duraslat™ XG Dune



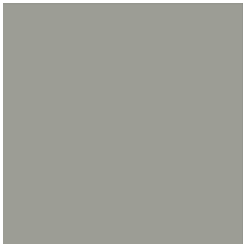
Core Powder-Coat
White Satin



Core Powder-Coat
Black Satin



Core Powder-Coat
Charcoal Satin



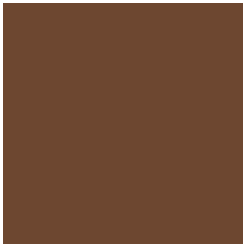
Core Powder-Coat
Palladium Silver Satin



Core Powder-Coat
Matt Black Matt



Core Powder-Coat
Pearl White Gloss



Solid Powder-Coat
Coffee Satin



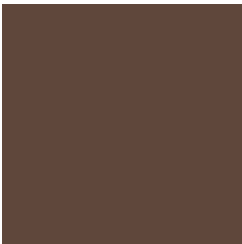
Solid Powder-Coat
Cove Satin



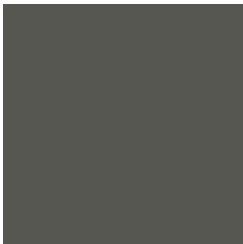
Solid Powder-Coat
Monument Matt



Solid Powder-Coat
Medium Bronze
Kinetic Flat



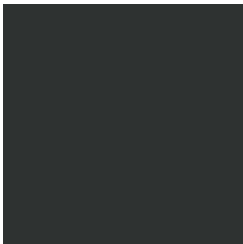
Textured Powder-
Coat Core Ten
Textured Metallic



Textured Powder-
Coat Asteroid
Textured Metallic



Textured Powder-
Coat Bass Textured
Metallic



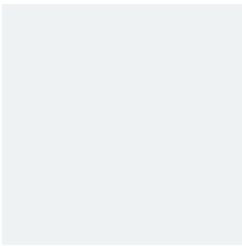
Textured Powder-
Coat Textura Black

NOOSA BIN

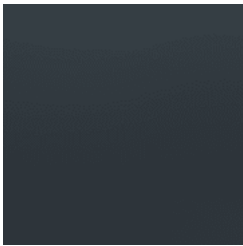
Bins » Bin Housings



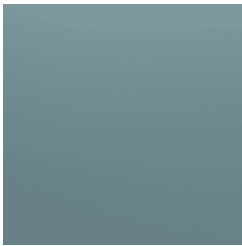
Textured Powder-Coat Textura Monument



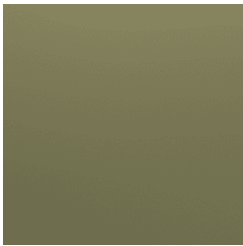
Textured Powder-Coat Textura White



Signature Powder-Coat Deep Ocean Satin



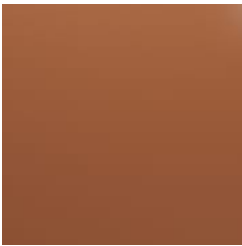
Signature Powder-Coat Wedgewood Satin



Signature Powder-Coat Mangrove Satin



Signature Powder-Coat Territory Red Satin



Signature Powder-Coat Claypot Satin



Signature Powder-Coat Paperbark Satin



Bold Powder-Coat Bondi Blue Gloss



Bold Powder-Coat Leaf Satin



Bold Powder-Coat Sensation Gloss



Bold Powder-Coat Lobster Satin



Bold Powder-Coat Moonlight Satin

NOOSA BIN

Bins » Bin Housings



Contemporary outdoor bin housing with 3 hood styles. Concealed hardware means clean lines. Panels in hardwood, Duraslat™ XG and powder-coat finishes.

Description

Noosa is the ultimate chameleon. Simple and contemporary, the no-fuss bin body can be dressed up with 3 hood styles, bold-coloured general waste or recycling limiters, textured or metallic powder-coats, and fun feature panels. Concealed hardware gives Noosa its smooth attitude, and ensures it's easy to clean down. Noosa can be a single bin housing or be paired together. This is style that won't break the bank, so you can get on with your job.

Made In Australia

NOOSA BIN

Bins » Bin Housings

Dimensions	<div><div><u>120L</u> Taper 635mmW x 675mmD x 1200mmH</div><div>Lean 635mmW x 675mmD x 1230mmH</div><div>Skillion 635mmW x 675mmD x 1210mmH</div></div> <div><div><u>240L</u> Taper 735mmW x 855mmD x 1330mmH</div><div>Lean 735mmW x 855mmD x 1360mmH</div><div>Skillion 735mmW x 855mmD x 1340mmH</div></div>
Capacity	<div><div><u>120L</u> Single 1 x 120L wheelie bin</div><div><u>240L</u> Single 1x 240L wheelie bin</div><div>Wheelie bin not included - available on request.</div></div>
Frame	Internal stainless steel frame and powder-coated galvanised steel body.
Powder Coat	<div><div>Core White (satin), Black (satin), Charcoal (satin), Palladium Silver (satin), Matt Black (matt), Pearl White (gloss)</div><div>Solid Coffee (satin), Cove (satin), Monument (matt), Medium Bronze Kinetic (flat)</div><div>Textured Core Ten (textured metallic), Asteroid (textured metallic), Bass (textured metallic), Textura Black (textured), Textura Monument (textured), Textura White (textured)</div><div>Signature Deep Ocean (satin), Wedgewood (satin), Mangrove (satin), Territory Red (matt), Claypot (satin), Paperbark (satin)</div><div>Bold Bondi Blue (gloss), Leaf (satin), Sensation (gloss), Lobster (satin), Moonlight (satin)</div></div>

NOOSA BIN

Bins » Bin Housings

Signage	Round vinyl decal signage on the door panel.
Finishes	<div><div>Hood</div><div>Powder-coated aluminium</div></div> <div><div>Internal Frame</div><div>Stainless steel</div></div> <div><div>Feature Panel</div><div>Cut-out designs (perforation patterns): Horizon, Rain</div></div> <div><div>Hardwood: Blackbutt, Spotted Gum, Mixed Red - Pine, Mahogany, Ebony Oil</div></div> <div><div>Duraslat™ XG: Ravine, Cave, Alcove, Boulder, Dune</div></div> <div><div>Note: when hardwood or Duraslat™ XG battens are used on the front feature panel, the back panel of the bin will feature the Rain perforation.</div></div> <div><div>Body Panels + Chute</div><div>Powder-coated galvanised steel</div></div> <div><div>Powder-Coat Colours</div><div>Standard or custom specified colour</div></div> <div><div>Fittings</div><div>Compression lock prevents door rattling</div><div>Signage: round vinyl decal to door</div></div>
Sustainability	<div><div>Certified Hardwood</div><div>All hardwood is sourced from sustainable forests certified by the Program for the Endorsement of Forest Certification (PEFC), the world's largest forestry certification system.</div></div> <div><div>Recycled Materials</div><div>We locally source our steel and aluminium. It means we know it uses recycled content and is 100% recyclable.</div></div> <div><div>Duraslat™ XG</div><div>is made from 90% of recycled hardwood fibres and reclaimed plastic materials, which reduces demand for virgin materials.</div></div> <div><div>Low Pollutants</div><div>Our powder-coating process doesn't emit Volatile Organic Compounds (VOCs) and has Environmental Product Declarations (EPDs).</div></div>
Warranty	5-year warranty. View the warranty for more details.
Lead Time	6-8 weeks
Assembly & Delivery	Shipped fully assembled on pallets.

NOOSA BIN

Bins » Bin Housings

Fixing Detail	Surface fixed by others. Anchors not included.
---------------	--

How to Specify	Select your wheelie bin capacity - 120L or 240L Select your hood - Taper, Lean, or Skillion Add limiters (Taper or Lean) - general waste or recycling Select your feature panel finish Select your feature panel colour Select your body powder-coat colour Select your hood powder-coat colour Select your vinyl decal - general waste or recycling
----------------	---

Care Instructions	<p><u>Hardwood</u> Cleaning Remove any loose surface deposits with a soft bristled brush and wipe down with fresh water and a non-abrasive cloth.</p> <p>Oiling Oiling of timber will postpone natural greying, repel moisture, improve mould resistance, help maintain a smooth surface texture and enhance the grain and colour.</p> <p>To maintain, lightly sand rough areas of timber and brush on one coat of timber decking oil every 6 months or as required.</p> <p><u>Duraslat™ XG</u> Cleaning Simply wash down occasionally. Do not use high pressure cleaners.</p> <p><u>Powder-Coat</u> Cleaning Carefully remove any loose surface deposits with a wet sponge or soft bristled brush.</p> <p>Use a soft (non-abrasive) cloth or brush and a diluted solution of mild detergent and warm water.</p> <p>Ensure surfaces are thoroughly rinsed with clean fresh water after cleaning to remove all residues.</p> <p>Never use thinners, abrasive cleaning agents, alcohol-based, acid or alkali cleaning agents.</p>
-------------------	---

Customisable	The Noosa bin is locally made and customisable to suit your requirements.
--------------	---

NOOSA BIN

Bins » Bin Housings

Additional Comments

Options
3 hood styles to select from - Taper, Lean or Skillion.

Bold coloured limiters for general waste (red) or recycling (yellow) can be added to Taper and Lean.

Skillion hoods can be powder-coated in custom colours to identify between general waste (red) and recycling (yellow) on request (set up fees apply).

Additional Info
The array of hoods, finishes and colour options makes Noosa the ultimate chameleon, transforming into the perfect project fit.

Compression lock tightens with a turn of the key and prevents rattling noise for peaceful streets.

Perforation designs are child safe, conforming to AS4685.1 finger entrapment guidelines on play equipment.

Heavy duty butt hinges will keep your doors level and issue free throughout the life of the bin.
