

AMBRA BENCH

Seating » Benches



Collection: **Metalco**

Designed by: **Alena Mocova**

AMBRA BENCH

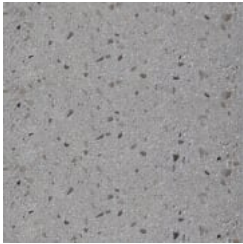
Seating » Benches



Precast Concrete
White Granite
Brushed



Precast Concrete
White Granite
Sandblasted



Precast Concrete
Grey Granite Brushed



Precast Concrete
Grey Granite
Sandblasted



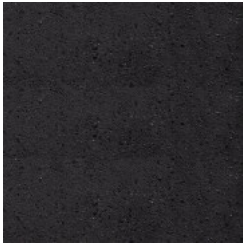
Precast Concrete
White Marble
Brushed



Precast Concrete
White Marble
Sandblasted



Precast Concrete
Black Marble
Brushed



Precast Concrete
Black Marble
Sandblasted

AMBRA BENCH

Seating » Benches



Monolithic bench seating. Solid cantilevered form in precast concrete with stone aggregate grounds the design and provides an unexpected lightness.

Description The monolithic Ambra bench, designed by Alena Mocova for Metalco, features a simple, solid cantilevered form in precast concrete with stone aggregate that both grounds the design while providing an unexpected lightness. Stone aggregate options include white or grey granite and white or black marble for a touch of elegance. Featuring a brushed top and sandblasted sides for a textural contrast, the bench can be used as a subtle statement piece in many outdoor public spaces.

Made In Europe

Dimensions 1350mmW x 450mmD x 450mmH

Weight 327kg

AMBRA BENCH

Seating » Benches

| | |
|---------------------|---|
| Frame | <div>Body</div> <div>Precast concrete with stone aggregate</div> <div>4 options: White Granite, Grey Granite, White Marble, Black Marble</div> <div>Body Finish</div> <div>Brushed top and sandblasted sides</div> <div>Optional</div> <div>Clear anti-graffiti coating</div> |
| Warranty | 5-year warranty. View the warranty for more details. |
| Lead Time | 12+ weeks. |
| Assembly & Delivery | <div>Product supplied packed on pallets.</div> <div>Lifting equipment required for receipt and placement of concrete product (by others). Supplied with ferrules, eyebolts and caps.</div> |
| Fixing Detail | Surface fixed by others. Threaded rod for anchoring included. |
| How to Specify | <div>Select your product</div> <div>Select optional anti-graffiti coating</div> |

AMBRA BENCH

Seating » Benches

Care Instructions

Precast Concrete

Cleaning

Remove any loose surface deposits with a brush.

Regularly wash the coating using a solution of warm water and non-abrasive, pH neutral detergent solution (with low wax content).

Thoroughly rinse the surfaces after cleaning to remove all residues. You can use a sponge, a soft bristle brush or pressure water cleaners. For pressure cleaners ensure you use cold or warm water and average pressure. Rinse after with fresh water and leave to dry.

Do not use abrasive sponges, discs, or brushes.

Do not use corrosive detergents, descaling agents, or acidic components (bleach, ammonia, vinegar, abrasive pastes).

For cleaning marks or solidified substances from the surface use slightly abrasive sponges for non-stick ceramic pans, accurately and lightly treat the parts to be cleaned as above. Please check with Botton + Gardiner for advice relating to cleaning special circumstances (i.e. stains from paint, acid, etc.) as required.

Maintenance

For surfaces prone to additional wear like that used for street furniture, regular treatment is recommended (at least every 2 years) with products containing high wax content. Evenly apply the product with a soft cloth and polish with a circular motion.

Avoid the products from being placed on surfaces subject to infiltrations or stagnant water puddles.

Additional Comments

Upon request, if the product allows it, it is possible to perform polishing operations.

The finished products are treated with a revitalizing varnish and, if requested, anti-graffiti treatment can be applied.
