

# URBAN POST TABLE AS1428.2 SIDE ACCESS

Tables » Dining Height Tables

---



Collection: **Urban**

Designed by: **Botton + Gardiner**

# URBAN POST TABLE AS1428.2 SIDE ACCESS

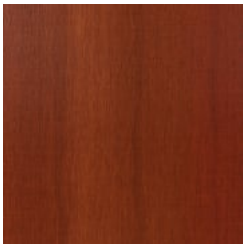
Tables » Dining Height Tables



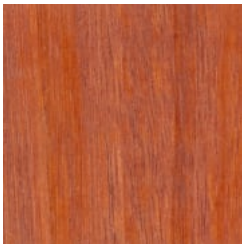
Hardwood Blackbutt  
UV-Resistant Oil



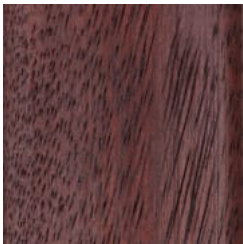
Hardwood Spotted  
Gum UV-Resistant  
Oil



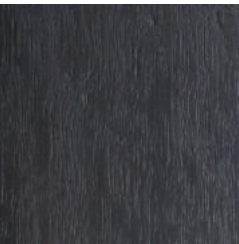
Hardwood Merbau  
UV-Resistant Oil



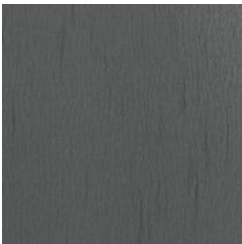
Hardwood Mixed Red  
UV-Resistant Oil  
Clear



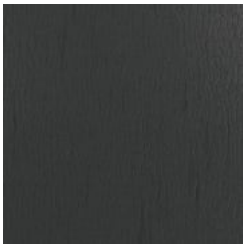
Hardwood Mixed Red  
UV-Resistant Oil  
Mahogany



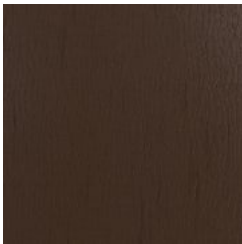
Hardwood Mixed Red  
UV-Resistant Oil  
Ebony



Duraslat™ XG Ravine



Duraslat™ XG Cave



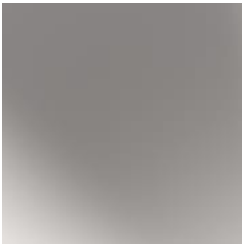
Duraslat™ XG Alcove



Duraslat™ XG  
Boulder



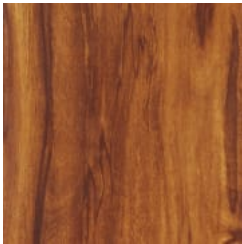
Duraslat™ XG Dune



Clear Anodised  
Aluminium



Alugrain Driftwood



Alugrain Spotted  
Gum

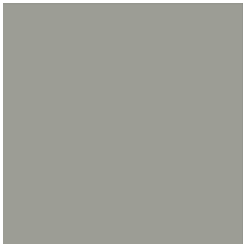
Core Powder-Coat  
White Satin



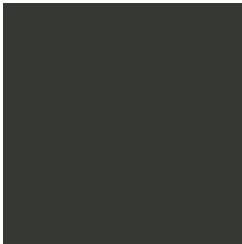
Core Powder-Coat  
Black Satin



Core Powder-Coat  
Charcoal Satin



Core Powder-Coat  
Palladium Silver Satin



Core Powder-Coat  
Matt Black Matt

Core Powder-Coat  
Pearl White Gloss



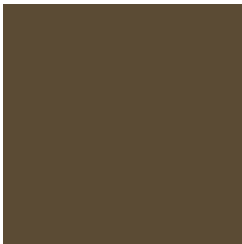
Solid Powder-Coat  
Coffee Satin



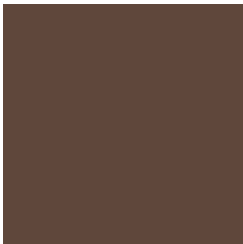
Solid Powder-Coat  
Cove Satin



Solid Powder-Coat  
Monument Matt



Solid Powder-Coat  
Medium Bronze  
Kinetic Flat



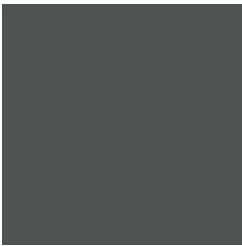
Textured Powder-  
Coat Core Ten  
Textured Metallic

# URBAN POST TABLE AS1428.2 SIDE ACCESS

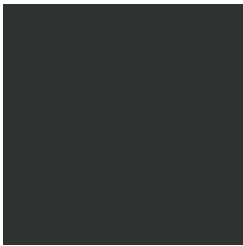
Tables » Dining Height Tables



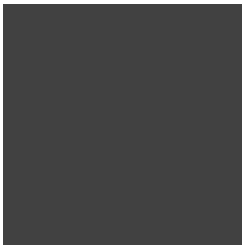
Textured Powder-Coat Asteroid  
Textured Metallic



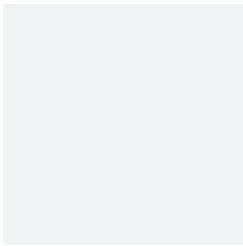
Textured Powder-Coat Bass Textured  
Metallic



Textured Powder-Coat Textura Black



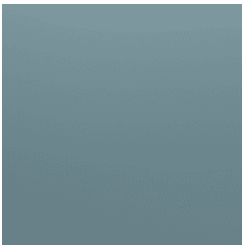
Textured Powder-Coat Textura  
Monument



Textured Powder-Coat Textura White



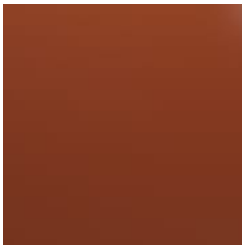
Signature Powder-Coat Deep Ocean  
Satin



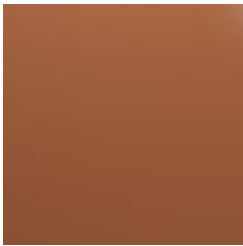
Signature Powder-Coat Wedgewood  
Satin



Signature Powder-Coat Mangrove Satin



Signature Powder-Coat Territory Red  
Satin



Signature Powder-Coat Claypot Satin



Signature Powder-Coat Paperbark Satin



Bold Powder-Coat Bondi Blue Gloss



Bold Powder-Coat Leaf Satin



Bold Powder-Coat Sensation Gloss



Bold Powder-Coat Lobster Satin



Bold Powder-Coat Moonlight Satin

# URBAN POST TABLE AS1428.2 SIDE ACCESS

Tables » Dining Height Tables



Post table AS1428.2 with side access. Hardwood, Duraslat™ XG, aluminium battens with a cast aluminium frame in 27 powder-coat finishes or polished.

## AS1428.2

### Description

Referencing Paris’s famous wrought ironwork, curved cast aluminium framing is complemented by muscular hardwood, Duraslat™ XG or aluminium surfaces to offer a timeless Urban post table AS1428.2 with side access. It includes wheelchair accessible settings and this table meets Australian Standards 1428.2 for wheelchair access to the table side. Locally made with low lead times, pair with benches and seats from the Urban range to create comfortable and durable picnic settings, ideal for parks, public spaces, universities and shopping centres. Finishes include 5 hardwood, 5 Duraslat™ XG or 3 aluminium colours and 27 powder-coat finishes or a polished aluminium finish. Urban is close to our heart; a classic, elegant, and highly functional collection that works in almost any public space.

### Made In

Australia

# URBAN POST TABLE AS1428.2 SIDE ACCESS

Tables » Dining Height Tables

Dimensions	Hardwood 1800mmW x 740mmD x 868mmH  Duraslat™ XG 1600mmW x 740mmD x 868mmH  Aluminium   Alugrain 2000mmW x 740mmD x 868mmH
Batten Type	Hardwood Blackbutt, Spotted Gum, Mixed Red - Pine, Mahogany, Ebony Oil  Duraslat™ XG Ravine, Cave, Alcove, Boulder, Dune  Aluminium   Alugrain Clear Anodised, Driftwood, Spotted Gum
Frame	Cast aluminium in a powder-coat or polished finish  Post: powder-coated galvanised steel, colour to match frame specification or silver to coordinate with the polished aluminium finish
Powder Coat	Core White (satin), Black (satin), Charcoal (satin), Palladium Silver (satin), Matt Black (matt), Pearl White (gloss)  Solid Coffee (satin), Cove (satin), Monument (matt), Medium Bronze Kinetic (flat)  Textured Core Ten (textured metallic), Asteroid (textured metallic), Bass (textured metallic), Textura Black (textured), Textura Monument (textured), Textura White (textured)  Signature Deep Ocean (satin), Wedgewood (satin), Mangrove (satin), Territory Red (matt), Claypot (satin), Paperbark (satin)  Bold Bondi Blue (gloss), Leaf (satin), Sensation (gloss), Lobster (satin), Moonlight (satin)

# URBAN POST TABLE AS1428.2 SIDE ACCESS

Tables » Dining Height Tables

Sustainability	<p>Certified Hardwood All hardwood is sourced from sustainable forests certified by the Program for the Endorsement of Forest Certification (PEFC), the world's largest forestry certification system.</p> <p>Recycled Materials We locally source our aluminium. It means we know it uses recycled content and is 100% recyclable.</p> <p>Duraslat™ XG is made from 90% of recycled hardwood fibres and reclaimed plastic materials, which reduces demand for virgin materials.</p> <p>Low Pollutants Our powder-coating process doesn't emit Volatile Organic Compounds (VOCs) and has Environmental Product Declarations (EPDs).</p>
Warranty	5-year warranty. View the <a href="#">warranty</a> for more details.
Lead Time	6-8 weeks
Assembly & Delivery	Shipped fully assembled on pallets.
Fixing Detail	Post fixed by others - surface, sub-surface or core-holed. Anchors not included.
How to Specify	<p>Select your length</p> <p>Select your batten finish</p> <p>Select your frame finish</p> <p>Select your fixing type</p>

# URBAN POST TABLE AS1428.2 SIDE ACCESS

Tables » Dining Height Tables

## Care Instructions

### Hardwood

#### Cleaning

Remove any loose surface deposits with a soft bristled brush and wipe down with fresh water and a non-abrasive cloth.

#### Oiling

Oiling of timber will postpone natural greying, repel moisture, improve mould resistance, help maintain a smooth surface texture and enhance the grain and colour.

To maintain, lightly sand rough areas of timber and brush on one coat of timber decking oil every 6 months or as required.

### Duraslat™ XG

#### Cleaning

Simply wash down occasionally. Do not use high pressure cleaners.

### Powder-Coat

#### Cleaning

Carefully remove any loose surface deposits with a wet sponge or soft bristled brush.

Use a soft (non-abrasive) cloth or brush and a diluted solution of mild detergent and warm water.

Ensure surfaces are thoroughly rinsed with clean fresh water after cleaning to remove all residues.

Never use thinners, abrasive cleaning agents, alcohol-based, acid or alkali cleaning agents.

## Additional Comments

This table meets the guidelines of Australian Standards 1428.2 for wheelchair accessibility, and with correct installation, will aid in achieving project DDA compliance.

### Seating Options

Urban Classic Bench

Urban Classic Seat

Pair with 1x 600mm wide and 1x full table length bench or seat. Botton + Gardiner recommends shimming seating to increase seat height with increased table height.

Opt to add Umbrella hole + flange or outdoor power and GPOs to make your settings flexible outdoor working zones ideal for universities and schools.