

# NEXUS ANGLED OTTOMAN

Seating » Ottomans



Collections: **Nexus**

Designed By: **Botton + Gardiner**

Applications: **Indoor**

# NEXUS ANGLED OTTOMAN

Seating » Ottomans



# NEXUS ANGLED OTTOMAN

Seating » Ottomans

---

Modern, modular, angled ottoman design. Mix and match upholstery fabrics, multipurpose compact laminates, solid surfaces, and powder-coat colours.

---

## Description

Modest modularity and organic forms define the Nexus angled ottoman that can be integrated with other modular lounge seating elements, tables, planters and litter bins that interconnect in multiple ways to become a central meeting place in a range of indoor spaces. Suitable for shopping centre breakout areas, educational collaborative spaces, transit zones and commercial lobbies, Nexus is both highly versatile and flexible. Available in an extensive range of hard-wearing materials, finishes and colours, Nexus can be customised to suit your next interior project.

---

## How to Specify

Select your configuration or create your own  
Select your fit for purpose upholstery fabric  
Select your surface finish  
Select your frame finish

---

## Sustainability

### Recycled Materials

We locally source our aluminium. It means we know it uses recycled content and is 100% recyclable.

### Low Pollutants

Our powder-coating process doesn't emit Volatile Organic Compounds (VOCs) and has Environmental Product Declarations (EPDs).

---

## Finishes

### Upholstery Fabrics

Specify a Baresque upholstery fabric or supply your own to be approved by us to ensure it is fit for purpose.

### [Baresque](#)

[Meru](#) - Lake, Abyss, Charcoal, Root, Nickel, Vellum, Chablis, Caribbean, Emerald, Tranquil, Nectar, Fiesta

### Approved Baresque Fabric Collections

[Abilene](#), [Cassidy](#), [Castle](#), [Chamois](#), [Gleam Beyond](#), [Lara](#), [Meru](#), [Ranger](#), [Inception Galleria](#), [Sebago](#), [Spirit Vinyl Up](#), [Uptown 3](#), [Yosemite](#).

A wider selection of materials + finishes is available.

---

# NEXUS ANGLED OTTOMAN

Seating » Ottomans

---

Powder Coat	<p>Core White (satin), Black (satin), Charcoal (satin), Palladium Silver (satin), Matt Black (matt), Pearl White (gloss)</p> <p>Solid Coffee (satin), Cove (satin), Monument (matt), Medium Bronze Kinetic (flat)</p> <p>Textured Core Ten (textured metallic), Asteroid (textured metallic), Bass (textured metallic), Textura Black (textured), Textura Monument (textured), Textura White (textured)</p> <p>Signature Deep Ocean (satin), Wedgewood (satin), Mangrove (satin), Territory Red (matt), Claypot (satin), Paperbark (satin)</p> <p>Bold Bondi Blue (gloss), Leaf (satin), Sensation (gloss), Lobster (satin), Moonlight (satin)</p>
-------------	--

---

Dimensions	2700mmW x 1040mmD x 450mmH
------------	----------------------------

---

Fabric Amount Required	5.5m - based on one plain fabric 137cm wide.
------------------------	--

---

Frame	<p>Internal Frame Medium Density Fibreboard (MDF)</p> <p>Kick Plate Powder-coated aluminium</p>
-------	---

---

Made In	Australia
---------	-----------

---

Lead Time	6-8 weeks
-----------	-----------

---

Assembly & Delivery	Shipped fully assembled on pallets.
---------------------	-------------------------------------

---

Fixing Detail	Freestanding only - loose on glides. Modules are fixed together by ratchet connectors.
---------------	--

---

# NEXUS ANGLED OTTOMAN

Seating » Ottomans

---

## Care Instructions

### Baresque Upholstery Fabrics

Use a cloth with any of the following in preferred order of use:

1. Clear warm water
2. Mild solution of liquid detergent and warm water
3. Isopropyl Alcohol (rubbing alcohol)

Remove any detergent with a clean, damp cloth. Gently pat dry.

For more difficult stains, dampen a soft white cloth with a solution of household bleach (mix 10% bleach with 90% water). Rub gently. Rinse with a water dampened cloth to remove bleach concentration.

Do not use solvent based or concentrated abrasive cleaning agents, lacquer thinners or nail polish remover as these may cause discolouration over a period of time.

Always test in an inconspicuous area first.

### Multipurpose Compact Laminates | Laminex®

A damp cloth will remove spills and greasy spots. Rub with a clean dry cloth to bring back brightness. Occasionally clean with mild dishwashing detergent. To remove heavy build-up of dirt use cleaners such as Mr Muscle, Windex, or Ajax Spray n Wipe spray cleaners.

Do not use strong acidic, alkaline cleaners or bleach for normal cleaning as these might etch the surface.

### Solid Surfaces | Corian®

Generally, when caring for Corian always start with a simple clean eg. using a damp sponge or cloth. Avoid using abrasive scouring pads for routine cleaning. Rinse clean.

For a deep clean of stubborn stains, a more thorough clean and refresh using a mild abrasive cleanser is recommended like Gumption, JIF Cream Cleanser or Ajax cream or powder cleanser. Firmly wipe with a damp cloth using a wide circular motion. Always finish by rinsing and wiping your surface with a damp cloth or sponge.

### Powder-Coat Finishes

Carefully remove any loose surface deposits with a wet sponge or soft bristled brush.

Use a soft (non-abrasive) cloth or brush and a diluted solution of mild detergent and warm water.

Ensure surfaces are thoroughly rinsed with clean fresh water after cleaning to remove all residues.

Never use thinners, abrasive cleaning agents, alcohol-based, acid or alkali cleaning agents.

---

## Warranty

2-year warranty. View the [warranty](#) for more details.

---

# NEXUS ANGLED OTTOMAN

Seating » Ottomans

---

## Additional Comments

Commercial-grade, high-density foam with a dacron top layer is used for padding and comfort.

---

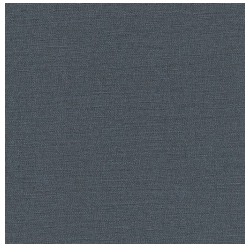
# NEXUS ANGLED OTTOMAN

Seating » Ottomans

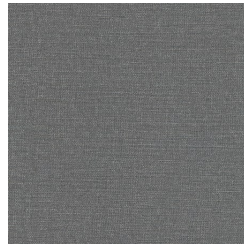
## Colour & Finish Options



Baresque Meru  
Upholstery Fabric  
Lake



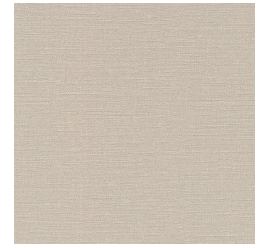
Baresque Meru  
Upholstery Fabric  
Abyss



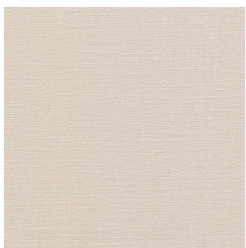
Baresque Meru  
Upholstery Fabric  
Charcoal



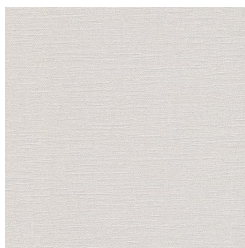
Baresque Meru  
Upholstery Fabric  
Root



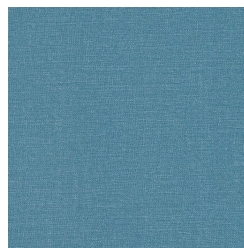
Baresque Meru  
Upholstery Fabric  
Nickel



Baresque Meru  
Upholstery Fabric  
Vellum



Baresque Meru  
Upholstery Fabric  
Chablis



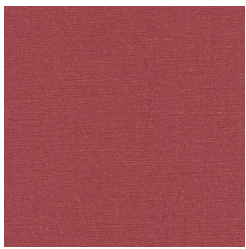
Baresque Meru  
Upholstery Fabric  
Caribbean



Baresque Meru  
Upholstery Fabric  
Emerald



Baresque Meru  
Upholstery Fabric  
Nectar



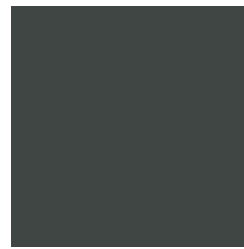
Baresque Meru  
Upholstery Fabric  
Fiesta



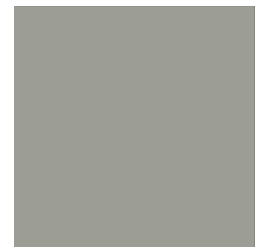
Core Powder-Coat  
White Satin



Core Powder-Coat  
Black Satin



Core Powder-Coat  
Charcoal Satin



Core Powder-Coat  
Palladium Silver Satin



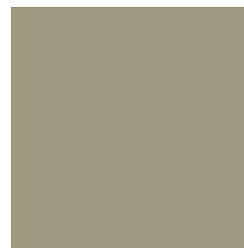
Core Powder-Coat  
Matt Black Matt



Core Powder-Coat  
Pearl White Gloss



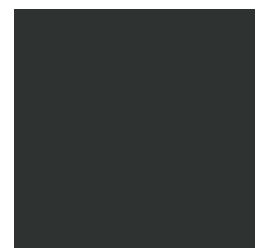
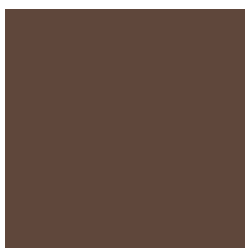
Solid Powder-Coat  
Coffee Satin



Solid Powder-Coat  
Cove Satin



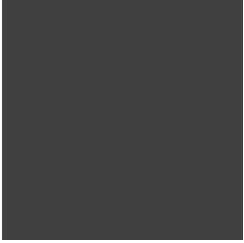
Solid Powder-Coat  
Monument Matt



# NEXUS ANGLED OTTOMAN

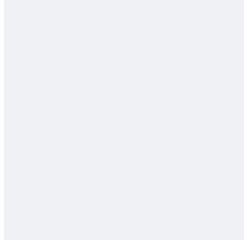
Seating » Ottomans

Solid Powder-Coat  
Medium Bronze  
Kinetic Flat



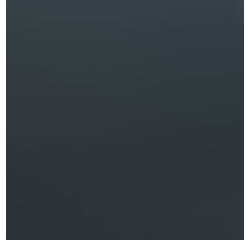
Textured Powder-Coat  
Textura  
Monument

Textured Powder-Coat  
Core Ten  
Textured Metallic



Textured Powder-Coat  
Textura  
White

Textured Powder-Coat  
Asteroid  
Textured Metallic



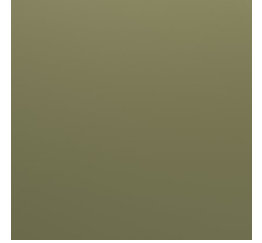
Signature Powder-Coat  
Deep Ocean  
Satin

Textured Powder-Coat  
Bass Textured  
Metallic

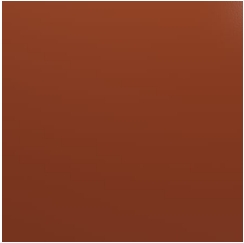


Signature Powder-Coat  
Wedgewood  
Satin

Textured Powder-Coat  
Textura  
Black



Signature Powder-Coat  
Mangrove  
Satin



Signature Powder-Coat  
Territory Red  
Satin



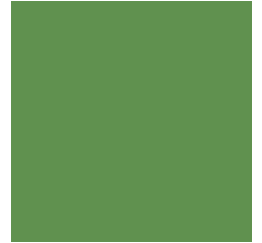
Signature Powder-Coat  
Claypot  
Satin



Signature Powder-Coat  
Paperbark  
Satin



Bold Powder-Coat  
Bondi Blue  
Gloss



Bold Powder-Coat  
Leaf  
Satin



Bold Powder-Coat  
Sensation  
Gloss



Bold Powder-Coat  
Lobster  
Satin



Bold Powder-Coat  
Moonlight  
Satin