

# AVENUE SEAT

Seating » Seats



Collections: **Avenue, Essentials**

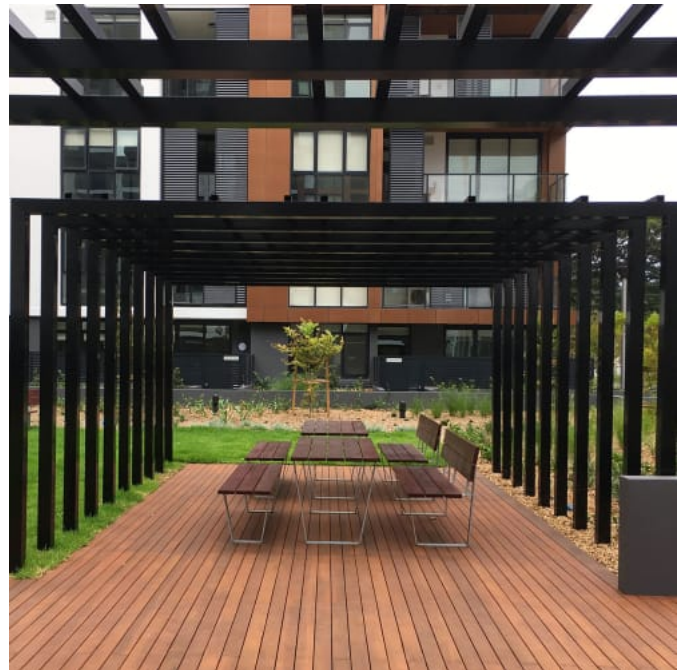
Designed By: **Botton + Gardiner**

Applications: **Indoor, Outdoor**



# AVENUE SEAT

Seating » Seats



# AVENUE SEAT

Seating » Seats

---



# AVENUE SEAT

Seating » Seats

Minimalist seating style with a backrest. Battens in hardwood, Duraslat™ XG, aluminium. Tapered steel frame in 27 powder-coat or galvanised finishes.

Description	<p>Rectangular battens and a tapered steel frame combine to deliver a minimalist seating design that takes its cues from 20th century industrial design. The functional feel and light appearance of the <b>Avenue Seat</b> complements and sits within most public spaces. Finishes include hardwood, Duraslat™ XG and 3 aluminium batten colours and 27 powder-coat finishes or a galvanised finish.</p> <p>Avenue Seat in select finishes is part of b+g's <b>Essential Collection</b> delivering favourable pricing and leadtimes.</p> <p>Select from Core powder coat colours and battens in hardwood blackbutt or Duraslat™ XG to qualify.</p>
How to Specify	<p>Select your length Select your batten finish Select your frame finish Select your fixing type</p>
Sustainability	<p><b>Certified Hardwood</b> All hardwood is sourced from sustainable forests certified by the Program for the Endorsement of Forest Certification (PEFC), the world's largest forestry certification system.</p> <p><b>Recycled Materials</b> We locally source our steel. It means we know it uses recycled content and is 100% recyclable.</p> <p>Duraslat™ XG is made from 90% of recycled hardwood fibres and reclaimed plastic materials, which reduces demand for virgin materials.</p> <p><b>Low Pollutants</b> Our powder-coating process doesn't emit Volatile Organic Compounds (VOCs) and has Environmental Product Declarations (EPDs).</p>

# AVENUE SEAT

Seating » Seats

Powder Coat	<p>Core <b>(Essentials Collection Finish)</b> White (satin), Black (satin), Charcoal (satin), Palladium Silver (satin), Matt Black (matt), Pearl White (gloss), Textura Monument (textured)</p> <p>Solid Coffee (satin), Cove (satin), Monument (matt), Medium Bronze Kinetic (flat)</p> <p>Textured Core Ten (textured metallic), Asteroid (textured metallic), Bass (textured metallic), Textura Black (textured), Textura White (textured)</p> <p>Signature Deep Ocean (satin), Wedgewood (satin), Mangrove (satin), Territory Red (matt), Claypot (satin), Paperbark (satin)</p> <p>Bold Bondi Blue (gloss), Leaf (satin), Sensation (gloss), Lobster (satin), Moonlight (satin)</p>
Dimensions	<p>Hardwood 1800mmW x 580mmD x 820mmH</p> <p>Duraslat™ XG 1600mmW x 580mmD x 820mmH</p> <p>Aluminium   Alugrain 2000mmW x 580mmD x 820mmH</p> <p>Seat height: 450mm</p>
Batten Type	<p>Hardwood Blackbutt <b>(Essentials Collection Finish)</b></p> <p>Duraslat™ XG <b>(Essentials Collection Finish)</b></p> <p>Aluminium   Clear Anodised, Alugrain Driftwood, Alugrain Spotted Gum</p>
Frame	<p>Powder-coated steel or hot-dip galvanised steel.</p> <p>Optional 316 stainless steel in matt textured frame finish available on request.</p>
Made In	Australia
Lead Time	<p>Essentials Collection Finishes 3-4 weeks</p> <p>All Other Finishes 4-6 weeks</p>
Assembly & Delivery	Shipped fully assembled on pallets.

# AVENUE SEAT

Seating » Seats

---

## Fixing Detail

Surface or sub-surface fixed by others. Anchors not included. Shims available for sub-surface fixing on request.

---

# AVENUE SEAT

Seating » Seats

---

## Care Instructions

### Hardwood

#### Cleaning

Remove any loose surface deposits with a soft bristled brush and wipe down with fresh water and a non-abrasive cloth.

#### Oiling

Oiling of timber will postpone natural greying, repel moisture, improve mould resistance, help maintain a smooth surface texture and enhance the grain and colour.

To maintain, lightly sand rough areas of timber and brush on one coat of timber decking oil every 6 months or as required.

### Duraslat™ XG

#### Cleaning

Simply wash down occasionally. Do not use high pressure cleaners.

### Powder-Coat

#### Cleaning

Carefully remove any loose surface deposits with a wet sponge or soft bristled brush.

Use a soft (non-abrasive) cloth or brush and a diluted solution of mild detergent and warm water.

Ensure surfaces are thoroughly rinsed with clean fresh water after cleaning to remove all residues.

Never use thinners, abrasive cleaning agents, alcohol-based, acid or alkali cleaning agents.

### Hot-Dip Galvanised Steel

For general cleaning of bulk contaminants such as dirt and the like, ordinary laundry soaps can be satisfactorily used.

For more stubborn or larger areas, the use of a low-pressure wash (eg. a gurney gun) with just pure water or in conjunction with proprietary cleaning materials, such as car wash or truck wash, can be effective. It is important that the steel be washed down with fresh water after cleaning.

The cleaning treatment of the galvanising should be conservative at first and then if the situation demands, the treatment can become steadily more aggressive. Also, wherever some form of mechanical abrasion or “scrubbing” is required, the use of a hard, plastic bristle brush is recommended. Steel bristle brushes are not to be used since they will cause discolouration.

Mechanical methods of cleaning zinc surfaces can cause aesthetic issues. The “cleaned” areas are likely to contrast with adjacent untreated surfaces and may take a significant period of time to weather to a uniform colour. If aesthetics is a large concern, it is advisable to first test the cleaning method in an inconspicuous area in case the aesthetic effect is unappealing.

# AVENUE SEAT

Seating » Seats

Warranty	5-year warranty. View the <a href="#">warranty</a> for more details.
Customisable	As this item is made to order locally, custom lengths are available on request.
Additional Comments	Hardwood is treated with a UV-resistant oil finish. As this item is made to order locally, custom lengths or armrests are available on request.



# AVENUE SEAT

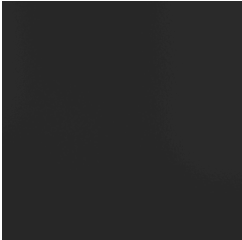
Seating » Seats

## Colour & Finish Options

### B+G Powder Coat - Core AU



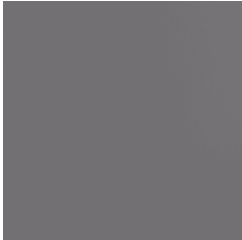
Black - Satin



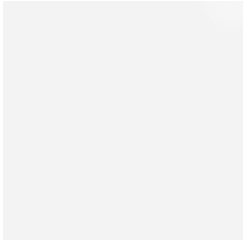
Charcoal - Satin



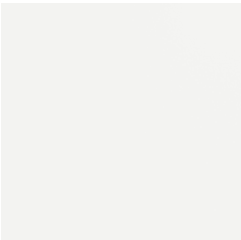
Matt Black - Matt



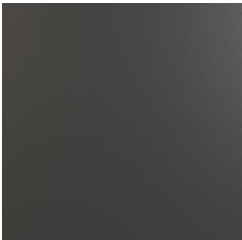
Palladium Silver - Satin



Pearl White - Gloss



White - Satin



Monument Texture

### B+G Powder Coat - Bold AU



Bondi Blue - Gloss



Leaf - Satin



Lobster - Satin



Moonlight - Satin



Sensation - Gloss

### B+G Powder Coat - Signature AU



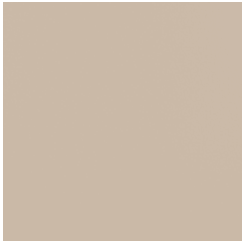
Claypot - Satin



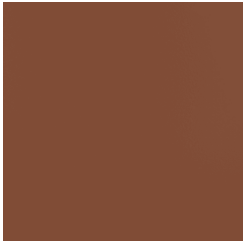
Deep Ocean - Satin



Mangrove - Satin



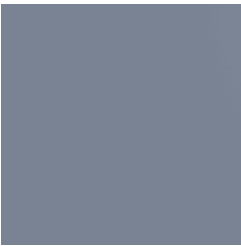
Paperbark - Satin



Territory Red - Matt

# AVENUE SEAT

Seating » Seats



Wedge wood - Satin

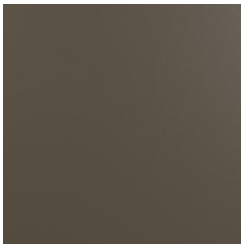
## B+G Powder Coat - Solid AU



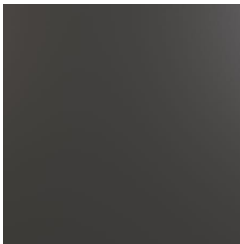
Coffee - Satin



Cove - Satin

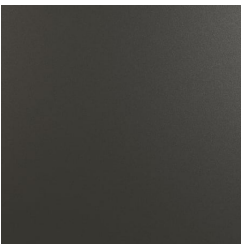


Medium Bronze  
Kinetic - Flat

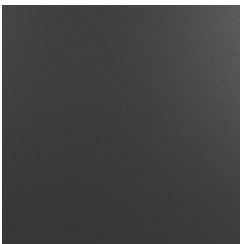


Monument - Matt

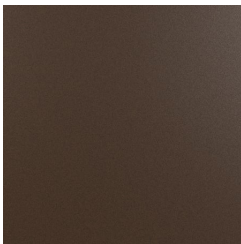
## B+G Powder Coat - Textured AU



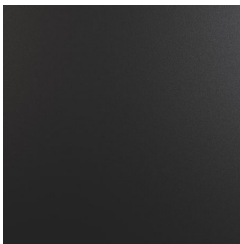
Asteroid



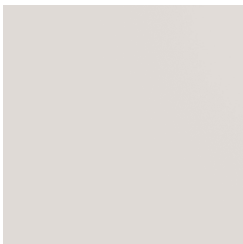
Bass



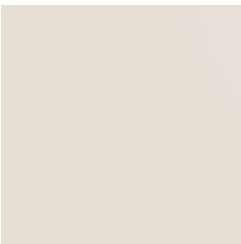
Core Ten



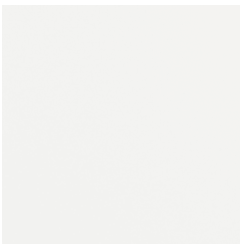
Textura Black



Textura Dune



Textura Primrose



Textura White