

SORRENTO OUTDOOR TABLE

Tables » Dining Height Tables



Collection: **Sorrento**

Designed by: **Botton + Gardiner**

SORRENTO OUTDOOR TABLE

Tables » Dining Height Tables



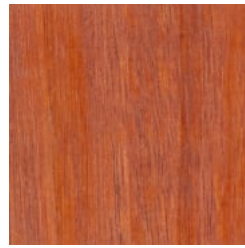
Hardwood Blackbutt
UV-Resistant Oil



Hardwood Spotted
Gum UV-Resistant
Oil



Hardwood Merbau
UV-Resistant Oil



Hardwood Mixed Red
UV-Resistant Oil
Clear



Hardwood Mixed Red
UV-Resistant Oil
Mahogany



Hardwood Mixed Red
UV-Resistant Oil
Ebony



Duraslat™ XG Ravine



Duraslat™ XG Cave



Duraslat™ XG Alcove



Duraslat™ XG
Boulder



Duraslat™ XG Dune



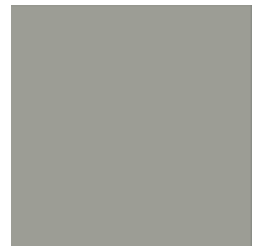
Core Powder-Coat
White Satin



Core Powder-Coat
Black Satin



Core Powder-Coat
Charcoal Satin



Core Powder-Coat
Palladium Silver Satin



Core Powder-Coat
Matt Black Matt



Core Powder-Coat
Pearl White Gloss



Solid Powder-Coat
Coffee Satin



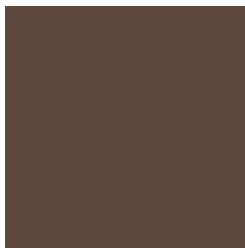
Solid Powder-Coat
Cove Satin



Solid Powder-Coat
Monument Matt



Solid Powder-Coat
Medium Bronze
Kinetic Flat



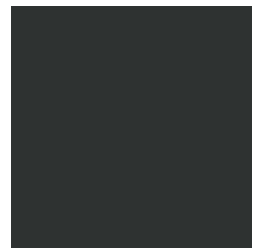
Textured Powder-
Coat Core Ten
Textured Metallic



Textured Powder-
Coat Asteroid
Textured Metallic



Textured Powder-
Coat Bass Textured
Metallic



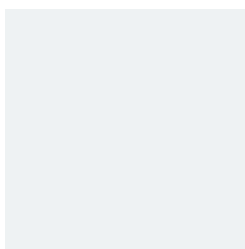
Textured Powder-
Coat Textura Black

SORRENTO OUTDOOR TABLE

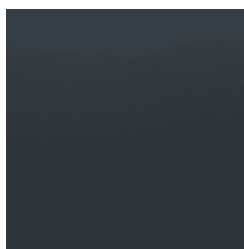
Tables » Dining Height Tables



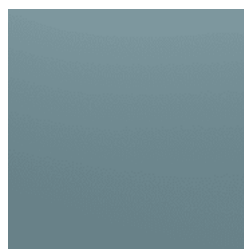
Textured Powder-Coat Textura Monument



Textured Powder-Coat Textura White



Signature Powder-Coat Deep Ocean Satin



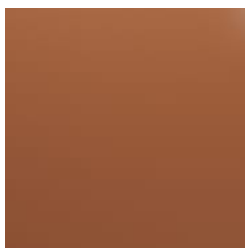
Signature Powder-Coat Wedgewood Satin



Signature Powder-Coat Mangrove Satin



Signature Powder-Coat Territory Red Satin



Signature Powder-Coat Claypot Satin



Signature Powder-Coat Paperbark Satin



Bold Powder-Coat Bondi Blue Gloss



Bold Powder-Coat Leaf Satin



Bold Powder-Coat Sensation Gloss



Bold Powder-Coat Lobster Satin



Bold Powder-Coat Moonlight Satin



SORRENTO OUTDOOR TABLE

Tables » Dining Height Tables

Modern table design with contrasting finishes, folded forms. Battens in 5 Duraslat™ XG colours and aluminium frame in 27 powder-coat finishes.

Description	Inspired by the Italian love of modern design, the Sorrento table is as much at home in the public spaces of Chicago as it is on boardwalks of the Mediterranean. The contrasting finishes, folded forms, and modular table design combine to create public spaces that draw the eye and challenge the status quo. The frame features a striking asymmetrical cut-out design that is visible from all directions adding to the unique visual aesthetics of the table. Finishes include battens in 5 Duraslat™ XG colours and an aluminium frame in 27 powder-coat finishes.
Made In	Australia
Dimensions	1800mmW x 725mmD x 740mmH
Batten Type	Duraslat™ XG Ravine, Cave, Alcove, Boulder, Dune
Frame	Powder-coated aluminium with the Windows perforated pattern.
Powder Coat	Core White (satin), Black (satin), Charcoal (satin), Palladium Silver (satin), Matt Black (matt), Pearl White (gloss) Solid Coffee (satin), Cove (satin), Monument (matt), Medium Bronze Kinetic (flat) Textured Core Ten (textured metallic), Asteroid (textured metallic), Bass (textured metallic), Textura Black (textured), Textura Monument (textured), Textura White (textured) Signature Deep Ocean (satin), Wedgewood (satin), Mangrove (satin), Territory Red (matt), Claypot (satin), Paperbark (satin) Bold Bondi Blue (gloss), Leaf (satin), Sensation (gloss), Lobster (satin), Moonlight (satin)

SORRENTO OUTDOOR TABLE

Tables » Dining Height Tables

Sustainability

Recycled Materials

We locally source our aluminium. It means we know it uses recycled content and is 100% recyclable.

Duraslat™ XG is made from 90% of recycled hardwood fibres and reclaimed plastic materials, which reduces demand for virgin materials.

Low Pollutants

Our powder-coating process doesn't emit Volatile Organic Compounds (VOCs) and has Environmental Product Declarations (EPDs).

Warranty

5-year warranty. View the [warranty](#) for more details.

Lead Time

6-8 weeks

Assembly & Delivery

Shipped fully assembled on pallets.

Fixing Detail

Surface fixed by others. Anchors not included.

How to Specify

Select your batten finish

Select your frame finish

Care Instructions

Duraslat™ XG

Simply wash down occasionally. Do not use high pressure cleaners.

Powder-Coat

Carefully remove any loose surface deposits with a wet sponge or soft bristled brush.

Use a soft (non-abrasive) cloth or brush and a diluted solution of mild detergent and warm water.

Ensure surfaces are thoroughly rinsed with clean fresh water after cleaning to remove all residues.

Never use thinners, abrasive cleaning agents, alcohol-based, acid or alkali cleaning agents.
