

SORRENTO INDOOR BACK-TO-BACK SEAT

Seating » Seats



Collections: **Sorrento**

Designed By: **Botton + Gardiner**

Applications: **Indoor**

SORRENTO INDOOR BACK-TO-BACK SEAT

Seating » Seats



SORRENTO INDOOR BACK-TO-BACK SEAT

Seating » Seats

Modular indoor seating with contrasting finishes and folded forms. Hardwood battens, optional cushion, and aluminium frame in 27 powder-coat finishes.

Description	Inspired by the Italian love of modern design, the Sorrento back-to-back seat is ideal for a variety of indoor spaces. The contrasting finishes, folded forms, and modular back-to-back seat design combine to create public spaces that draw the eye and challenge the status quo. A striking asymmetrical cut-out design on the backrest is visible from all directions adding to the unique visual aesthetics of the back-to-back seat. Finishes include hardwood battens, an optional fixed cushion and an aluminium frame in 27 powder-coat finishes.
How to Specify	Select your batten finish Select your backrest finish Select your frame colour Select your optional upholstery fabric for fixed cushion
Sustainability	<p>Certified Hardwood All hardwood is sourced from sustainable forests certified by the Program for the Endorsement of Forest Certification (PEFC), the world's largest forestry certification system.</p> <p>Recycled Materials We locally source our aluminium. It means we know it uses recycled content and is 100% recyclable.</p> <p>Duraslat™ XG is made from 90% of recycled hardwood fibres and reclaimed plastic materials, which reduces demand for virgin materials.</p> <p>Low Pollutants Our powder-coating process doesn't emit Volatile Organic Compounds (VOCs) and has Environmental Product Declarations (EPDs).</p>

SORRENTO INDOOR BACK-TO-BACK SEAT

Seating » Seats

Powder Coat	<p>Core White (satin), Black (satin), Charcoal (satin), Palladium Silver (satin), Matt Black (matt), Pearl White (gloss)</p> <p>Solid Coffee (satin), Cove (satin), Monument (matt), Medium Bronze Kinetic (flat)</p> <p>Textured Core Ten (textured metallic), Asteroid (textured metallic), Bass (textured metallic), Textura Black (textured), Textura Monument (textured), Textura White (textured)</p> <p>Signature Deep Ocean (satin), Wedgewood (satin), Mangrove (satin), Territory Red (matt), Claypot (satin), Paperbark (satin)</p> <p>Bold Bondi Blue (gloss), Leaf (satin), Sensation (gloss), Lobster (satin), Moonlight (satin)</p>
Dimensions	<p>2400mmW x 1230mmD x 745mmH</p> <p>Seat height: 445mm + optional fixed cushion: 40mm</p>
Fabric Amount Required	<p>Fabric required: 3.2m based on one plain fabric, 137cm wide.</p>
Batten Type	<p>Hardwood</p> <p>Duraslat™ XG</p>
Frame	<p>Powder-coated aluminium with backrest that features the Windows perforation pattern on both sides.</p>
Made In	<p>Australia</p>
Lead Time	<p>6-8 weeks</p>
Assembly & Delivery	<p>Shipped fully assembled on pallets.</p>
Fixing Detail	<p>Loose or surface fixed by others. Anchors not included.</p>

SORRENTO INDOOR BACK-TO-BACK SEAT

Seating » Seats

Care Instructions

Baresque Upholstery Fabrics

Use a cloth with any of the following in preferred order of use:

1. Clear warm water
2. Mild solution of liquid detergent and warm water
3. Isopropyl Alcohol (rubbing alcohol)

Remove any detergent with a clean, damp cloth. Gently pat dry.

For more difficult stains, dampen a soft white cloth with a solution of household bleach (mix 10% bleach with 90% water). Rub gently. Rinse with a water dampened cloth to remove bleach concentration.

Do not use solvent based or concentrated abrasive cleaning agents, lacquer thinners or nail polish remover as these may cause discolouration over a period of time.

Always test in an inconspicuous area first.

Multipurpose Compact Laminates | Laminex®

A damp cloth will remove spills and greasy spots. Rub with a clean dry cloth to bring back brightness. Occasionally clean with mild dishwashing detergent. To remove heavy build-up of dirt use cleaners such as Mr Muscle, Windex, or Ajax Spray n Wipe spray cleaners.

Do not use strong acidic, alkaline cleaners or bleach for normal cleaning as these might etch the surface.

Solid Surfaces | Corian®

Generally, when caring for Corian always start with a simple clean eg. using a damp sponge or cloth. Avoid using abrasive scouring pads for routine cleaning. Rinse clean.

For a deep clean of stubborn stains, a more thorough clean and refresh using a mild abrasive cleanser is recommended like Gumption, JIF Cream Cleanser or Ajax cream or powder cleanser. Firmly wipe with a damp cloth using a wide circular motion. Always finish by rinsing and wiping your surface with a damp cloth or sponge.

Powder-Coat Finishes

Carefully remove any loose surface deposits with a wet sponge or soft bristled brush.

Use a soft (non-abrasive) cloth or brush and a diluted solution of mild detergent and warm water.

Ensure surfaces are thoroughly rinsed with clean fresh water after cleaning to remove all residues.

Never use thinners, abrasive cleaning agents, alcohol-based, acid or alkali cleaning agents.

Warranty

5-year warranty, 2-year warranty with upholstered fixed cushion. View the [warranty](#) for more details.

SORRENTO INDOOR BACK-TO-BACK SEAT

Seating » Seats

Additional Comments

Optional fixed upholstered half cushion. Select a fabric from [Baresque](#), specify a fabric or supply your own.

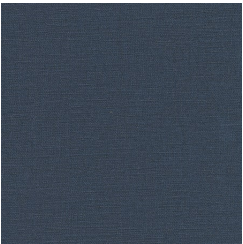
Fabric required: 3.2m based on one plain fabric, 137cm wide.

The Sorrento backrest is perforated both sides so the feature cut-outs are visible from all directions. To ensure easy cleaning, there is an open space below the backrest allowing debris pushed into the cut-outs to fall to the ground and be swept up. This is a nifty feature for shopping centres where bored patrons might be tempted to push wrappers into the gaps.

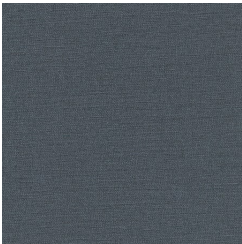
SORRENTO INDOOR BACK-TO-BACK SEAT

Seating » Seats

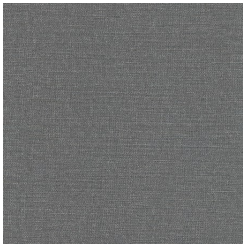
Colour & Finish Options



Baresque Meru
Upholstery Fabric
Lake



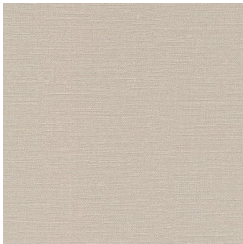
Baresque Meru
Upholstery Fabric
Abyss



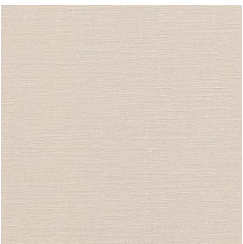
Baresque Meru
Upholstery Fabric
Charcoal



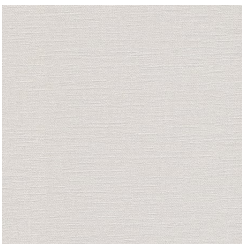
Baresque Meru
Upholstery Fabric
Root



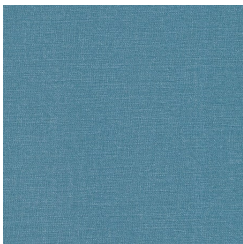
Baresque Meru
Upholstery Fabric
Nickel



Baresque Meru
Upholstery Fabric
Vellum



Baresque Meru
Upholstery Fabric
Chablis



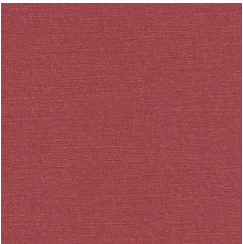
Baresque Meru
Upholstery Fabric
Caribbean



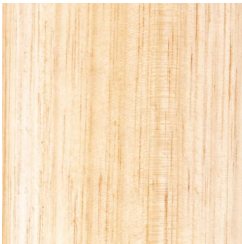
Baresque Meru
Upholstery Fabric
Emerald



Baresque Meru
Upholstery Fabric
Nectar



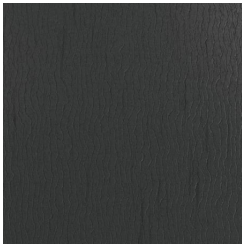
Baresque Meru
Upholstery Fabric
Fiesta



Hardwood Vic Ash
UV-Resistant
Lacquered Internal
Use Only



Duraslat™ XG Ravine



Duraslat™ XG Cave



Duraslat™ XG Alcove

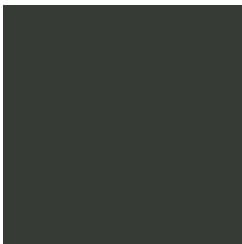


Duraslat™ XG
Boulder



Duraslat™ XG Dune

Core Powder-Coat
White Satin



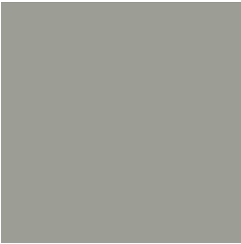
Core Powder-Coat
Black Satin



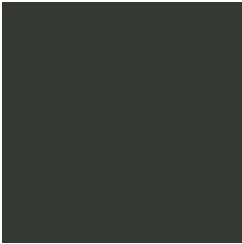
Core Powder-Coat
Charcoal Satin

SORRENTO INDOOR BACK-TO-BACK SEAT

Seating » Seats



Core Powder-Coat
Palladium Silver Satin



Core Powder-Coat
Matt Black Matt



Core Powder-Coat
Pearl White Gloss



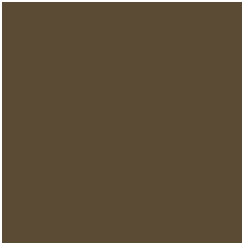
Solid Powder-Coat
Coffee Satin



Solid Powder-Coat
Cove Satin



Solid Powder-Coat
Monument Matt



Solid Powder-Coat
Medium Bronze
Kinetic Flat



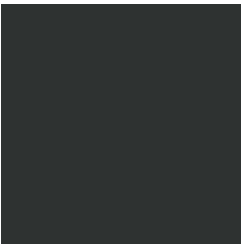
Textured Powder-
Coat Core Ten
Textured Metallic



Textured Powder-
Coat Asteroid
Textured Metallic



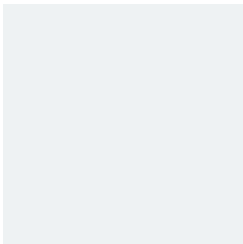
Textured Powder-
Coat Bass Textured
Metallic



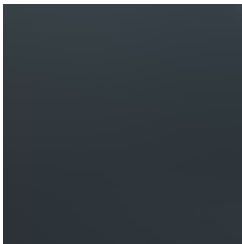
Textured Powder-
Coat Textura Black



Textured Powder-
Coat Textura
Monument



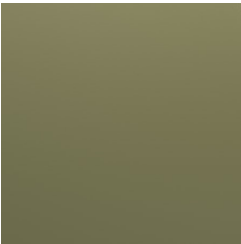
Textured Powder-
Coat Textura White



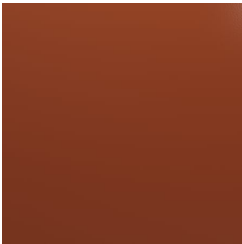
Signature Powder-
Coat Deep Ocean
Satin



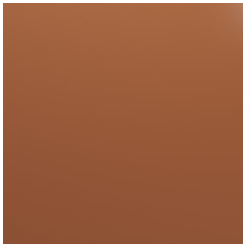
Signature Powder-
Coat Wedgewood
Satin



Signature Powder-
Coat Mangrove Satin



Signature Powder-
Coat Territory Red
Satin



Signature Powder-
Coat Claypot Satin



Signature Powder-
Coat Paperbark Satin



Bold Powder-Coat
Bondi Blue Gloss



Bold Powder-Coat
Leaf Satin



Bold Powder-Coat
Sensation Gloss



Bold Powder-Coat
Lobster Satin



Bold Powder-Coat
Moonlight Satin

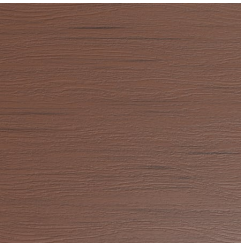
SORRENTO INDOOR BACK-TO-BACK SEAT

Seating » Seats

B+G Duraslat XG AU



Alcove



Boulder



Cave



Ravine

B+G Powder Coat - Bold AU



Bondi Blue - Gloss



Leaf - Satin



Lobster - Satin

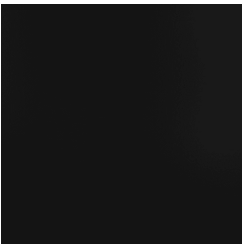


Moonlight - Satin



Sensation - Gloss

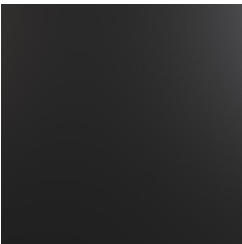
B+G Powder Coat - Core AU



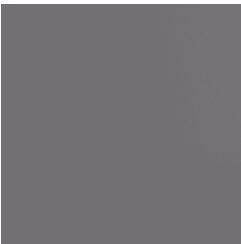
Black - Satin



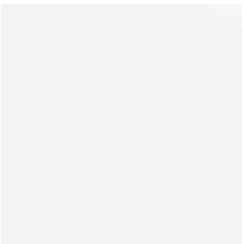
Charcoal - Satin



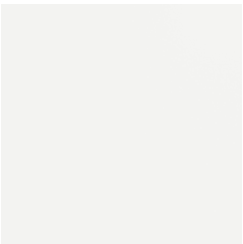
Matt Black - Matt



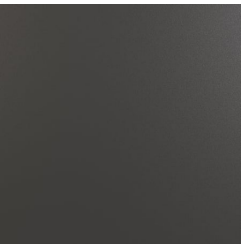
Palladium Silver - Satin



Pearl White - Gloss



White - Satin



Monument Texture

B+G Powder Coat - Signature AU

SORRENTO INDOOR BACK-TO-BACK SEAT

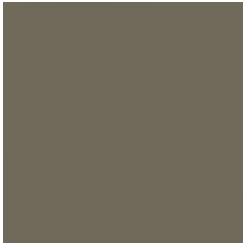
Seating » Seats



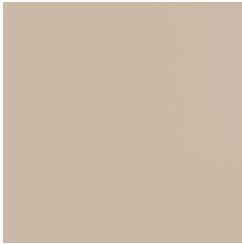
Claypot - Satin



Deep Ocean - Satin



Mangrove - Satin



Paperbark - Satin



Territory Red - Matt

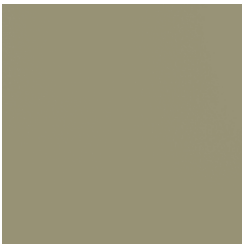


Wedgewood - Satin

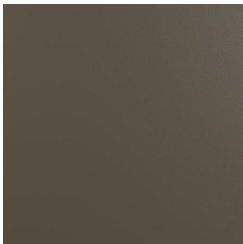
B+G Powder Coat - Solid AU



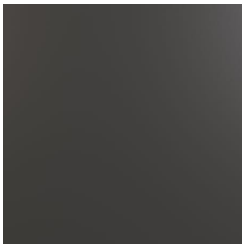
Coffee - Satin



Cove - Satin

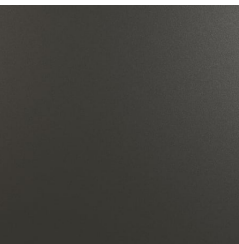


Medium Bronze
Kinetic - Flat

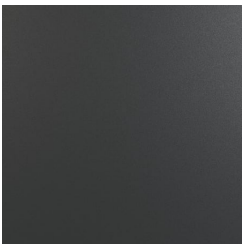


Monument - Matt

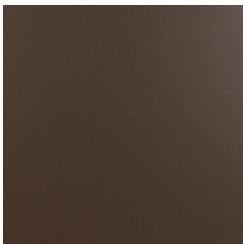
B+G Powder Coat - Textured AU



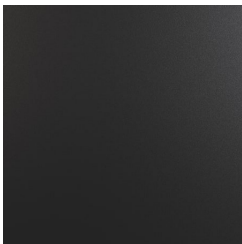
Asteroid



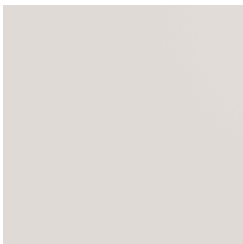
Bass



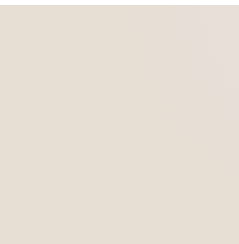
Core Ten



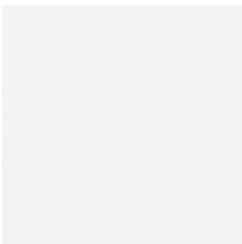
Textura Black



Textura Dune



Textura Primrose



Textura White