

URBAN TRI TABLE

Tables » Dining Height Tables



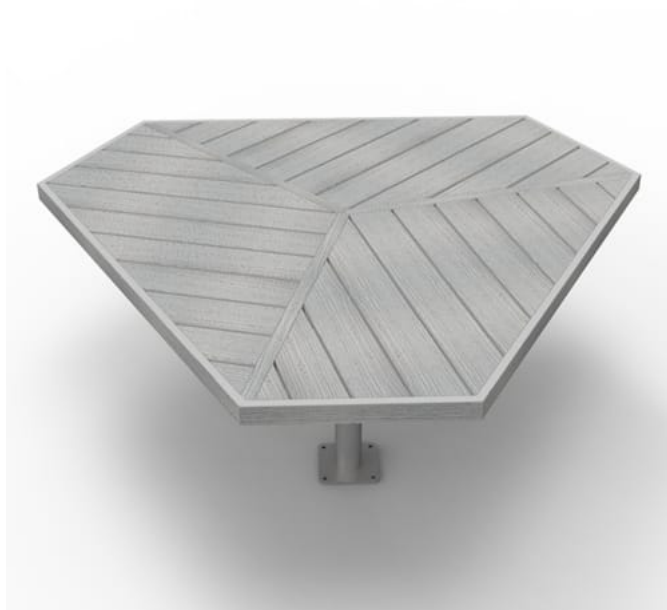
Collections: **Urban**

Designed By: **Botton + Gardiner**

Applications: **Indoor, Outdoor**

URBAN TRI TABLE

Tables » Dining Height Tables



URBAN TRI TABLE

Tables » Dining Height Tables

Unique tri table. Irregular hexagon shape. Hardwood, Duraslat™ XG battens with an elegant cast aluminium frame in powder-coat finishes or polished.

Description

Referencing Paris's famous wrought ironwork, curved cast aluminium framing is complemented by muscular hardwood or Duraslat™ XG surfaces to offer a timeless and unique Urban tri table. Featuring a unique irregular hexagon shape and striking slatted top design, the table creates a focal gathering point and is ideal for large groups. Finishes include hardwood or Duraslat™ XG colours and powder-coat finishes or a polished aluminium finish. Urban is close to our heart; a classic, elegant, and highly functional collection that works in almost any public space.

How to Specify

Select your batten finish
Select your frame finish
Select your fixing type

Sustainability

Certified Hardwood
All hardwood is sourced from sustainable forests certified by the Program for the Endorsement of Forest Certification (PEFC), the world's largest forestry certification system.

Recycled Materials
We locally source our aluminium. It means we know it uses recycled content and is 100% recyclable.

Duraslat™ XG is made from 90% of recycled hardwood fibres and reclaimed plastic materials, which reduces demand for virgin materials.

Low Pollutants
Our powder-coating process doesn't emit Volatile Organic Compounds (VOCs) and has Environmental Product Declarations (EPDs).

Powder Coat

Core
Solid
Textured
Signature
Bold

Dimensions

Hardwood
O/A 2130mmW x 1830mmD x 750mmH

Duraslat™ XG
O/A 2130mmW x 1830mmD x 750mmH

Edge length - 1500mmW
Flattened corner length - 630mm

URBAN TRI TABLE

Tables » Dining Height Tables

Batten Type	Hardwood Duraslat™ XG
Frame	Cast aluminium in a powder-coat or polished finish Post: powder-coated galvanised steel, colour to match frame specification or silver to coordinate with the polished aluminium finish
Weight	130kg
Made In	Australia
Lead Time	6-8 weeks
Assembly & Delivery	Flat pack assembly. Assembled on site. Some simple assembly is required to attach the legs prior to installation. Due to the weight of this item (130kg) the top will be delivered on a pallet with the legs separate. A forklift or lifting equipment (by others) is required to take delivery.
Fixing Detail	Post fixed by others - surface, sub-surface or core-holed. Anchors not included.

URBAN TRI TABLE

Tables » Dining Height Tables

Care Instructions

Hardwood

Cleaning

Remove any loose surface deposits with a soft bristled brush and wipe down with fresh water and a non-abrasive cloth.

Oiling

Oiling of timber will postpone natural greying, repel moisture, improve mould resistance, help maintain a smooth surface texture and enhance the grain and colour.

To maintain, lightly sand rough areas of timber and brush on one coat of timber decking oil every 6 months or as required.

Powder-Coat

Cleaning

Carefully remove any loose surface deposits with a wet sponge or soft bristled brush.

Use a soft (non-abrasive) cloth or brush and a diluted solution of mild detergent and warm water.

Ensure surfaces are thoroughly rinsed with clean fresh water after cleaning to remove all residues.

Never use thinners, abrasive cleaning agents, alcohol-based, acid or alkali cleaning agents.

Warranty

5-year warranty. View the [warranty](#) for more details.

Additional Comments

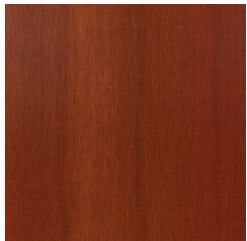
Opt to add umbrella hole + flange or outdoor power and GPOs to make your settings flexible outdoor working zones, ideal for universities and schools.

URBAN TRI TABLE

Tables » Dining Height Tables

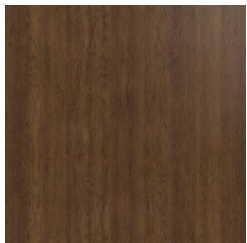
Colour & Finish Options

B+G Mixed Reds AU



Mixed Reds

B+G Spotted Gum AU



Spotted Gum

B+G Duraslat XG AU



Alcove



Boulder



Cave



Ravine

B+G Powder Coat - Bold AU



Bondi Blue - Gloss



Leaf - Satin



Lobster - Satin



Moonlight - Satin

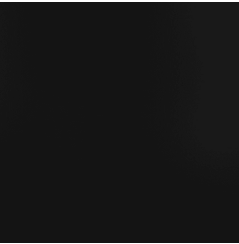


Sensation - Gloss

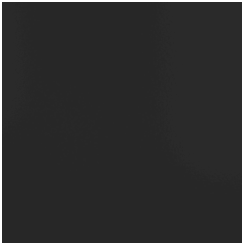
B+G Powder Coat - Core AU

URBAN TRI TABLE

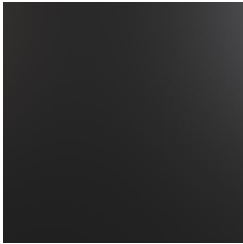
Tables » Dining Height Tables



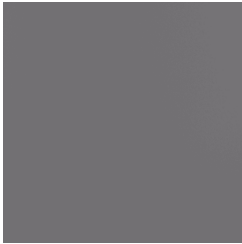
Black - Satin



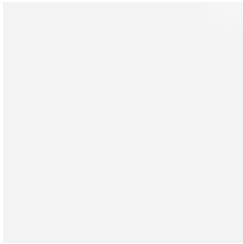
Charcoal - Satin



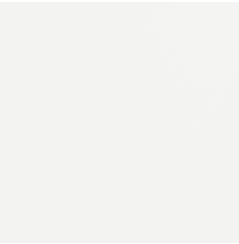
Matt Black - Matt



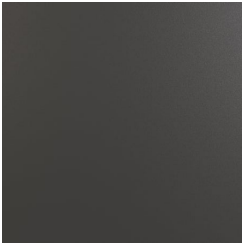
Palladium Silver - Satin



Pearl White - Gloss



White - Satin



Monument Texture

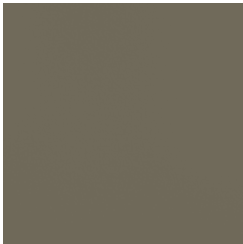
B+G Powder Coat - Signature AU



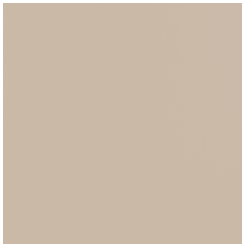
Claypot - Satin



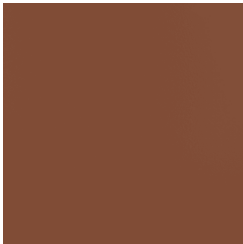
Deep Ocean - Satin



Mangrove - Satin



Paperbark - Satin



Territory Red - Matt

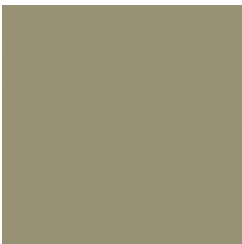


Wedgewood - Satin

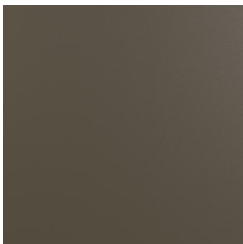
B+G Powder Coat - Solid AU



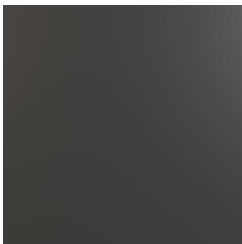
Coffee - Satin



Cove - Satin



Medium Bronze Kinetic - Flat

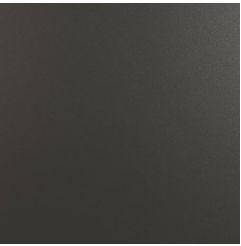


Monument - Matt

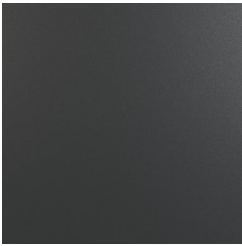
URBAN TRI TABLE

Tables » Dining Height Tables

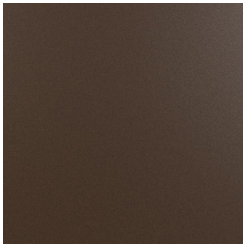
B+G Powder Coat - Textured AU



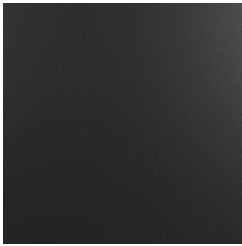
Asteroid



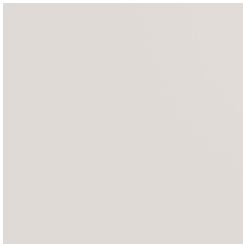
Bass



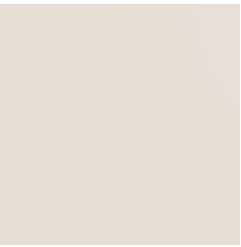
Core Ten



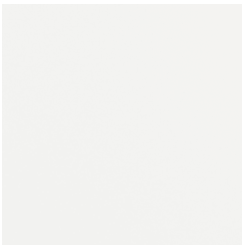
Textura Black



Textura Dune



Textura Primrose



Textura White