

# URBAN CURVED CANTILEVERED BENCH

Seating » Benches

---



Collection: **Urban**

Designed by: **Botton + Gardiner**

# URBAN CURVED CANTILEVERED BENCH

Seating » Benches



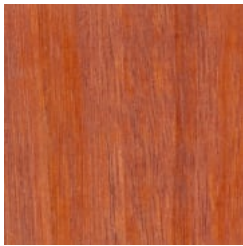
Hardwood Blackbutt  
UV-Resistant Oil



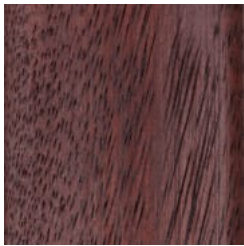
Hardwood Spotted  
Gum UV-Resistant  
Oil



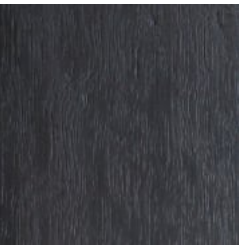
Hardwood Merbau  
UV-Resistant Oil



Hardwood Mixed Red  
UV-Resistant Oil  
Clear



Hardwood Mixed Red  
UV-Resistant Oil  
Mahogany



Hardwood Mixed Red  
UV-Resistant Oil  
Ebony



Duraslat™ XG Ravine



Duraslat™ XG Cave



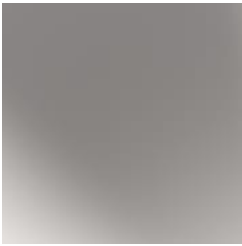
Duraslat™ XG Alcove



Duraslat™ XG  
Boulder



Duraslat™ XG Dune



Natural Aluminium



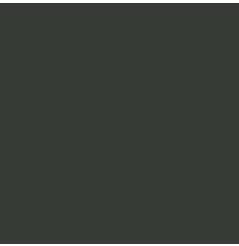
Alugrain Driftwood



Alugrain Spotted  
Gum



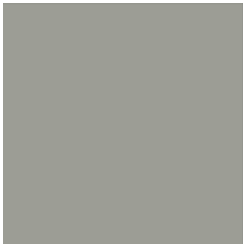
Core Powder-Coat  
White Satin



Core Powder-Coat  
Black Satin



Core Powder-Coat  
Charcoal Satin



Core Powder-Coat  
Palladium Silver Satin



Core Powder-Coat  
Matt Black Matt



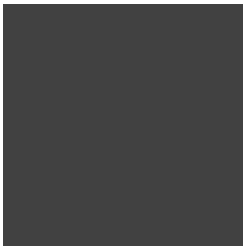
Core Powder-Coat  
Pearl White Gloss



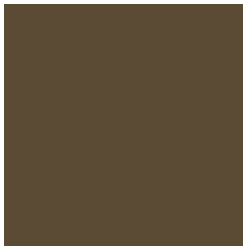
Solid Powder-Coat  
Coffee Satin



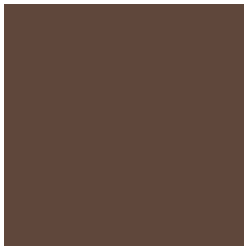
Solid Powder-Coat  
Cove Satin



Solid Powder-Coat  
Monument Matt



Solid Powder-Coat  
Medium Bronze  
Kinetic Flat



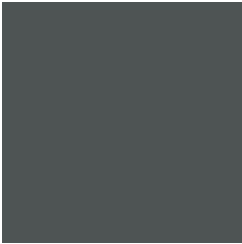
Textured Powder-  
Coat Core Ten  
Textured Metallic

# URBAN CURVED CANTILEVERED BENCH

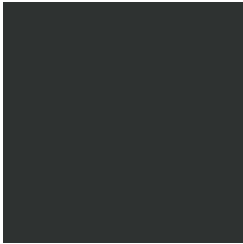
Seating » Benches



Textured Powder-Coat Asteroid  
Textured Metallic



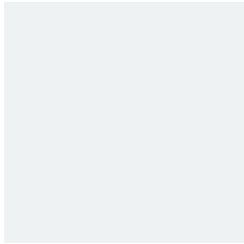
Textured Powder-Coat Bass Textured  
Metallic



Textured Powder-Coat Textura Black



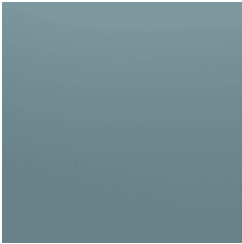
Textured Powder-Coat Textura  
Monument



Textured Powder-Coat Textura White



Signature Powder-Coat Deep Ocean  
Satin



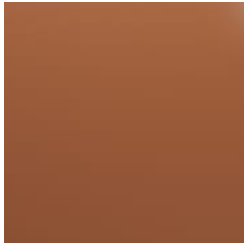
Signature Powder-Coat Wedgewood  
Satin



Signature Powder-Coat Mangrove Satin



Signature Powder-Coat Territory Red  
Satin



Signature Powder-Coat Claypot Satin



Signature Powder-Coat Paperbark Satin



Bold Powder-Coat Bondi Blue Gloss



Bold Powder-Coat Leaf Satin



Bold Powder-Coat Sensation Gloss



Bold Powder-Coat Lobster Satin



Bold Powder-Coat Moonlight Satin

# URBAN CURVED CANTILEVERED BENCH

Seating » Benches

---



Curved wall-mounted seating. Hardwood, Duraslat™ XG, aluminium battens with an elegant cast aluminium frame in 27 powder-coat finishes or polished.

---

## Description

Referencing Paris's famous wrought ironwork, curved cast aluminium framing is complemented by muscular hardwood, Duraslat™ XG surfaces or aluminium surfaces to offer a timeless Urban curved cantilevered bench. The design removes the visual clutter of the legs for a more contemporary look and is ideal for seating off structural walls around plant beds and along walls. Finishes include 5 hardwood or 5 Duraslat™ XG colours and 27 powder-coat finishes or a polished aluminium finish. Urban is close to our heart; a classic, elegant, and highly functional collection that works in almost any public space.

---

Made In

Australia

---

# URBAN CURVED CANTILEVERED BENCH

Seating » Benches

|             |   |
|-------------|---|
| Dimensions  | <p>Standard Arc Lengths</p> <p>Hardwood</p> <p>1800mm, 2000mm, 2400mm, 3000mm</p> <p>Duraslat™ XG</p> <p>1800mm, 2000mm, 2400mm, 3000mm</p> <p>Aluminium   Alugrain</p> <p>2000mm, 2500mm, 3000mm</p> <p>Seat height: 440mm</p> <p>Seat depth: 420mm</p> <p>**Radius as specified - minimum outer radius possible is 1000mm</p>   |
| Batten Type | <p>Hardwood</p> <p>Blackbutt, Spotted Gum, Mixed Red - Pine, Mahogany, Ebony Oil</p> <p>Duraslat™ XG</p> <p>Ravine, Cave, Alcove, Boulder, Dune</p> <p>Aluminium   Alugrain</p> <p>Clear Anodised, Driftwood, Spotted Gum</p>   |
| Frame       | <p>Cast aluminium in a powder-coat or polished finish</p>   |
| Powder Coat | <p>Core</p> <p>White (satin), Black (satin), Charcoal (satin), Palladium Silver (satin), Matt Black (matt), Pearl White (gloss)</p> <p>Solid</p> <p>Coffee (satin), Cove (satin), Monument (matt), Medium Bronze Kinetic (flat)</p> <p>Textured</p> <p>Core Ten (textured metallic), Asteroid (textured metallic), Bass (textured metallic), Textura Black (textured), Textura Monument (textured), Textura White (textured)</p> <p>Signature</p> <p>Deep Ocean (satin), Wedgewood (satin), Mangrove (satin), Territory Red (matt), Claypot (satin), Paperbark (satin)</p> <p>Bold</p> <p>Bondi Blue (gloss), Leaf (satin), Sensation (gloss), Lobster (satin), Moonlight (satin)</p> |

# URBAN CURVED CANTILEVERED BENCH

Seating » Benches

|                     |   |
|---------------------|---|
| Sustainability      | <p>Certified Hardwood<br/>All hardwood is sourced from sustainable forests certified by the Program for the Endorsement of Forest Certification (PEFC), the world's largest forestry certification system.</p> <p>Recycled Materials<br/>We locally source our aluminium. It means we know it uses recycled content and is 100% recyclable.</p> <p>Duraslat™ XG is made from 90% of recycled hardwood fibres and reclaimed plastic materials, which reduces demand for virgin materials.</p> <p>Low Pollutants<br/>Our powder-coating process doesn't emit Volatile Organic Compounds (VOCs) and has Environmental Product Declarations (EPDs).</p> |
| Warranty            | 5-year warranty. View the <a href="#">warranty</a> for more details.  |
| Lead Time           | 4-6 weeks   |
| Assembly & Delivery | Shipped fully assembled on pallets.   |
| Fixing Detail       | Fixed to a structural wall by others. Anchors not included.   |
| How to Specify      | <p>Select your arc length</p> <p>Specify your radius</p> <p>Select your batten finish</p> <p>Select your frame finish</p> <p>Select your fixing type</p>  |

# URBAN CURVED CANTILEVERED BENCH

Seating » Benches

---

## Care Instructions

### Hardwood

#### Cleaning

Remove any loose surface deposits with a soft bristled brush and wipe down with fresh water and a non-abrasive cloth.

#### Oiling

Oiling of timber will postpone natural greying, repel moisture, improve mould resistance, help maintain a smooth surface texture and enhance the grain and colour.

To maintain, lightly sand rough areas of timber and brush on one coat of timber decking oil every 6 months or as required.

### Duraslat™ XG

#### Cleaning

Simply wash down occasionally. Do not use high pressure cleaners.

### Powder-Coat

#### Cleaning

Carefully remove any loose surface deposits with a wet sponge or soft bristled brush.

Use a soft (non-abrasive) cloth or brush and a diluted solution of mild detergent and warm water.

Ensure surfaces are thoroughly rinsed with clean fresh water after cleaning to remove all residues.

Never use thinners, abrasive cleaning agents, alcohol-based, acid or alkali cleaning agents.

---

## Additional Comments

The Urban cantilevered curved bench is made to order to your specified radius to ensure a perfect project fit.

As this item is made to order locally, custom lengths are available on request.

Optional skate stoppers available to discourage skater damage to your furniture.

---