

URBAN PLINTH SEAT AS1428.2

Seating » Seats



Collection: **Urban**

Designed by: **Botton + Gardiner**

URBAN PLINTH SEAT AS1428.2

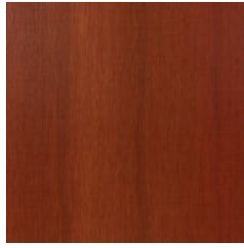
Seating » Seats



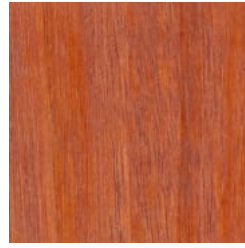
Hardwood Blackbutt
UV-Resistant Oil



Hardwood Spotted
Gum UV-Resistant
Oil



Hardwood Merbau
UV-Resistant Oil



Hardwood Mixed Red
UV-Resistant Oil
Clear



Hardwood Mixed Red
UV-Resistant Oil
Mahogany



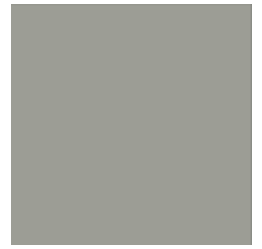
Hardwood Mixed Red
UV-Resistant Oil
Ebony



Core Powder-Coat
Black Satin



Core Powder-Coat
Charcoal Satin



Core Powder-Coat
Palladium Silver Satin



Core Powder-Coat
White Satin



Core Powder-Coat
Matt Black Matt



Solid Powder-Coat
Coffee Satin



Solid Powder-Coat
Cove Satin



Solid Powder-Coat
Monument Matt



Core Powder-Coat
Pearl White Gloss



Solid Powder-Coat
Medium Bronze
Kinetic Flat



Textured Powder-
Coat Asteroid
Textured Metallic



Textured Powder-
Coat Bass Textured
Metallic



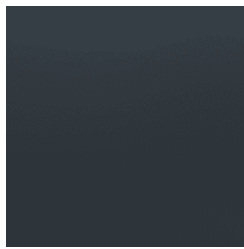
Textured Powder-
Coat Textura Black



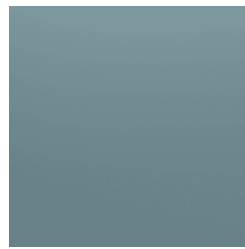
Textured Powder-
Coat Core Ten
Textured Metallic



Textured Powder-
Coat Textura



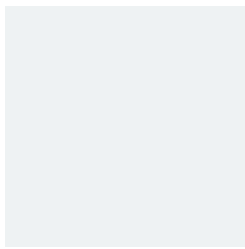
Signature Powder-
Coat Deep Ocean



Signature Powder-
Coat Wedgewood



Signature Powder-
Coat Mangrove Satin

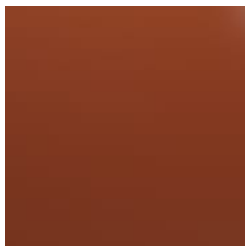


Textured Powder-
Coat Textura White

URBAN PLINTH SEAT AS1428.2

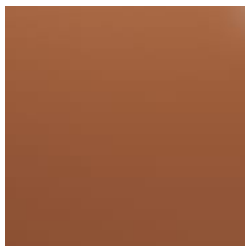
Seating » Seats

Monument



Signature Powder-Coat Territory Red Satin

Satin



Signature Powder-Coat Claypot Satin



Signature Powder-Coat Paperbark Satin

Satin



Bold Powder-Coat Bondi Blue Gloss



Bold Powder-Coat Leaf Satin



Bold Powder-Coat Sensation Gloss



Bold Powder-Coat Lobster Satin



Bold Powder-Coat Moonlight Satin

URBAN PLINTH SEAT AS1428.2

Seating » Seats

Timeless plinth seating AS1428.2. Hardwood battens with an elegant cast aluminium frame in 27 powder-coat finishes or polished.

● AS1428.2

Description Referencing Paris's famous wrought ironwork, curved cast aluminium framing is complemented by muscular hardwood, to offer a timeless Urban plinth seat AS1428.2. With the new accessible armrests and correct installation, the design complies with AS1428.2 Accessibility guidelines for projects meeting DDA requirements making it ideal for council parks, shopping centres, outdoor university areas and aged care villages. Finishes include 5 hardwood colours and 27 powder-coat finishes or a polished aluminium finish. Urban is close to our heart; a classic, elegant, and highly functional collection that works in almost any public space.

Made In Australia

Dimensions Hardwood
1800mmW x 580mmD x 750mmH

Existing plinth wall by others - recommended height 250mm for a seat height of 440mm. Accessible arm height: 670mm

Batten Type Hardwood
Blackbutt, Spotted Gum, Mixed Red -
Pine, Mahogany, Ebony Oil

Frame Cast aluminium in a powder-coat or polished finish

Accessible armrest: cast aluminium in a powder-coat or polished finish

URBAN PLINTH SEAT AS1428.2

Seating » Seats

Powder Coat

Core

White (satin), Black (satin), Charcoal (satin), Palladium Silver (satin), Matt Black (matt), Pearl White (gloss)

Solid

Coffee (satin), Cove (satin), Monument (matt), Medium Bronze Kinetic (flat)

Textured

Core Ten (textured metallic), Asteroid (textured metallic), Bass (textured metallic), Textura Black (textured), Textura Monument (textured), Textura White (textured)

Signature

Deep Ocean (satin), Wedgewood (satin), Mangrove (satin), Territory Red (matt), Claypot (satin), Paperbark (satin)

Bold

Bondi Blue (gloss), Leaf (satin), Sensation (gloss), Lobster (satin), Moonlight (satin)

Sustainability

Certified Hardwood

All hardwood is sourced from sustainable forests certified by the Program for the Endorsement of Forest Certification (PEFC), the world's largest forestry certification system.

Recycled Materials

We locally source our aluminium. It means we know it uses recycled content and is 100% recyclable.

Duraslat™ XG is made from 90% of recycled hardwood fibres and reclaimed plastic materials, which reduces demand for virgin materials.

Low Pollutants

Our powder-coating process doesn't emit Volatile Organic Compounds (VOCs) and has Environmental Product Declarations (EPDs).

Warranty

5-year warranty. View the [warranty](#) for more details.

Lead Time

4-6 weeks

Assembly & Delivery

Shipped fully assembled on pallets.

Fixing Detail

To meet AS1428.2 this item needs to be installed to the correct seat height: 400-450mm with the plinth set back min. 150mm from the seat edge

Post fixed by others - surface fixed or core-holed. Anchors not included.

URBAN PLINTH SEAT AS1428.2

Seating » Seats

How to Specify

Select your batten finish
Select your frame finish
Select your armrest finish
Select your fixing type

Care Instructions

Hardwood

Cleaning

Remove any loose surface deposits with a soft bristled brush and wipe down with fresh water and a non-abrasive cloth.

Oiling

Oiling of timber will postpone natural greying, repel moisture, improve mould resistance, help maintain a smooth surface texture and enhance the grain and colour.

To maintain, lightly sand rough areas of timber and brush on one coat of timber decking oil every 6 months or as required.

Powder-Coat

Cleaning

Carefully remove any loose surface deposits with a wet sponge or soft bristled brush.

Use a soft (non-abrasive) cloth or brush and a diluted solution of mild detergent and warm water.

Ensure surfaces are thoroughly rinsed with clean fresh water after cleaning to remove all residues.

Never use thinners, abrasive cleaning agents, alcohol-based, acid or alkali cleaning agents.

Additional Comments

In the Hardwood finish, this seat can be ordered with Urban accessible armrest to meet the guidelines of Australian Standards 1428.2, and with correct installation and plinth setback, will aid in achieving project DDA compliance. For more detail follow the link: [Accessibility info](#). For AS1428.2 seats in other finishes, contact us for more information.

Mid armrests also available.

Local manufacture allows us to tailor the length, use a hardwood species to your custom requirements or Add On accessories such as memorial plaques and skate stoppers.

Public spaces can be vulnerable to high levels of wear and tear or vandalism, replacement parts available as required.
