

# PROSPECT BLOCK TABLE

Tables » Dining Height Tables



Collections: **Prospect**

Designed By: **Botton + Gardiner**

Applications: **Outdoor**

# PROSPECT BLOCK TABLE

Tables » Dining Height Tables



# PROSPECT BLOCK TABLE

Tables » Dining Height Tables

Robust block table design with a concrete base. Hardwood and Duraslat™ XG battens with steel framing details in powder-coat or galvanised finishes.

**Description**                      Featuring striking asymmetrical forms and robust materials that are based on our competition-winning designs for the Western Sydney Parklands Trust, the Prospect block table is ideal for parkland and urban environments. With a solid precast concrete base that grounds the design, the table is available in hardwood and Duraslat™ XG batten colours with steel framing details in powder-coat colours or a galvanised finish to blend in or contrast with the landscape it sits in.

**How to Specify**                      Select your length  
Select your finish  
Select your batten colour  
Select your frame finish

**Sustainability**                      Certified Hardwood  
All hardwood is sourced from sustainable forests certified by the Program for the Endorsement of Forest Certification (PEFC), the world's largest forestry certification system.

Recycled Materials  
We locally source our steel. It means we know it uses recycled content and is 100% recyclable.

Duraslat™ XG is made from 90% of recycled hardwood fibres and reclaimed plastic materials, which reduces demand for virgin materials.

Low Pollutants  
Our powder-coating process doesn't emit Volatile Organic Compounds (VOCs) and has Environmental Product Declarations (EPDs).

**Powder Coat**                      Core  
  
Solid  
  
Textured  
  
Signature  
  
Bold

**Dimensions**                      1600mmW x 970mmD x 730mmH  
  
3200mmW x 970mmD x 730mmH

**Batten Type**                      Hardwood  
  
Duraslat™ XG

# PROSPECT BLOCK TABLE

Tables » Dining Height Tables

---

Frame	Hot-dip galvanised or powder-coated steel Grey precast concrete block, off-form or acid etched exposed aggregate finish
Weight	1600mmW - 270kg 3200mmW- 540kg
Made In	Australia
Lead Time	6-8 weeks
Assembly & Delivery	The 3200mmW Prospect table will require assembly on site during installation of the battens to the 2 frame modules. Hardware and instructions supplied.
Fixing Detail	Surface or sub-surface fixed by others. Threaded rod to anchor supplied.

---

# PROSPECT BLOCK TABLE

Tables » Dining Height Tables

---

## Care Instructions

### Hardwood

#### Cleaning

Remove any loose surface deposits with a soft bristled brush and wipe down with fresh water and a non-abrasive cloth.

#### Oiling

Oiling of timber will postpone natural greying, repel moisture, improve mould resistance, help maintain a smooth surface texture and enhance the grain and colour.

To maintain, lightly sand rough areas of timber and brush on one coat of timber decking oil every 6 months or as required.

### Duraslat™ XG

#### Cleaning

Simply wash down occasionally. Do not use high pressure cleaners.

### Powder-Coat

#### Cleaning

Carefully remove any loose surface deposits with a wet sponge or soft bristled brush.

Use a soft (non-abrasive) cloth or brush and a diluted solution of mild detergent and warm water.

Ensure surfaces are thoroughly rinsed with clean fresh water after cleaning to remove all residues.

Never use thinners, abrasive cleaning agents, alcohol-based, acid or alkali cleaning agents.

---

## Warranty

5-year warranty. View the [warranty](#) for more details.

---

## Additional Comments

Optional plastic orange reflectors to increase visibility.

---

# PROSPECT BLOCK TABLE

Tables » Dining Height Tables

---

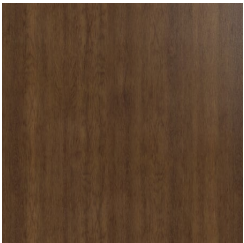
## Colour & Finish Options

### B+G Mixed Reds AU



Mixed Reds

### B+G Spotted Gum AU



Spotted Gum

### B+G Duraslat XG AU



Alcove



Boulder



Cave



Ravine



Sandy Bay

### B+G Powder Coat - Bold AU



Bondi Blue - Gloss



Leaf - Satin



Lobster - Satin



Moonlight - Satin



Sensation - Gloss

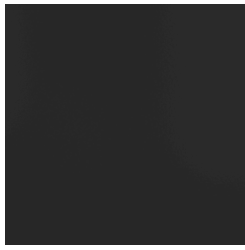
### B+G Powder Coat - Core AU

# PROSPECT BLOCK TABLE

Tables » Dining Height Tables



Black - Satin



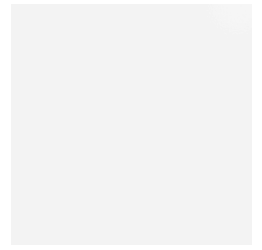
Charcoal - Satin



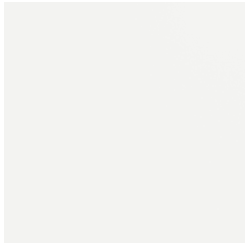
Matt Black - Matt



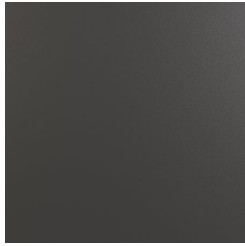
Palladium Silver - Satin



Pearl White - Gloss



White - Satin



Monument Texture

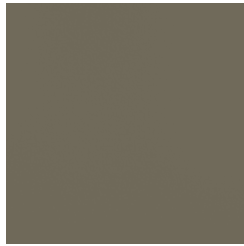
## B+G Powder Coat - Signature AU



Claypot - Satin



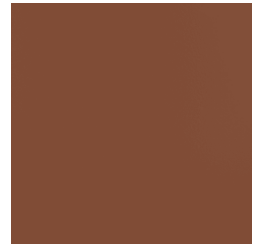
Deep Ocean - Satin



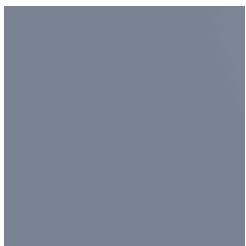
Mangrove - Satin



Paperbark - Satin



Territory Red - Matt

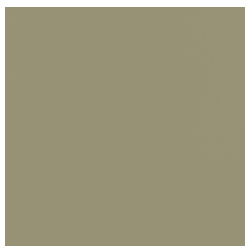


Wedgewood - Satin

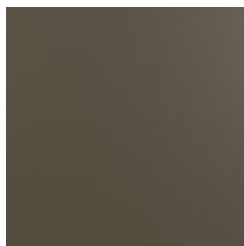
## B+G Powder Coat - Solid AU



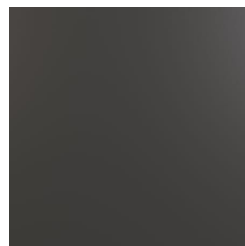
Coffee - Satin



Cove - Satin



Medium Bronze Kinetic - Flat



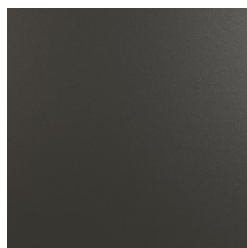
Monument - Matt

# PROSPECT BLOCK TABLE

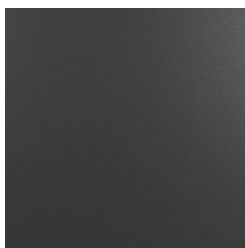
Tables » Dining Height Tables

---

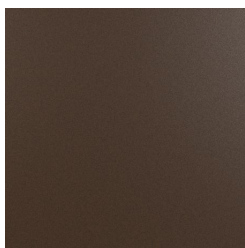
## B+G Powder Coat - Textured AU



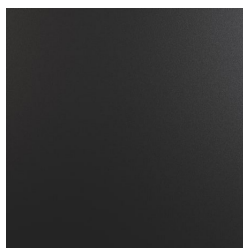
Asteroid



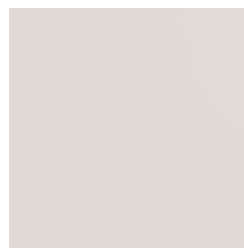
Bass



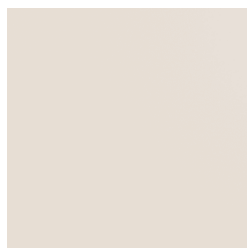
Core Ten



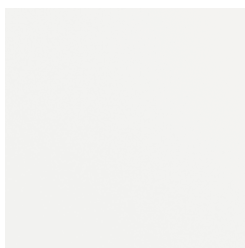
Textura Black



Textura Dune



Textura Primrose



Textura White