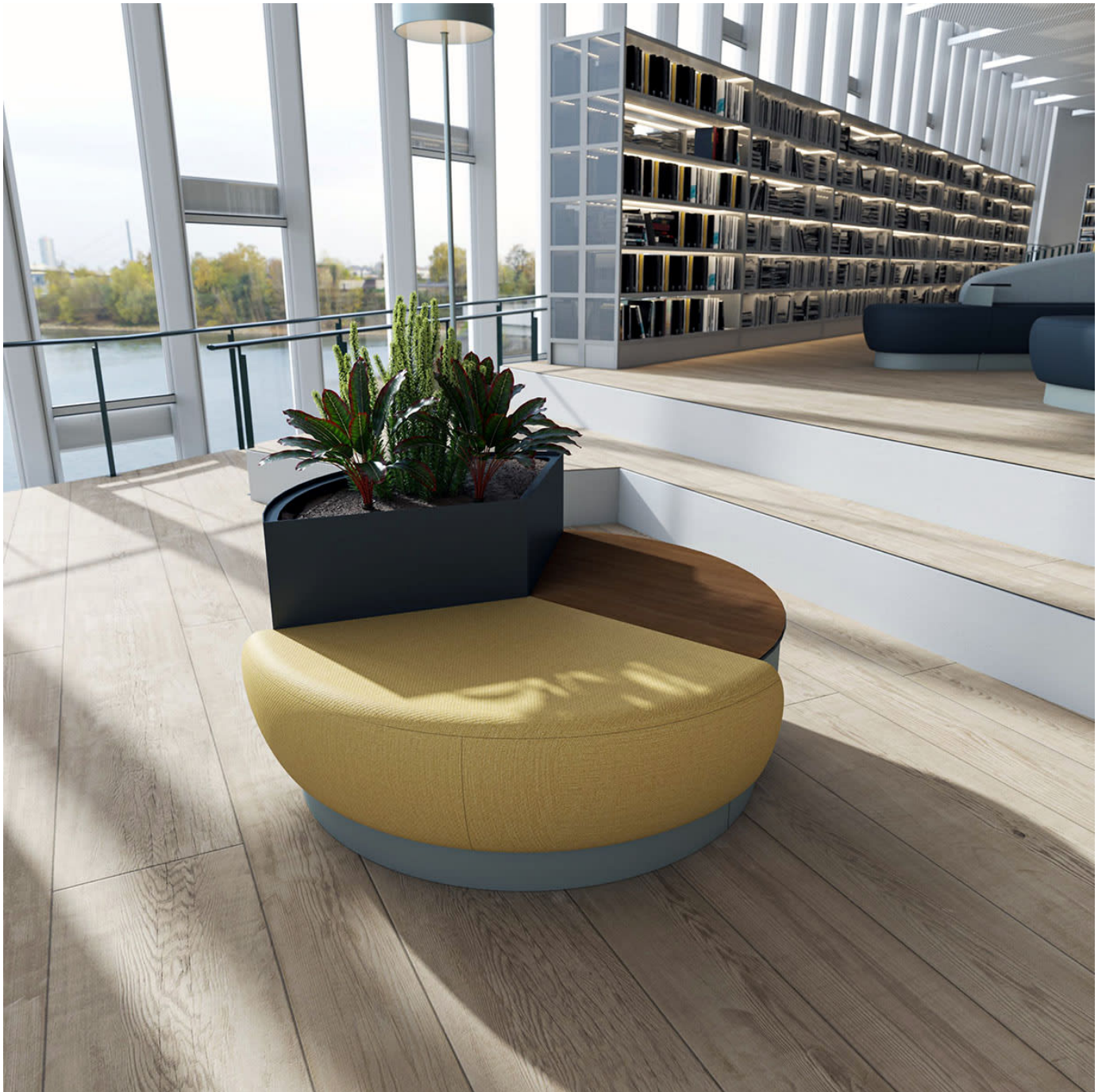


NEXUS 120° OTTOMAN

Seating » Ottomans



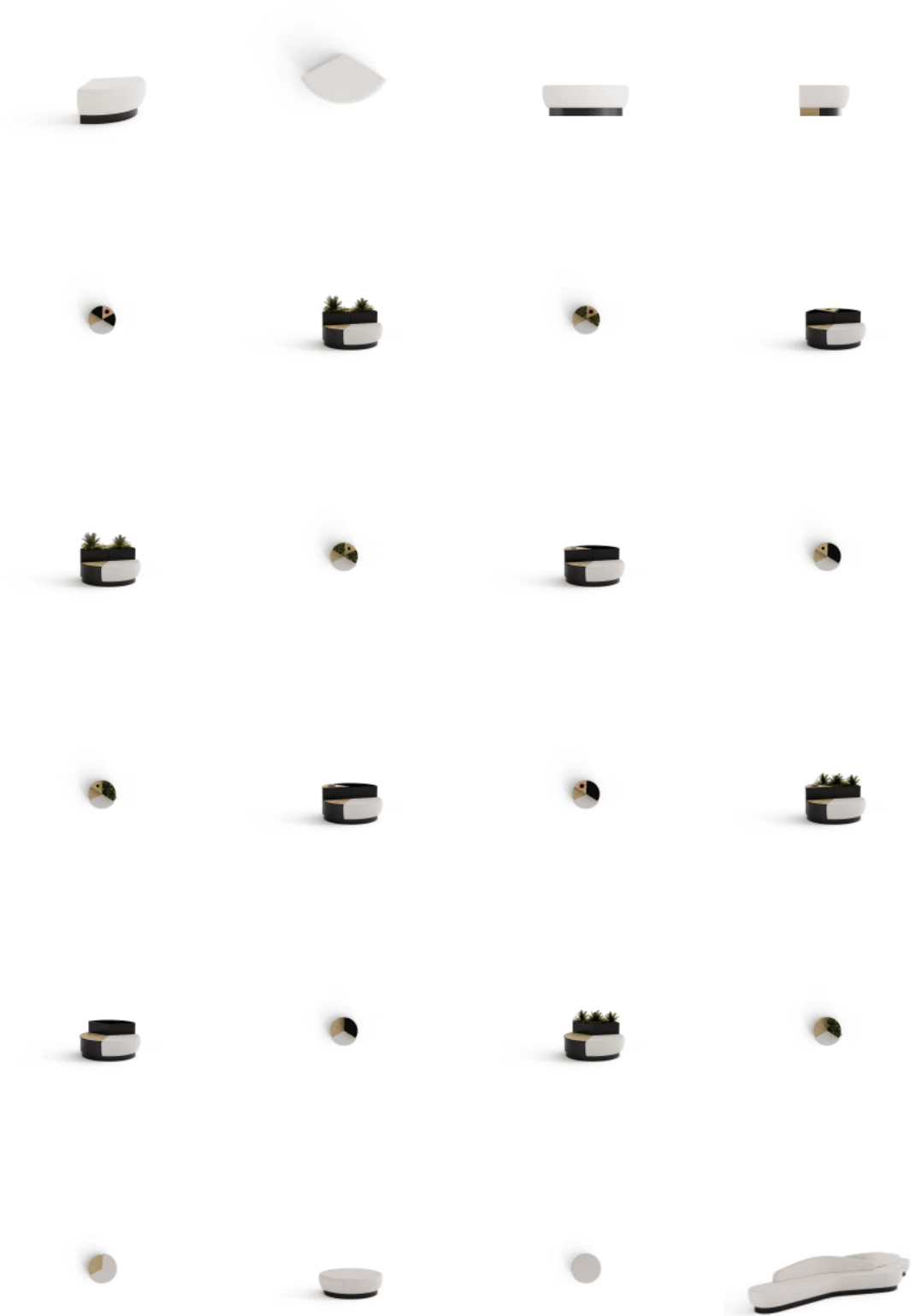
Collections: **Nexus**

Designed By: **Botton + Gardiner**

Applications: **Indoor**

NEXUS 120° OTTOMAN

Seating » Ottomans



NEXUS 120° OTTOMAN

Seating » Ottomans



NEXUS 120° OTTOMAN

Seating » Ottomans

Modern, modular, 120° ottoman seating. Mix and match upholstery fabrics, multipurpose compact laminates, solid surfaces, and powder-coat colours.

Description

Modest modularity and organic forms define the Nexus 120° ottoman that can be integrated with other modular lounge seating elements, tables, planters and litter bins that interconnect in multiple ways to become a central meeting place in a range of indoor spaces. Suitable for shopping centre breakout areas, educational collaborative spaces, transit zones and commercial lobbies, Nexus is both highly versatile and flexible. Available in an extensive range of hard-wearing materials, finishes and colours, Nexus can be customised to suit your next interior project.

Sustainability

Certified Materials

We use multipurpose compact laminates and non-porous solid surfaces that carry internationally recognised Environmental Product Declarations (EPDs).

Recycled Materials

We locally source our steel and aluminium. It means we know it uses recycled content and is 100% recyclable.

Low Pollutants

Our powder-coating process doesn't emit Volatile Organic Compounds (VOCs) and has Environmental Product Declarations (EPDs).

Finishes

Upholstery Fabrics

Specify a Baresque upholstery fabric or supply your own to be approved by us to ensure it is fit for purpose.

Baresque

Meru - Lake, Abyss, Charcoal, Root, Nickel, Vellum, Chablis, Caribbean, Emerald, Tranquil, Nectar, Fiesta

Approved Baresque Fabric Collections

Abilene, Cassidy, Castle, Chamois, Gleam Beyond, Lara, Meru, Ranger, Inception Galleria, Sebago, Spirit Vinyl Up, Uptown 3, Yosemite.

A wider selection of materials + finishes is available.

NEXUS 120° OTTOMAN

Seating » Ottomans

Powder Coat	<p>Core White (satin), Black (satin), Charcoal (satin), Palladium Silver (satin), Matt Black (matt), Pearl White (gloss)</p> <p>Solid Coffee (satin), Cove (satin), Monument (matt), Medium Bronze Kinetic (flat)</p> <p>Textured Core Ten (textured metallic), Asteroid (textured metallic), Bass (textured metallic), Textura Black (textured), Textura Monument (textured), Textura White (textured)</p> <p>Signature Deep Ocean (satin), Wedgewood (satin), Mangrove (satin), Territory Red (matt), Claypot (satin), Paperbark (satin)</p> <p>Bold Bondi Blue (gloss), Leaf (satin), Sensation (gloss), Lobster (satin), Moonlight (satin)</p>
-------------	--

Dimensions	1265mmW x 730mmD x 450mmH
------------	---------------------------

Fabric Amount Required	3.0m - based on one plain fabric 137cm wide.
------------------------	--

Frame	<p>Internal Frame Medium Density Fibreboard (MDF)</p> <p>Kick Plate Powder-coated aluminium</p>
-------	---

Made In	Australia
---------	-----------

Lead Time	6-8 weeks
-----------	-----------

Assembly & Delivery	Shipped fully assembled on pallets.
---------------------	-------------------------------------

Fixing Detail	Freestanding only - loose on glides. Modules are fixed together by ratchet connectors.
---------------	--

NEXUS 120° OTTOMAN

Seating » Ottomans

Care Instructions

Baresque Upholstery Fabrics

Use a cloth with any of the following in preferred order of use:

1. Clear warm water
2. Mild solution of liquid detergent and warm water
3. Isopropyl Alcohol (rubbing alcohol)

Remove any detergent with a clean, damp cloth. Gently pat dry.

For more difficult stains, dampen a soft white cloth with a solution of household bleach (mix 10% bleach with 90% water). Rub gently. Rinse with a water dampened cloth to remove bleach concentration.

Do not use solvent based or concentrated abrasive cleaning agents, lacquer thinners or nail polish remover as these may cause discolouration over a period of time.

Always test in an inconspicuous area first.

Multipurpose Compact Laminates | Laminex®

A damp cloth will remove spills and greasy spots. Rub with a clean dry cloth to bring back brightness. Occasionally clean with mild dishwashing detergent. To remove heavy build-up of dirt use cleaners such as Mr Muscle, Windex, or Ajax Spray n Wipe spray cleaners.

Do not use strong acidic, alkaline cleaners or bleach for normal cleaning as these might etch the surface.

Solid Surfaces | Corian®

Generally, when caring for Corian always start with a simple clean eg. using a damp sponge or cloth. Avoid using abrasive scouring pads for routine cleaning. Rinse clean.

For a deep clean of stubborn stains, a more thorough clean and refresh using a mild abrasive cleanser is recommended like Gumption, JIF Cream Cleanser or Ajax cream or powder cleanser. Firmly wipe with a damp cloth using a wide circular motion. Always finish by rinsing and wiping your surface with a damp cloth or sponge.

Powder-Coat Finishes

Carefully remove any loose surface deposits with a wet sponge or soft bristled brush.

Use a soft (non-abrasive) cloth or brush and a diluted solution of mild detergent and warm water.

Ensure surfaces are thoroughly rinsed with clean fresh water after cleaning to remove all residues.

Never use thinners, abrasive cleaning agents, alcohol-based, acid or alkali cleaning agents.

Warranty

2-year warranty. View the [warranty](#) for more details.

NEXUS 120° OTTOMAN

Seating » Ottomans

Additional Comments

Commercial-grade, high-density foam with a dacron top layer is used for padding and comfort.

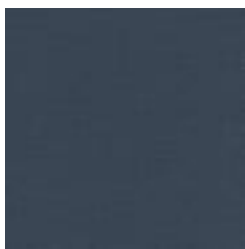
How to Specify

Select your configuration or create your own
Select your fit for purpose upholstery fabric
Select your surface finish
Select your frame finish

NEXUS 120° OTTOMAN

Seating » Ottomans

Colour & Finish Options



Baresque Meru
Upholstery Fabric
Lake



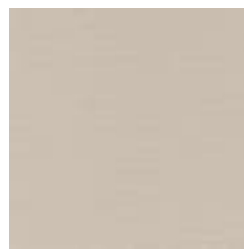
Baresque Meru
Upholstery Fabric
Abyss



Baresque Meru
Upholstery Fabric
Charcoal



Baresque Meru
Upholstery Fabric
Root



Baresque Meru
Upholstery Fabric
Nickel



Baresque Meru
Upholstery Fabric
Vellum



Baresque Meru
Upholstery Fabric
Chablis



Baresque Meru
Upholstery Fabric
Caribbean



Baresque Meru
Upholstery Fabric
Emerald



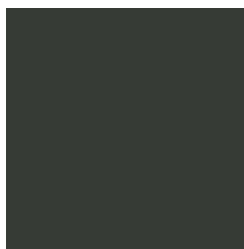
Baresque Meru
Upholstery Fabric
Nectar



Baresque Meru
Upholstery Fabric
Fiesta



Core Powder-Coat
White Satin



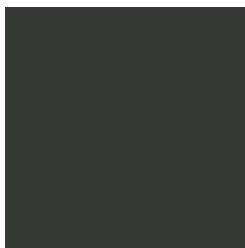
Core Powder-Coat
Black Satin



Core Powder-Coat
Charcoal Satin



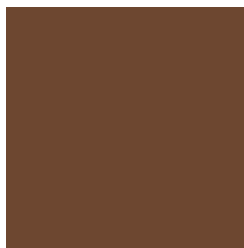
Core Powder-Coat
Palladium Silver Satin



Core Powder-Coat
Matt Black Matt



Core Powder-Coat
Pearl White Gloss



Solid Powder-Coat
Coffee Satin



Solid Powder-Coat
Cove Satin



Solid Powder-Coat
Monument Matt



NEXUS 120° OTTOMAN

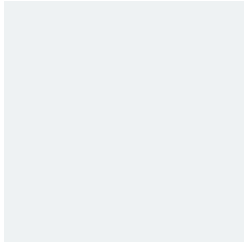
Seating » Ottomans

Solid Powder-Coat
Medium Bronze
Kinetic Flat



Textured Powder-Coat
Textura
Monument

Textured Powder-Coat
Core Ten
Textured Metallic



Textured Powder-Coat
Textura
White

Textured Powder-Coat
Asteroid
Textured Metallic



Signature Powder-Coat
Deep Ocean
Satin

Textured Powder-Coat
Bass Textured
Metallic



Signature Powder-Coat
Wedgewood
Satin

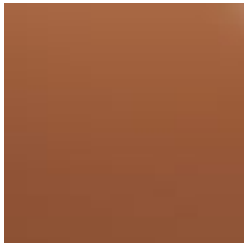
Textured Powder-Coat
Textura
Black



Signature Powder-Coat
Mangrove
Satin



Signature Powder-Coat
Territory Red
Satin



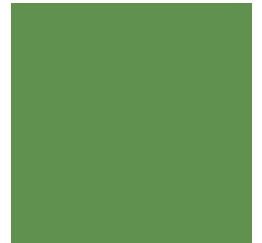
Signature Powder-Coat
Claypot
Satin



Signature Powder-Coat
Paperbark
Satin



Bold Powder-Coat
Bondi Blue
Gloss



Bold Powder-Coat
Leaf
Satin



Bold Powder-Coat
Sensation
Gloss



Bold Powder-Coat
Lobster
Satin



Bold Powder-Coat
Moonlight
Satin