

# MORETON BIN

Bins » Litter Bins



Collections: **Essentials**

Designed By: **Botton + Gardiner**

Applications: **Indoor, Outdoor Undercover**



# MORETON BIN

Bins » Litter Bins



Moreton Litter Bin Double Project



Moreton Litter Bin Double 2



Moreton Litter Bin Double project image



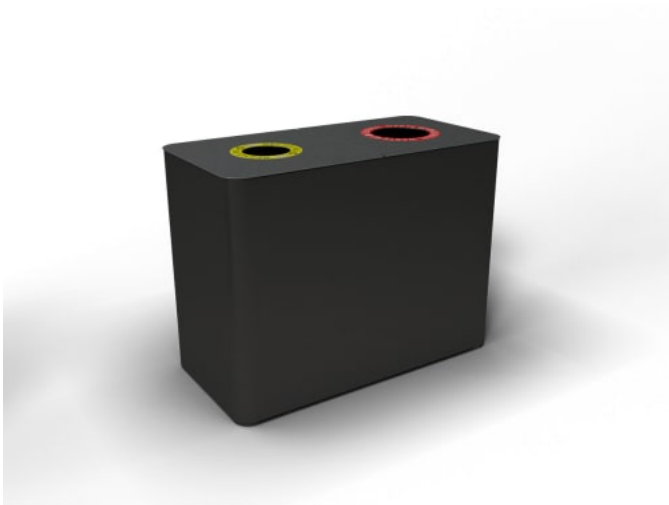
Moreton Litter Bin Double 3

# MORETON BIN

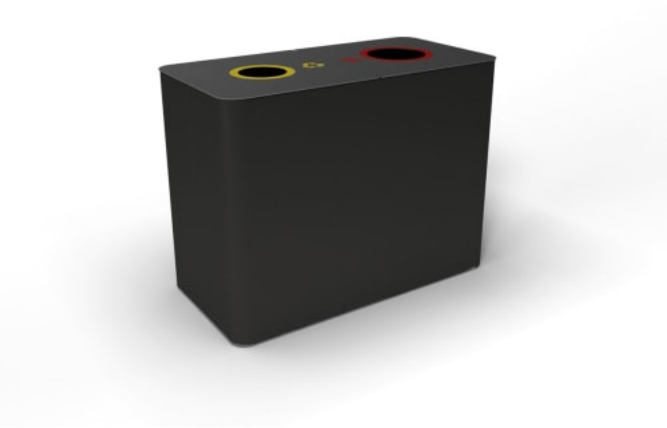
Bins » Litter Bins



Moreton Litter Bin Double Lid Detail



Moreton Litter Bin Double Detail



Moreton Litter Bin Double Detail 2



Moreton Litter Bin Double Detail 3

# MORETON BIN

Bins » Litter Bins

Modern, simple, rectangular double litter bin for multi-stream recycling. Powder-coated steel in a variety of colours with a stainless-steel lid.

Description	<p>Featuring a streamlined, no-fuss aesthetic, <b>Moreton Litter Bin Double</b> is the perfect cost-effective solution for indoor/outdoor recycling litter bins in commercial projects. The product quality for the cost equals unbeatable value for a dual capacity rubbish bin.</p> <p>Mandalay Litter Bin Double in select finishes is part of b+g's <b>Essential Collection</b> delivering favourable pricing and leadtimes.</p> <p>Select from Core powder coat colours and battens in hardwood blackbutt or Duraslat™ XG to qualify.</p>
How to Specify	<p>Select your body powder-coat colour</p> <p>Select your signage type</p>
Sustainability	<p><b>Recycled Materials</b> We locally source our steel. It means we know it uses recycled content and is 100% recyclable.</p> <p><b>Low Pollutants</b> Our powder-coating process doesn't emit Volatile Organic Compounds (VOCs) and has Environmental Product Declarations (EPDs).</p>
Material	<p><b>Options:</b></p> <p><b>Lid</b></p> <p>Flat, hinged in Stainless steel satin polished</p> <p><b>Body</b></p> <p>Galvanised steel. Powder-coated Liner: Polyethylene</p> <p><b>Powder-Coat Colours</b></p> <p>Refer Colour + Finishes</p>
Powder Coat	<ul style="list-style-type: none"><li>• Core (<b>Essentials Collection Finish</b>)</li><li>• Solid</li><li>• Textured</li><li>• Signature</li><li>• Bold</li></ul>

# MORETON BIN

Bins » Litter Bins

Dimensions	1024W x 518D x 783mm high General Waste Chutes: 200mm + Recycling 150mm DIA
Capacity	2 x 90L polyethylene liners
Frame	Powdercoated pre-galvanised steel
Signage	<b>Flat Chute.</b> Vinyl decals, standard or custom designs available.  Vinyl signage is easily recognisable by customers at point of disposal.  Vinyl decals can be removed and replaced in future for changes to waste streams.
Made In	Australia
Lead Time	Essentials Collection Finishes 3-4 weeks All Other Finishes 4-6 weeks
Assembly & Delivery	Shipped fully assembled.
Fixing Detail	Freestanding

# MORETON BIN

Bins » Litter Bins

## Care Instructions

### Powder-Coat

Carefully remove any loose surface deposits with a wet sponge or soft bristled brush.

Use a soft (non-abrasive) cloth or brush and a diluted solution of mild detergent and warm water.

Ensure surfaces are thoroughly rinsed with clean fresh water after cleaning to remove all residues.

Never use thinners, abrasive cleaning agents, alcohol-based, acid or alkali cleaning agents.

### Stainless Steel

Wash the surface regularly using warm water containing soap or mild detergents and rinse the surface with fresh water after cleaning.

When polishing the surface with a soft dry cloth to ensure all moisture is removed, follow the direction of the grain finish.

Use a brush or soft damp cloth to remove loose deposits. Use a cream cleanser and soft cloth for difficult deposits.

Use “Star Brite Rust Stain Remover” to remove tea staining and “Star Brite Chrome & Stainless Steel Polish” to protect the surface after cleaning.

Never use cleaners containing harsh abrasives or high bleach contents. Prolonged contact with chlorine-based cleaners will cause surface pitting, which cannot be repaired.

Never use abrasive materials such as scouring pads, steel wool or metallic scrapers.

For stubborn stains or where “deep cleaning” is required, a mild abrasive cleaner or rust remover may be required.

## Warranty

5-year warranty. View the [warranty](#) for more details.

## Customisable

The Moreton bin is locally made and customisable to suit your requirements.

## Additional Comments

Double size has a hinged lid which folds for easy removal of the liners.

Manage recycling by splitting your waste streams.



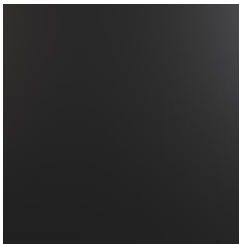
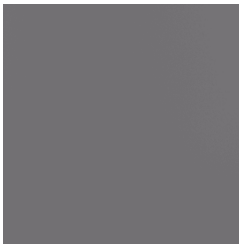
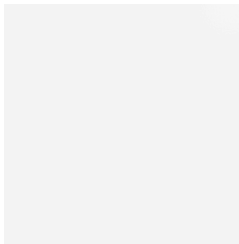
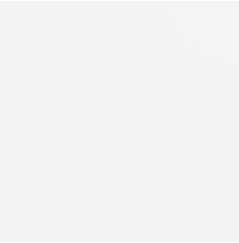

Chutes act as limiters to signal recycling and save labour in sorting.

# MORETON BIN

Bins » Litter Bins

## Colour & Finish Options

### B+G Powder Coat - Core AU

				
Black - Satin	Charcoal - Satin	Matt Black - Matt	Palladium Silver - Satin	Pearl White - Gloss
				
White - Satin	Monument Texture			

### B+G Powder Coat - Bold AU

				
Bondi Blue - Gloss	Leaf - Satin	Lobster - Satin	Moonlight - Satin	Sensation - Gloss

### B+G Powder Coat - Signature AU

				
Claypot - Satin	Deep Ocean - Satin	Mangrove - Satin	Paperbark - Satin	Territory Red - Matt



# MORETON BIN

Bins » Litter Bins



Wedge wood - Satin

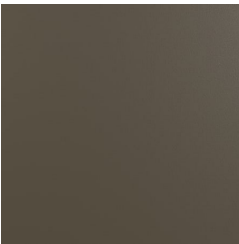
## B+G Powder Coat - Solid AU



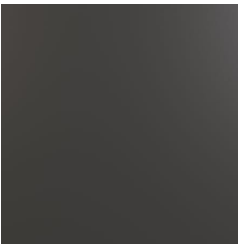
Coffee - Satin



Cove - Satin

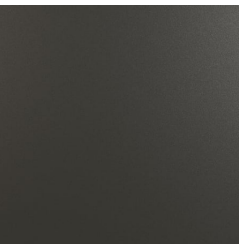


Medium Bronze  
Kinetic - Flat

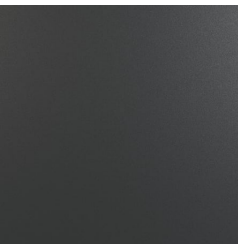


Monument - Matt

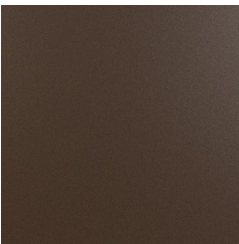
## B+G Powder Coat - Textured AU



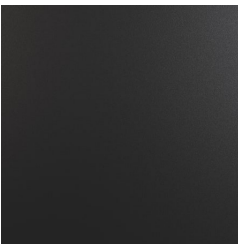
Asteroid



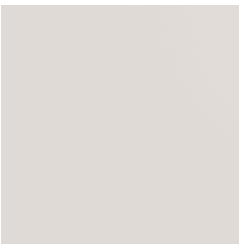
Bass



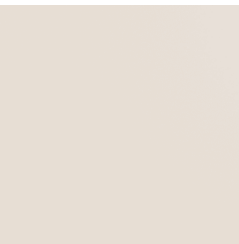
Core Ten



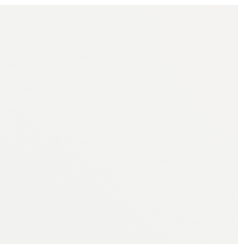
Textura Black



Textura Dune

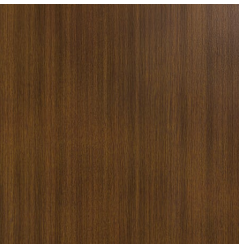


Textura Primrose

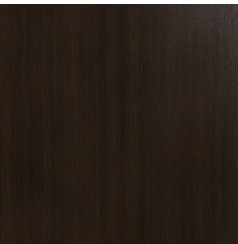


Textura White

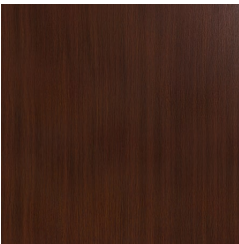
## B+G Hardwood AU



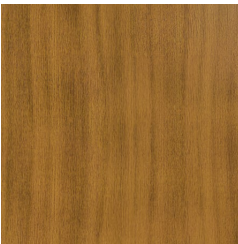
Dark Oak



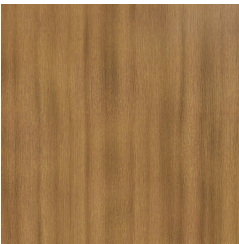
Ebony



Mahogany



Pine



Natural



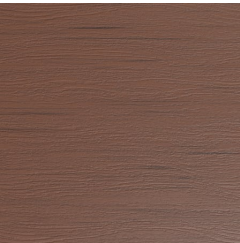
# MORETON BIN

Bins » Litter Bins

## B+G Duraslat XG AU



Alcove



Boulder



Cave



Ravine