

# LORENZ

Seating » Benches



Collection: **Metalco**

Designed by: **Massimo Tasca, Pio & Tito Toso, Mattia Li Pomi**

# LORENZ

Seating » Benches



Precast Concrete  
White Granite  
Brushed



Precast Concrete  
White Granite  
Sandblasted



Precast Concrete  
Grey Granite  
Brushed



Precast Concrete  
Grey Granite  
Sandblasted



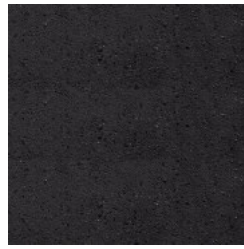
Precast Concrete  
White Marble  
Brushed



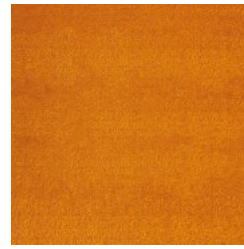
Precast Concrete  
White Marble  
Sandblasted



Precast Concrete  
Black Marble  
Brushed



Precast Concrete  
Black Marble  
Sandblasted



Hardwood Akoume  
Varnished



Hardwood  
Pigmented  
Impregnation



Hardwood Untreated



# LORENZ

Seating » Benches

---



# LORENZ

Seating » Benches

Modular monolithic seating. Organic-shaped linear and curved modules made of precast concrete with stone aggregate paired with hardwood elements.

**Description** Lorenz, designed by Massimo Tasca, Pio & Tito Toso, Mattia Li Pomi, is a stunning mix of organic curves, natural materials and textures with elegant modularity. This contemporary seating collection includes a linear bench and seat in 2 sizes each and a curved bench to allow for a huge array of compositions. Lorenz is designed to be paired with the Treeline collection for even greater flexibility. Made of precast concrete with a granite or marble aggregate paired with hardwood elements, the seating collection is both stylish and highly versatile to suit many public spaces.

**Made In** Europe

**Dimensions**

Short bench  
1000mmW x 750mmD x 460mmH

Long bench  
2200mmW x 750D x 460mmH

Short seat  
1000mmW x 750mmD x 795mmH  
Seat height: 460mm

Long seat  
2200mmW x 750D x 795mmH  
Seat height: 460mm

120° curved bench  
2070mmW x 1200mmD x 460mmH

**Weight**

LORE.C.GN: Lorenz 120° Curved Bench - 1480kg

Internal Direction  
LORE.1000.GN.IN: 1000mmL Lorenz Bench - 707kg  
LORE.2200.GN.IN: 2200mmL Lorenz Bench - 1560kg  
LORE.S.1000.GN.IN: 1000mmL Lorenz Seat - 815kg  
LORE.S.2200.GN.IN: 2200mmL Lorenz Seat - 1780kg

External Direction  
LORE.1000.GN.EX: 1000mmL Lorenz Bench - 707kg  
LORE.2200.GN.EX: 2200mmL Lorenz Bench - 1560kg  
LORE.S.1000.GN.EX: 1000mmL Lorenz Seat - 815kg  
LORE.S.2200.GN.EX: 2200mmL Lorenz Seat - 1780kg

**Batten Type** Hardwood  
Exotic hardwood - oiled

# LORENZ

Seating » Benches

---

Frame	<p>Body Precast concrete with stone aggregate PDM - Reconstituted Stone 4 options: White Granite, Grey Granite, White Marble, Black Marble</p> <p>Body Finish Sandblasted</p> <p>Optional Clear anti-graffiti coating (to the concrete plane)</p>
Warranty	5-year warranty. View the <a href="#">warranty</a> for more details.
Lead Time	12+ weeks.
Assembly & Delivery	<p>Product supplied in components packed on pallets.</p> <p>Lifting equipment required for receipt, assembly and placement of concrete product (by others).</p> <p>Supplied with ferrules, eyebolts and caps.</p>
Fixing Detail	Freestanding
How to Specify	<p>Design your layout with your select modules Check the module directions match up Send your layout marked up with codes to Botton + Gardiner to review and quote</p>

---

## Care Instructions

### Precast Concrete

#### Cleaning

Remove any loose surface deposits with a brush.

Regularly wash the coating using a solution of warm water and non-abrasive, pH neutral detergent solution (with low wax content).

Thoroughly rinse the surfaces after cleaning to remove all residues. You can use a sponge, a soft bristle brush or pressure water cleaners. For pressure cleaners ensure you use cold or warm water and average pressure. Rinse after with fresh water and leave to dry.

Do not use abrasive sponges, discs, or brushes.

Do not use corrosive detergents, descaling agents, or acidic components (bleach, ammonia, vinegar, abrasive pastes).

For cleaning marks or solidified substances from the surface use slightly abrasive sponges for non-stick ceramic pans, accurately and lightly treat the parts to be cleaned as above. Please check with Botton + Gardiner for advice relating to cleaning special circumstances (i.e. stains from paint, acid, etc.) as required.

#### Maintenance

For surfaces prone to additional wear like that used for street furniture, regular treatment is recommended (at least every 2 years) with products containing high wax content. Evenly apply the product with a soft cloth and polish with a circular motion.

Avoid the products from being placed on surfaces subject to infiltrations or stagnant water puddles.

### Hardwood

Metalco selects exotic wood that best suits the product and/or the project according to availability. Species may include: Angelim Amargoso, Iroko, Movingui, and Ipe. Wood is always supplied sealed with a pigmented vegetable oil.

#### Cleaning

Remove any loose surface deposits with a soft bristled brush. Wipe down regularly with fresh water and a non-abrasive cloth.

Avoid exposure to high levels of direct heat sources and open flame, i.e. if a pot is too hot to hold it may damage your timber surface and keep away from open flame.

#### Maintenance

Lightly sand rough areas of timber, brush on one coat of Sikkens Cetol HLS or similar external grade oil in an appropriate colour. Complete the above initially within 3 months, then every 6 months or as required. Areas with high amounts of dust (like building sites) will require a higher frequency of maintenance.

Minor abrasion or scuff repairs: Apply Mirotone Wax or similar as per manufacturer's guidelines.

# LORENZ

Seating » Benches

---

## Additional Comments

### Customisable

Huge variety of ways modules can be placed together allows for customisation of the configuration.

### Options

The bench ends of the Lorenz are both slightly angled and more elliptical than circular. This results in modular pieces needing to match directionally to fit together and the short and long benches and seats have the options of internal or external to denote direction, i.e. the side the hardwood element is on in conjunction to the end. See downloads tab for more information for end directions on each piece.

Upon request, if the product allows it, it is possible to perform polishing operations.

The finished products are treated with a revitalising varnish and, if requested, anti-graffiti treatment can be applied.

---