

URBAN POST TABLE AS1428.2 END ACCESS

Tables » Dining Height Tables



Collections: **Urban**

Designed By: **Botton + Gardiner**

Applications: **Indoor, Outdoor**

URBAN POST TABLE AS1428.2 END ACCESS

Tables » Dining Height Tables



URBAN POST TABLE AS1428.2 END ACCESS

Tables » Dining Height Tables



URBAN POST TABLE AS1428.2 END ACCESS

Tables » Dining Height Tables

Post table AS1428.2 with end access. Hardwood, Duraslat™ XG, aluminium battens with a cast aluminium frame in powder-coat finishes or polished.

✓ AS1428.2

Description

Referencing Paris's famous wrought ironwork, curved cast aluminium framing is complemented by muscular hardwood, Duraslat™ XG or aluminium surfaces to offer a timeless Urban post table AS1428.2 with end access. It includes wheelchair accessible settings and this table meets Australian Standards 1428.2 for wheelchair access to the table side. Locally made with low lead times, pair with benches and seats from the Urban range to create comfortable and durable picnic settings, ideal for parks, public spaces, universities and shopping centres. Finishes include hardwood, Duraslat™ XG or aluminium colours and powder-coat finishes or a polished aluminium finish. Urban is close to our heart; a classic, elegant, and highly functional collection that works in almost any public space.

How to Specify

Select your length
Select your seating type
Select your batten finish
Select your frame finish
Select your fixing type

Sustainability

Certified Hardwood
All hardwood is sourced from sustainable forests certified by the Program for the Endorsement of Forest Certification (PEFC), the world's largest forestry certification system.

Recycled Materials
We locally source our aluminium. It means we know it uses recycled content and is 100% recyclable.

Duraslat™ XG is made from 90% of recycled hardwood fibres and reclaimed plastic materials, which reduces demand for virgin materials.

Low Pollutants
Our powder-coating process doesn't emit Volatile Organic Compounds (VOCs) and has Environmental Product Declarations (EPDs).

Powder Coat

Core
Solid
Textured
Signature
Bold

URBAN POST TABLE AS1428.2 END ACCESS

Tables » Dining Height Tables

Dimensions	Hardwood 1800mmW x 750mmD x 868mmH Duraslat™ XG 1600mmW x 750mmD x 868mmH Aluminium Alugrain 2000mmW x 750mmD x 868mmH
Batten Type	Hardwood Duraslat™ XG Aluminium Alugrain
Frame	Cast aluminium in a powder-coat or polished finish Post: powder-coated galvanised steel, colour to match frame specification or silver to coordinate with the polished aluminium finish
Made In	Australia
Lead Time	4-6 weeks
Assembly & Delivery	Shipped fully assembled on pallets.
Fixing Detail	Post fixed by others - surface, sub-surface or core-holed. Anchors not included.

URBAN POST TABLE AS1428.2 END ACCESS

Tables » Dining Height Tables

Care Instructions

Hardwood

Cleaning

Remove any loose surface deposits with a soft bristled brush and wipe down with fresh water and a non-abrasive cloth.

Oiling

Oiling of timber will postpone natural greying, repel moisture, improve mould resistance, help maintain a smooth surface texture and enhance the grain and colour.

To maintain, lightly sand rough areas of timber and brush on one coat of timber decking oil every 6 months or as required.

Duraslat™ XG

Cleaning

Simply wash down occasionally. Do not use high pressure cleaners.

Powder-Coat

Cleaning

Carefully remove any loose surface deposits with a wet sponge or soft bristled brush.

Use a soft (non-abrasive) cloth or brush and a diluted solution of mild detergent and warm water.

Ensure surfaces are thoroughly rinsed with clean fresh water after cleaning to remove all residues.

Never use thinners, abrasive cleaning agents, alcohol-based, acid or alkali cleaning agents.

Warranty

5-year warranty. View the [warranty](#) for more details.

Additional Comments

This table meets the guidelines of Australian Standards 1428.2 for wheelchair accessibility, and with correct installation, will aid in achieving project DDA compliance.

Seating Options

- Urban Classic Bench
- Urban Classic Seat
- Urban Post Bench
- Urban Post Seat

Pair with benches or seats. Botton + Gardiner recommends shimming seating to increase seat height with increased table height.

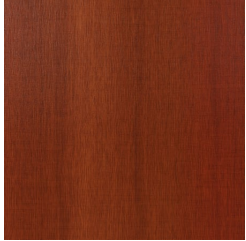
Opt to add Umbrella hole + flange or outdoor power and GPOs to make your settings flexible outdoor working zones ideal for universities and schools.

URBAN POST TABLE AS1428.2 END ACCESS

Tables » Dining Height Tables

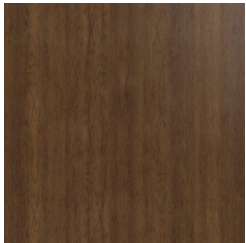
Colour & Finish Options

B+G Mixed Reds AU



Mixed Reds

B+G Spotted Gum AU



Spotted Gum

B+G Duraslat XG AU



Alcove



Boulder

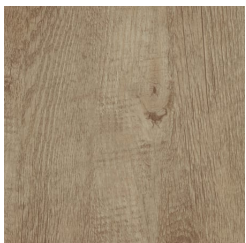


Cave

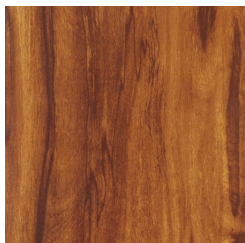


Ravine

Alugrain



Driftwood



Spotted Gum

B+G Powder Coat - Bold AU

URBAN POST TABLE AS1428.2 END ACCESS

Tables » Dining Height Tables



Bondi Blue - Gloss



Leaf - Satin



Lobster - Satin

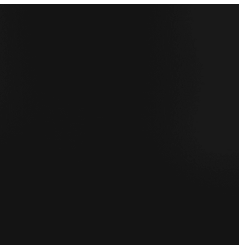


Moonlight - Satin

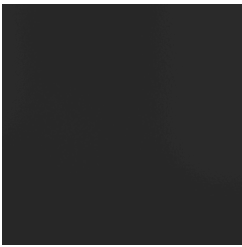


Sensation - Gloss

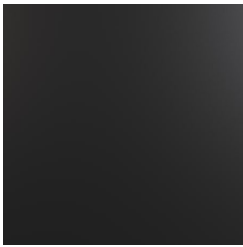
B+G Powder Coat - Core AU



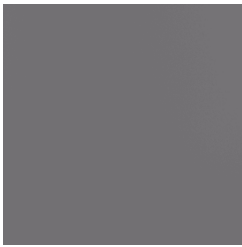
Black - Satin



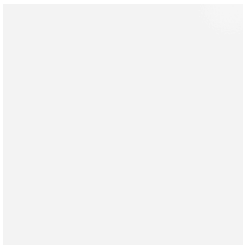
Charcoal - Satin



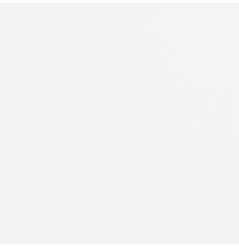
Matt Black - Matt



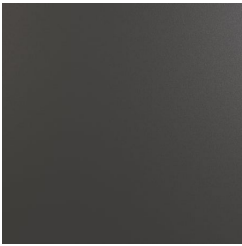
Palladium Silver - Satin



Pearl White - Gloss



White - Satin



Monument Texture

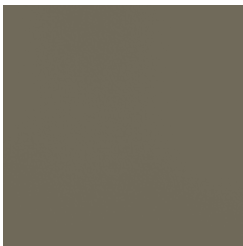
B+G Powder Coat - Signature AU



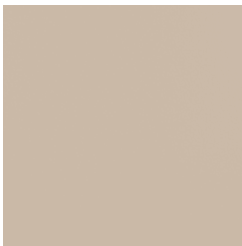
Claypot - Satin



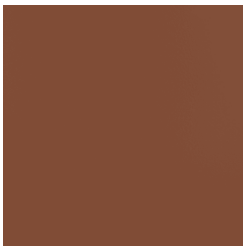
Deep Ocean - Satin



Mangrove - Satin



Paperbark - Satin



Territory Red - Matt

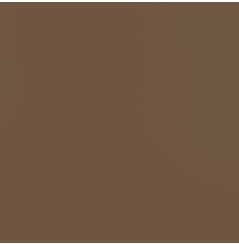


Wedgewood - Satin

B+G Powder Coat - Solid AU

URBAN POST TABLE AS1428.2 END ACCESS

Tables » Dining Height Tables



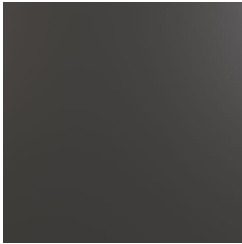
Coffee - Satin



Cove - Satin

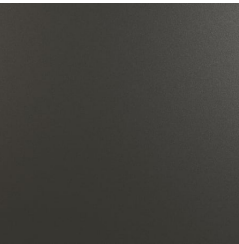


Medium Bronze
Kinetic - Flat

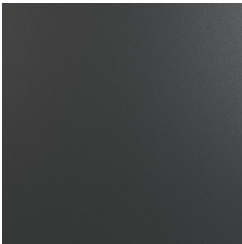


Monument - Matt

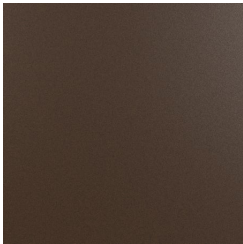
B+G Powder Coat - Textured AU



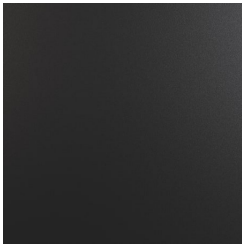
Asteroid



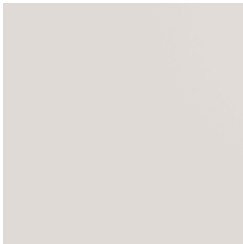
Bass



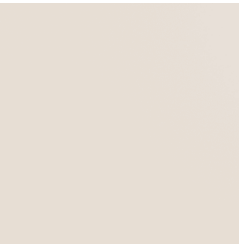
Core Ten



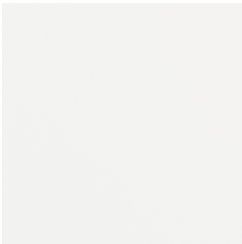
Textura Black



Textura Dune



Textura Primrose



Textura White