

ATOMIK LARGE RECTANGLE TABLE

Tables » Low Tables



Collections: **Atomik**

Designed By: **Botton + Gardiner**

Applications: **Indoor**

ATOMIK LARGE RECTANGLE TABLE

Tables » Low Tables

Modern, modular, large rectangle table design. Mix and match a wide range of finishes and configurations to create a range of custom pod options.

Description

The Atomik large rectangle table forms part of the Atomik modular seating collection that offers a mix of upholstered ottomans together with planters, tables, and screens in a range of 13 geometric shapes. With flexibility and versatility in mind, multiple configurations of mixed-use pods can be created to suit small or large spaces. Together with a wide range of finishes, Atomik can be tailored to suit specific project requirements for use in shopping centres, hospitality, office break-out areas, commercial lobbies, universities, and schools.

Sustainability

Certified Materials

We use multipurpose compact laminates and non-porous solid surfaces that carry internationally recognised Environmental Product Declarations (EPDs).

Recycled Materials

We locally source our steel. It means we know it uses recycled content and is 100% recyclable.

Low Pollutants

Our powder-coating process doesn't emit Volatile Organic Compounds (VOCs) and has Environmental Product Declarations (EPDs).

Finishes

Table Top

Multipurpose Compact Laminate 13mm | [Laminex®](#)

Licorice Linea, Natural Walnut, Elegant Oak, Classic Oak, Calm Oak, Seasoned Oak, Black, Charcoal, Lava Grey, Limed Concrete, Figured Limestone, White Valencia

Solid Surfaces 12mm | [Corian®](#)

Basalt Terrazzo, Platinum, Silver Birch, Silver Grey, Pearl Grey, Glacier White, Deep Anthracite, Deep Titanium, Carbon Aggregate, Dove, Neutral Concrete, Canvas

A wider selection of materials + finishes is available.

ATOMIK LARGE RECTANGLE TABLE

Tables » Low Tables

Powder Coat	<p>Core White (satin), Black (satin), Charcoal (satin), Palladium Silver (satin), Matt Black (matt), Pearl White (gloss)</p> <p>Solid Coffee (satin), Cove (satin), Monument (matt), Medium Bronze Kinetic (flat)</p> <p>Textured Core Ten (textured metallic), Asteroid (textured metallic), Bass (textured metallic), Textura Black (textured), Textura Monument (textured), Textura White (textured)</p> <p>Signature Deep Ocean (satin), Wedgewood (satin), Mangrove (satin), Territory Red (matt), Claypot (satin), Paperbark (satin)</p> <p>Bold Bondi Blue (gloss), Leaf (satin), Sensation (gloss), Lobster (satin), Moonlight (satin)</p>
-------------	--

Dimensions	850mmW x 500mmD x 620mmH
------------	--------------------------

Frame	<p>Powder-coated steel.</p> <p>Steel legs elevate the upholstered form off the ground.</p>
-------	--

Made In	Australia
---------	-----------

Lead Time	6-8 weeks
-----------	-----------

Assembly & Delivery	<p>Assembly Some simple assembly is required (by others) to connect modules - brackets fitted to the underside simply need to be turned and modules pushed together. See brochure for details. Backrests and arms are pre-fitted to the ottomans. A drawing will be supplied with the recommended connection order.</p> <p>Delivery Atomik is delivered to site in modules by furniture removalists.</p>
---------------------	--

Fixing Detail	<p>Freestanding only - loose on glides. Modules are fixed together by ratchet connectors.</p>
---------------	---

ATOMIK LARGE RECTANGLE TABLE

Tables » Low Tables

Care Instructions

Multipurpose Compact Laminates | Laminex®

A damp cloth will remove spills and greasy spots. Rub with a clean dry cloth to bring back brightness. Occasionally clean with mild dishwashing detergent. To remove heavy build-up of dirt use cleaners such as Mr Muscle, Windex, or Ajax Spray n Wipe spray cleaners.

Do not use strong acidic, alkaline cleaners or bleach for normal cleaning as these might etch the surface.

Solid Surfaces | Corian®

Generally, when caring for Corian always start with a simple clean eg. using a damp sponge or cloth. Avoid using abrasive scouring pads for routine cleaning. Rinse clean.

For a deep clean of stubborn stains, a more thorough clean and refresh using a mild abrasive cleanser is recommended like Gumption, JIF Cream Cleanser or Ajax cream or powder cleanser. Firmly wipe with a damp cloth using a wide circular motion. Always finish by rinsing and wiping your surface with a damp cloth or sponge.

Powder-Coat Finishes

Carefully remove any loose surface deposits with a wet sponge or soft bristled brush.

Use a soft (non-abrasive) cloth or brush and a diluted solution of mild detergent and warm water.

Ensure surfaces are thoroughly rinsed with clean fresh water after cleaning to remove all residues.

Never use thinners, abrasive cleaning agents, alcohol-based, acid or alkali cleaning agents.

Warranty

2-year warranty. View the [warranty](#) for more details.

Customisable

Atomik is made locally and can be tailored to suit your interior project. Select from a range of table top finishes such as Corian®, engineered stone and digital print on a variety of substrates, as well as custom screen perforations or custom metallic powder-coats and much more.

Botton + Gardiner can assist you with configuring your layouts. 2D or 3D drawings or kits of the modules are available.

Optional GPOs can be added to the modular pods to power them up as charging or working stations.

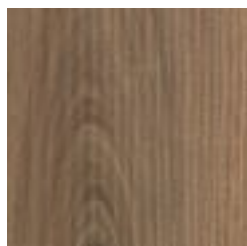
How to Specify

Select your configuration or create your own
Select your surface finish
Select your frame finish

ATOMIK LARGE RECTANGLE TABLE

Tables » Low Tables

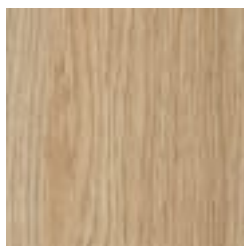
Colour & Finish Options



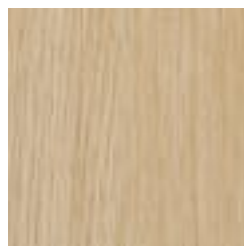
Laminex®
Multipurpose
Compact Laminate
Natural Walnut



Laminex®
Multipurpose
Compact Laminate
Elegant Oak



Laminex®
Multipurpose
Compact Laminate
Classic Oak



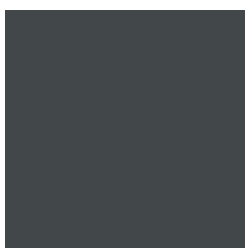
Laminex®
Multipurpose
Compact Laminate
Calm Oak



Laminex®
Multipurpose
Compact Laminate
Seasoned Oak



Laminex®
Multipurpose
Compact Laminate
Black



Laminex®
Multipurpose
Compact Laminate
Charcoal



Laminex®
Multipurpose
Compact Laminate
Lava Grey



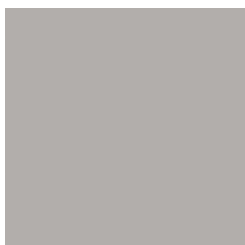
Corian® Solid Surface
Basalt Terrazzo



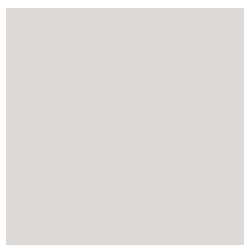
Corian® Solid Surface
Platinum



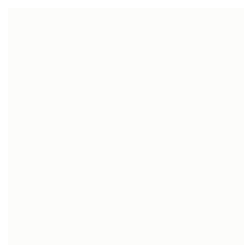
Corian® Solid Surface
Silver Birch



Corian® Solid Surface
Silver Grey



Corian® Solid Surface
Pearl Grey



Corian® Solid Surface
Glacier White



Corian® Solid Surface
Deep Anthracite



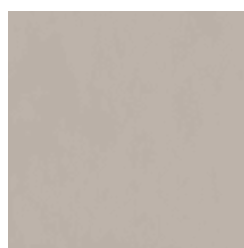
Corian® Solid Surface
Deep Titanium



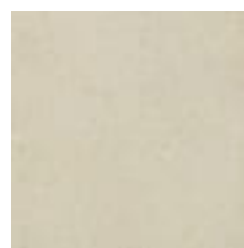
Corian® Solid Surface
Carbon Aggregate



Corian® Solid Surface
Dove



Corian® Solid Surface
Neutral Concrete



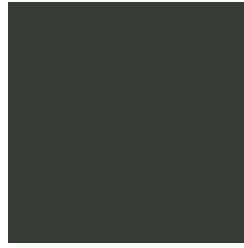
Corian® Solid Surface
Canvas

ATOMIK LARGE RECTANGLE TABLE

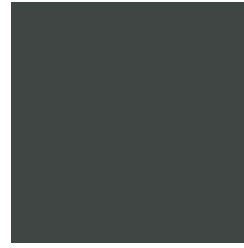
Tables » Low Tables



Hardwood Vic Ash
UV-Resistant
Lacquered Internal
Use Only



Core Powder-Coat
Black Satin



Core Powder-Coat
Charcoal Satin



Core Powder-Coat
Palladium Silver Satin



Core Powder-Coat
Matt Black Matt



Solid Powder-Coat
Coffee Satin



Solid Powder-Coat
Cove Satin



Solid Powder-Coat
Monument Matt



Solid Powder-Coat
Medium Bronze
Kinetic Flat



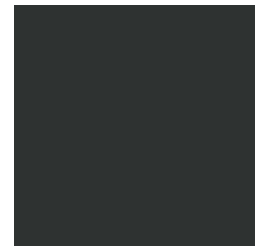
Textured Powder-
Coat Core Ten
Textured Metallic



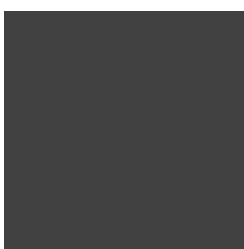
Textured Powder-
Coat Asteroid
Textured Metallic



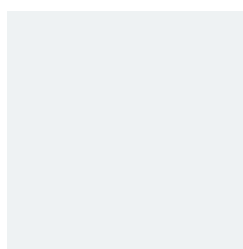
Textured Powder-
Coat Bass Textured
Metallic



Textured Powder-
Coat Textura Black



Textured Powder-
Coat Textura
Monument



Textured Powder-
Coat Textura White



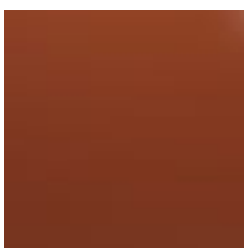
Signature Powder-
Coat Deep Ocean
Satin



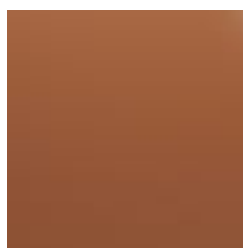
Signature Powder-
Coat Wedgewood
Satin



Signature Powder-
Coat Mangrove Satin



Signature Powder-



Signature Powder-



Signature Powder-



Bold Powder-Coat



Bold Powder-Coat

ATOMIK LARGE RECTANGLE TABLE

Tables » Low Tables

Coat Territory Red
Satin



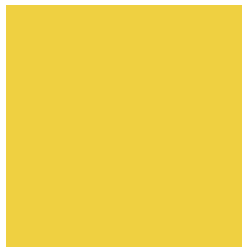
Bold Powder-Coat
Sensation Gloss

Coat Claypot Satin



Bold Powder-Coat
Lobster Satin

Coat Paperbark Satin



Bold Powder-Coat
Moonlight Satin

Bondi Blue Gloss

Leaf Satin