

BRITTANY ARMCHAIR

Seating » Armchairs



Designed By: **Botton + Gardiner**

Applications: **Indoor**

BRITTANY ARMCHAIR

Seating » Armchairs



BRITTANY ARMCHAIR

Seating » Armchairs

This high, curved back wing armchair is ideal for a wide range of commercial settings. Wide selection of fabrics to suit your interior space.

Description This high, curved back wing armchair is excellent for a moment of privacy in busy commercial settings. Brittany has an elegant piped detail which works well with contrasting fabrics. Use Brittany in mall pod seating, parents rooms, lobbies, workspaces and education spaces. Made to order locally in Sydney to your fabric specification with a low lead time.

Sustainability Certified Materials
All hardwood is sourced from sustainable forests certified by the Program for the Endorsement of Forest Certification (PEFC), the world's largest forestry certification system.

Finishes Upholstery Fabrics
Specify a [Baresque upholstery fabric](#) or supply your own to be approved by us to ensure it is fit for purpose.

Baresque

Chamois:

Espresso, Truffle, Mahogany, Cappuccino, Cognac, Luggage, Camel, Storm, Antelope, Elephant, Cashew, Fawn, Bone, Fog, Pewter, Patina, Charcoal, Cinnamon, Bordeaux, Salsa, Molten, Black, Navy, Indigo, Cerulean, Paradise, Mallard, Sassafrass

A wider selection of materials + finishes is available.

Seat legs: Tasmanian oak, natural finish

Dimensions 750W x 800D x 890mmH
Seat height: 450mm
Arm height: 590mm

Fabric Amount Required 4.8m based on one plain fabric 137cm wide

Made In Australia

Lead Time 6-8 weeks

Assembly & Delivery Shipped fully assembled on pallets.

Fixing Detail Supplied with glides for loose use as standard.

BRITTANY ARMCHAIR

Seating » Armchairs

Care Instructions

Baresque Upholstery Fabrics

Use a cloth with any of the following in preferred order of use:

1. Clear warm water
2. Mild solution of liquid detergent and warm water
3. Isopropyl Alcohol (rubbing alcohol)

Remove any detergent with a clean, damp cloth. Gently pat dry.

For more difficult stains, dampen a soft white cloth with a solution of household bleach (mix 10% bleach with 90% water). Rub gently. Rinse with a water dampened cloth to remove bleach concentration.

Do not use solvent based or concentrated abrasive cleaning agents, lacquer thinners or nail polish remover as these may cause discolouration over a period of time.

Always test in an inconspicuous area first.

Warranty

2-year warranty. View the [warranty](#) for more details.

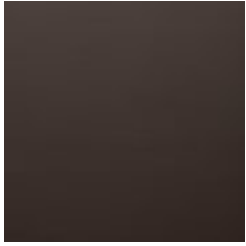
How to Specify

Select your fabric

BRITTANY ARMCHAIR

Seating » Armchairs

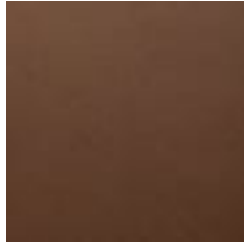
Colour & Finish Options



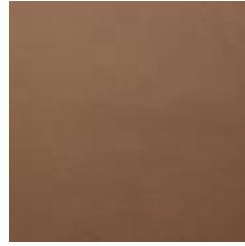
Baresque Chamois
Upholstery Fabric
Espresso



Baresque Chamois
Upholstery Fabric
Truffle



Baresque Chamois
Upholstery Fabric
Mahogany



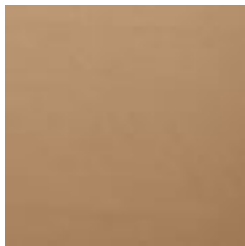
Baresque Chamois
Upholstery Fabric
Cappuccino



Baresque Chamois
Upholstery Fabric
Cognac



Baresque Chamois
Upholstery Fabric
Luggage



Baresque Chamois
Upholstery Fabric
Camel



Baresque Chamois
Upholstery Fabric
Storm



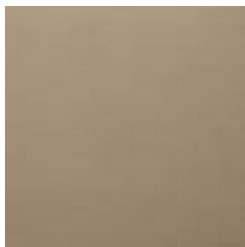
Baresque Chamois
Upholstery Fabric
Antelope



Baresque Chamois
Upholstery Fabric
Elephant



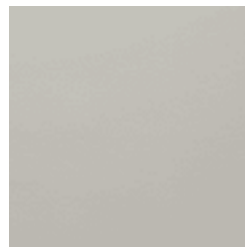
Baresque Chamois
Upholstery Fabric
Cashew



Baresque Chamois
Upholstery Fabric
Fawn



Baresque Chamois
Upholstery Fabric
Bone



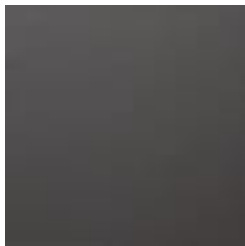
Baresque Chamois
Upholstery Fabric
Fog



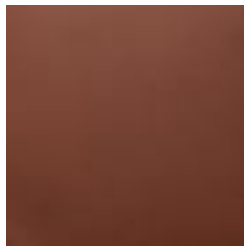
Baresque Chamois
Upholstery Fabric
Pewter



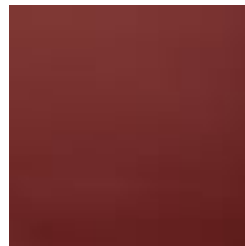
Baresque Chamois
Upholstery Fabric
Patina



Baresque Chamois
Upholstery Fabric
Charcoal



Baresque Chamois
Upholstery Fabric
Cinnamon



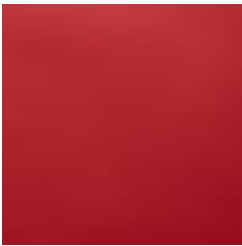
Baresque Chamois
Upholstery Fabric
Bordeaux



Baresque Chamois
Upholstery Fabric
Salsa

BRITTANY ARMCHAIR

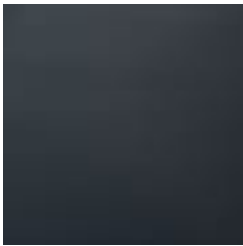
Seating » Armchairs



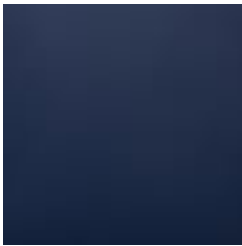
Baresque Chamois
Upholstery Fabric
Molten



Baresque Chamois
Upholstery Fabric
Black



Baresque Chamois
Upholstery Fabric
Navy



Baresque Chamois
Upholstery Fabric
Indigo



Baresque Chamois
Upholstery Fabric
Cerulean



Baresque Chamois
Upholstery Fabric
Paradise



Baresque Chamois
Upholstery Fabric
Mallard



Baresque Chamois
Upholstery Fabric
Sassafrass