

JULIE ARMCHAIR

Seating » Armchairs



Designed By: **Botton + Gardiner**

Applications: **Indoor**

JULIE ARMCHAIR

Seating » Armchairs



JULIE ARMCHAIR

Seating » Armchairs

An elegant armchair with gently curved arms is ideal for a wide range of commercial settings. Wide selection of fabrics to suit your interior space.

Description With its elegant lines and gently curved arms the Julie armchair is a must have contemporary piece. The solid hardwood legs bring a classic elegance to a commercial environment. The comfortable and supportive high back and lower arms ensures Julie is perfect for use in any environment but especially ideal for an infant feeding chair in shopping centre parents rooms. Available with a co-ordinating sofa. Made to order locally in Sydney to your fabric specification with a low lead time.

Sustainability Certified Materials
All hardwood is sourced from sustainable forests certified by the Program for the Endorsement of Forest Certification (PEFC), the world's largest forestry certification system.

Finishes [Upholstery Fabrics](#)
Specify a [Baresque upholstery fabric](#) or supply your own to be approved by us to ensure it is fit for purpose.

[Baresque](#)

[Chamois:](#)

Espresso, Truffle, Mahogany, Cappuccino, Cognac, Luggage, Camel, Storm, Antelope, Elephant, Cashew, Fawn, Bone, Fog, Pewter, Patina, Charcoal, Cinnamon, Bordeaux, Salsa, Molten, Black, Navy, Indigo, Cerulean, Paradise, Mallard, Sassafrass

A wider selection of materials + finishes is available.

Seat legs: Tasmanian oak, natural finish

Dimensions 800mmW x 850mmD x 1020mmH
Seat height: 450mm
Arm height: 620mm

Fabric Amount Required 4.8m based on one plain fabric 137cm wide

Made In Australia

Lead Time 6-8 weeks

Assembly & Delivery Shipped fully assembled on pallets.

Fixing Detail Supplied with glides for loose use as standard.

JULIE ARMCHAIR

Seating » Armchairs

Care Instructions

Baresque Upholstery Fabrics

Use a cloth with any of the following in preferred order of use:

1. Clear warm water
2. Mild solution of liquid detergent and warm water
3. Isopropyl Alcohol (rubbing alcohol)

Remove any detergent with a clean, damp cloth. Gently pat dry.

For more difficult stains, dampen a soft white cloth with a solution of household bleach (mix 10% bleach with 90% water). Rub gently. Rinse with a water dampened cloth to remove bleach concentration.

Do not use solvent based or concentrated abrasive cleaning agents, lacquer thinners or nail polish remover as these may cause discolouration over a period of time.

Always test in an inconspicuous area first.

Warranty

2-year warranty. View the [warranty](#) for more details.

How to Specify

Select your fabric

JULIE ARMCHAIR

Seating » Armchairs

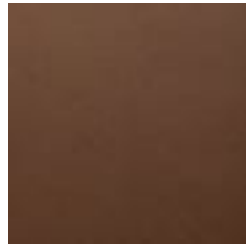
Colour & Finish Options



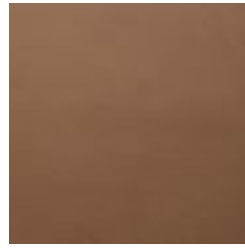
Baresque Chamois
Upholstery Fabric
Espresso



Baresque Chamois
Upholstery Fabric
Truffle



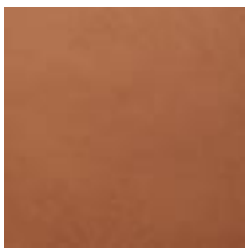
Baresque Chamois
Upholstery Fabric
Mahogany



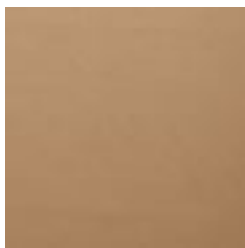
Baresque Chamois
Upholstery Fabric
Cappuccino



Baresque Chamois
Upholstery Fabric
Cognac



Baresque Chamois
Upholstery Fabric
Luggage



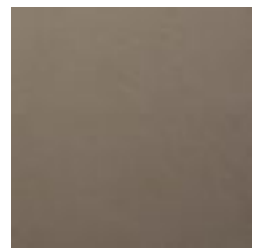
Baresque Chamois
Upholstery Fabric
Camel



Baresque Chamois
Upholstery Fabric
Storm



Baresque Chamois
Upholstery Fabric
Antelope



Baresque Chamois
Upholstery Fabric
Elephant



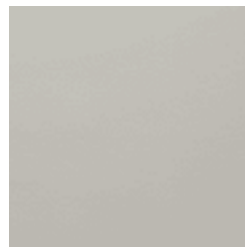
Baresque Chamois
Upholstery Fabric
Cashew



Baresque Chamois
Upholstery Fabric
Fawn



Baresque Chamois
Upholstery Fabric
Bone



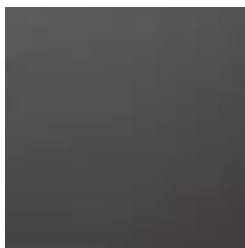
Baresque Chamois
Upholstery Fabric
Fog



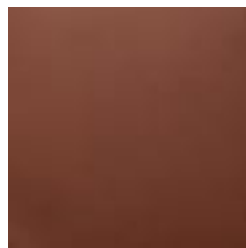
Baresque Chamois
Upholstery Fabric
Pewter



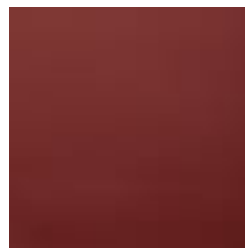
Baresque Chamois
Upholstery Fabric
Patina



Baresque Chamois
Upholstery Fabric
Charcoal



Baresque Chamois
Upholstery Fabric
Cinnamon



Baresque Chamois
Upholstery Fabric
Bordeaux



Baresque Chamois
Upholstery Fabric
Salsa

JULIE ARMCHAIR

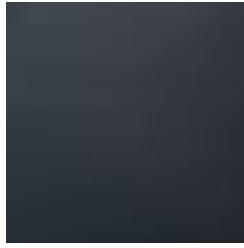
Seating » Armchairs



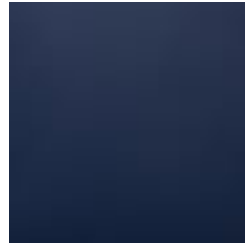
Baresque Chamois
Upholstery Fabric
Molten



Baresque Chamois
Upholstery Fabric
Black



Baresque Chamois
Upholstery Fabric
Navy



Baresque Chamois
Upholstery Fabric
Indigo



Baresque Chamois
Upholstery Fabric
Cerulean



Baresque Chamois
Upholstery Fabric
Paradise



Baresque Chamois
Upholstery Fabric
Mallard



Baresque Chamois
Upholstery Fabric
Sassafrass