

TORQUAY PLANTER

Accessories » Planters



Collections: **Torquay**

Designed By: **Botton + Gardiner**

TORQUAY PLANTER

Accessories » Planters



planter + litter bin



planter detail

TORQUAY PLANTER

Accessories » Planters

The Torquay Planter is the ideal addition for those looking to combine functionality with greenery, offering a stylish solution to brighten up any setting.

Description

The Torquay Planter is an optional feature designed to attach seamlessly to your bin, adding a decorative element that enhances the aesthetic appeal of any public or commercial space. Perfect for bringing a touch of nature to shopping centers, offices, parks, or urban areas, this planter maximizes space usage while creating a welcoming environment.

Sustainability

Recycled Materials

We locally source our steel. It means we know it uses recycled content and is 100% recyclable.

Low Pollutants

Our powder-coating process doesn't emit Volatile Organic Compounds (VOCs) and has Environmental Product Declarations (EPDs).

Powder Coat

Core

Black (satin), Charcoal (satin), Matt Black (matt), Palladium Silver (satin), Pearl White, White (satin)

Solid

Coffee (satin), Cove (satin), Medium Bronze Kinetic (flat)

Textured

Asteroid (textured metallic), Bass (textured metallic), Black (textured), Core Ten (textured metallic), Dune, Primrose, Textura Black (textured), Textura Monument (textures), Textura White (textured)

Signature

Claypot (satin), Deep Ocean (satin), Mangrove (satin), Paperbark (satin), Territory Red (matt), Wedgewood (satin)

Bold

Bondi Blue (gloss), Leaf (satin), Lobster (satin), Moonlight (satin), Sensation (gloss)

Dimensions 464mm W x 817mm H

Frame Galvanised Steel, powder coated

Made In Australia

TORQUAY PLANTER

Accessories » Planters

Lead Time	4-6 weeks
-----------	-----------

Assembly & Delivery	Shipped fully assembled.
---------------------	--------------------------

Fixing Detail	All Torquay Bins require floor fixing except the Litter Bin which can be free-standing. Floor fixed by others (anchors not included)
---------------	--

Care Instructions	<p>Powder-Coat Carefully remove any loose surface deposits with a wet sponge or soft bristled brush.</p> <p>Use a soft (non-abrasive) cloth or brush and a diluted solution of mild detergent and warm water.</p> <p>Ensure surfaces are thoroughly rinsed with clean fresh water after cleaning to remove all residues.</p> <p>Never use thinners, abrasive cleaning agents, alcohol-based, acid or alkali cleaning agents.</p>
-------------------	--

Warranty	5-year warranty. Visit baresque.com.au/warranty for complete details.
----------	--

Customisable	The Botton + Gardiner range is customisable to your project. Please get in touch with your local contact or call 1300 762 701 for details.
--------------	--

TORQUAY PLANTER

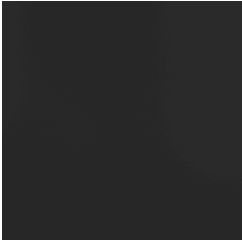
Accessories » Planters

Colour & Finish Options

B+G Powder Coat - Core AU



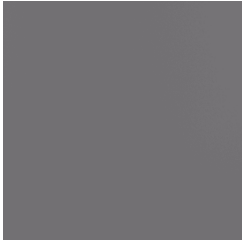
Black - Satin



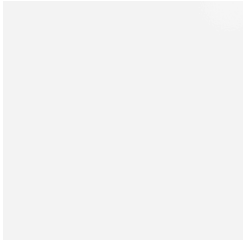
Charcoal - Satin



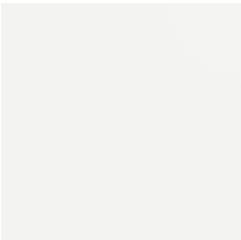
Matt Black - Matt



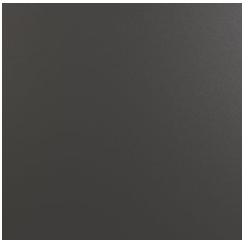
Palladium Silver - Satin



Pearl White - Gloss

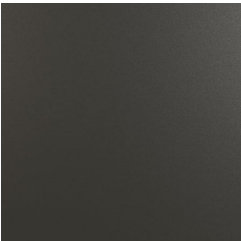


White - Satin

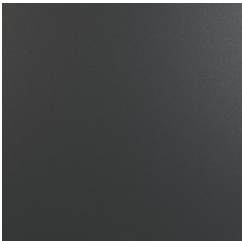


Monument Texture

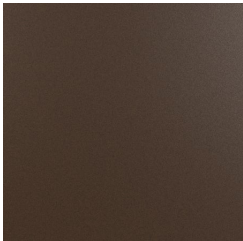
B+G Powder Coat - Textured AU



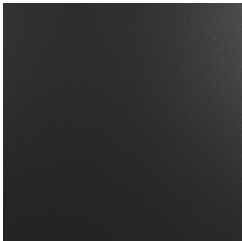
Asteroid



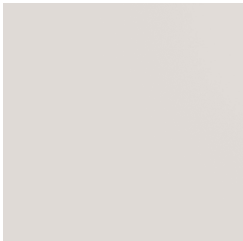
Bass



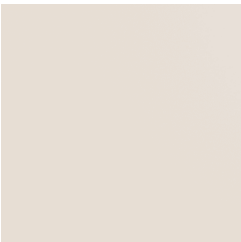
Core Ten



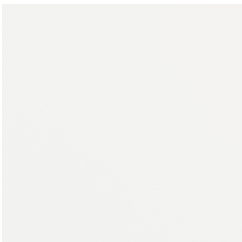
Textura Black



Textura Dune



Textura Primrose



Textura White

B+G Powder Coat - Solid AU

TORQUAY PLANTER

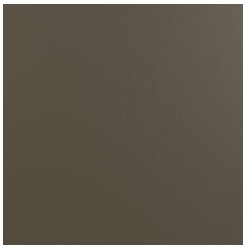
Accessories » Planters



Coffee - Satin



Cove - Satin



Medium Bronze
Kinetic - Flat



Monument - Matt

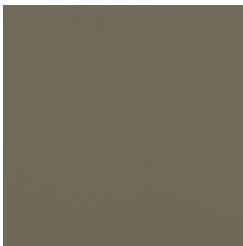
B+G Powder Coat - Signature AU



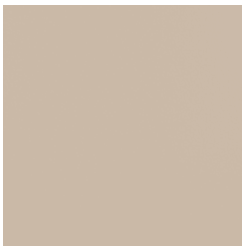
Claypot - Satin



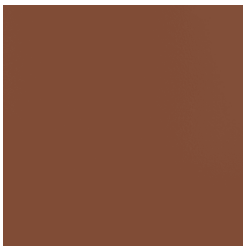
Deep Ocean - Satin



Mangrove - Satin



Paperbark - Satin



Territory Red - Matt



Wedgewood - Satin

B+G Powder Coat - Bold AU



Bondi Blue - Gloss



Leaf - Satin



Lobster - Satin



Moonlight - Satin



Sensation - Gloss