

COTTESLOE LITTER BIN TRIPLE

Bins » Litter Bins



Designed By: **Botton + Gardiner**

Applications: **Indoor**

COTTESLOE LITTER BIN TRIPLE

Bins » Litter Bins



Cottesloe Triple Litter Bin - Gas Lift



Cottesloe Triple Litter Bin - Draft

COTTESLOE LITTER BIN TRIPLE

Bins » Litter Bins

Modern, round, triple litter bins for indoor multi-stream recycling. Choose from an array of stunning Corian® solid surface colours.

Description

Cottesloe Litter Bin Triple is a refined, space-efficient solution that accommodates three separate waste streams within a beautifully minimal design. Crafted with a seamless Corian® body in a range of organic hues, it offers a non-porous, hygienic surface ideal for premium indoor spaces.

Also available in Single and Double configurations, Cottesloe gives you design flexibility with a consistent aesthetic. The Triple is equipped with a gas-assisted lift mechanism, making emptying safe and effortless for staff. Choose from stainless steel or powder-coated lid finishes to create a custom look that complements your space.

How to Specify

Select your capacity - single, double or triple
Select your body finish colour
Select your lid finish - stainless steel or powder coats
Select your signage type - vinyl or engraved enamel
Select your fixing type - loose or surface fixed

Sustainability

Certified Materials
We use non-porous solid surfaces that carry internationally recognised Environmental Product Declarations (EPDs).

Recycled Materials
We locally source our steel. It means we know it uses recycled content and is 100% recyclable.

Low Pollutants
Our powder-coating process doesn't emit Volatile Organic Compounds (VOCs) and has Environmental Product Declarations (EPDs).

Finishes

Body
Thermoformed Corian®

Colours
Select from the [Corian® colour range](#)

COTTESLOE LITTER BIN TRIPLE

Bins » Litter Bins

Material	<div>Options:</div> <div>Lid</div> <div>Flat, Loose in Stainless steel satin polished</div> <div>Body</div> <div>Thermoformed Corian® Liner: Polyethylene</div> <div>Plinth</div> <div>Stainless steel, satin polished</div> <div>Powder-Coat Colours</div> <div>Refer Colour + Finishes</div>
Powder Coat	<div>Core</div> <div>Solid</div> <div>Textured</div> <div>Signature</div> <div>Bold</div>
Dimensions	<div>Triple</div> <div>1030mmW x 504mmD x 821mm high</div> <div>Triple</div> <div>100x265mm paper slot</div> <div>230x265mm general waste chute</div> <div>150mm DIA recycling chute</div>
Capacity	<div>Triple</div> <div>1 x 65L, 2 x 45L galvanised steel liners</div>
Frame	<div>Thermoformed Corian® body with stainless steel, satin polished lid and plinth. Stainless steel lids are also available in a powder-coat finish to match or contrast with the body colour.</div>

COTTESLOE LITTER BIN TRIPLE

Bins » Litter Bins

Signage	<p>Flat Chute. Vinyl decals, standard or custom designs available.</p> <p>Vinyl signage on the double + triple bins is easily recognisable by customers at point of disposal.</p> <p>Vinyl decals can be removed and replaced in future for changes to waste streams.</p>
Made In	Australia
Lead Time	6-8 weeks
Assembly & Delivery	Shipped fully assembled.
Fixing Detail	Freestanding or surface fixed by others. Anchors not included.

COTTESLOE LITTER BIN TRIPLE

Bins » Litter Bins

Care Instructions

Solid Surfaces | Corian®

Generally, when caring for Corian always start with a simple clean eg. using a damp sponge or cloth. Avoid using abrasive scouring pads for routine cleaning. Rinse clean.

For a deep clean of stubborn stains, a more thorough clean and refresh using a mild abrasive cleanser is recommended like Gumption, JIF Cream Cleanser or Ajax cream or powder cleanser. Firmly wipe with a damp cloth using a wide circular motion. Always finish by rinsing and wiping your surface with a damp cloth or sponge.

Stainless Steel

Wash the surface regularly using warm water containing soap or mild detergents and rinse the surface with fresh water after cleaning.

When polishing the surface with a soft dry cloth to ensure all moisture is removed, follow the direction of the grain finish.

Use a brush or soft damp cloth to remove loose deposits. Use a cream cleanser and soft cloth for difficult deposits.

Use “Star Brite Rust Stain Remover” to remove tea staining and “Star Brite Chrome & Stainless Steel Polish” to protect the surface after cleaning.

Never use cleaners containing harsh abrasives or high bleach contents. Prolonged contact with chlorine-based cleaners will cause surface pitting, which cannot be repaired.

Never use abrasive materials such as scouring pads, steel wool or metallic scrapers.

For stubborn stains or where “deep cleaning” is required, a mild abrasive cleaner or rust remover may be required.

Warranty

5-year warranty. View the [warranty](#) for more details.

Customisable

Custom specify your [Corian® colour](#) to co-ordinate with your interior palette. Corian® colours are categorised A to E with A being the basic Glacier White colour, and E category being the most expensive organic colours.

Please be aware that the Cottesloe bin body has seamless joins when specifying organic Corian® colours with a grain. The grain will not pattern match across the joins.

Additional Comments

The triple size has gas lift struts for easy removal of liners.

COTTESLOE LITTER BIN TRIPLE

Bins » Litter Bins

Colour & Finish Options

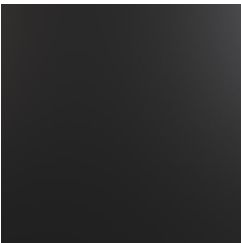
B+G Powder Coat - Core AU



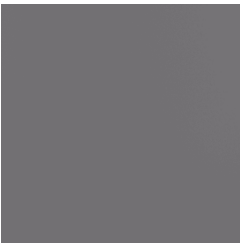
Black - Satin



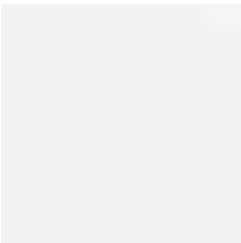
Charcoal - Satin



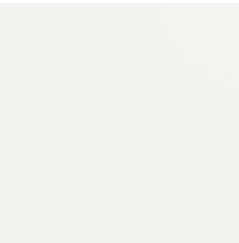
Matt Black - Matt



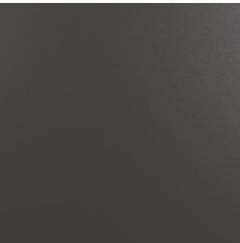
Palladium Silver - Satin



Pearl White - Gloss



White - Satin



Monument Texture

B+G Powder Coat - Bold AU



Bondi Blue - Gloss



Leaf - Satin



Lobster - Satin



Moonlight - Satin



Sensation - Gloss

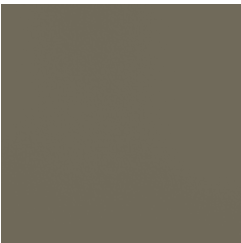
B+G Powder Coat - Signature AU



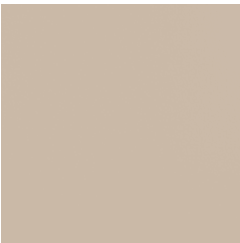
Claypot - Satin



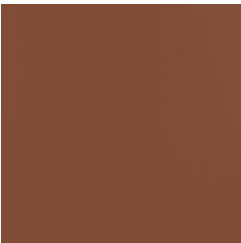
Deep Ocean - Satin



Mangrove - Satin



Paperbark - Satin



Territory Red - Matt

COTTESLOE LITTER BIN TRIPLE

Bins » Litter Bins



Wedge wood - Satin

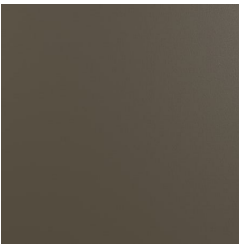
B+G Powder Coat - Solid AU



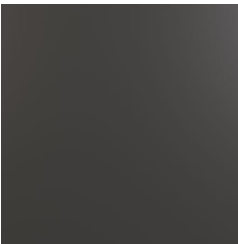
Coffee - Satin



Cove - Satin

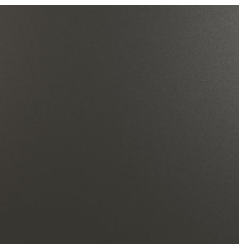


Medium Bronze
Kinetic - Flat

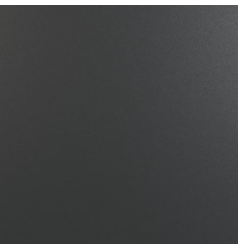


Monument - Matt

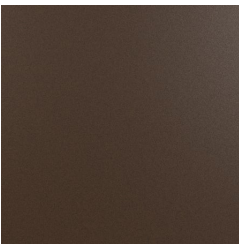
B+G Powder Coat - Textured AU



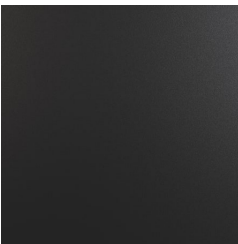
Asteroid



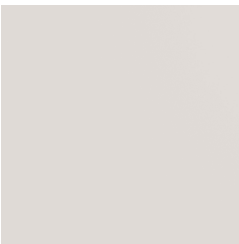
Bass



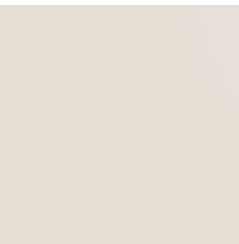
Core Ten



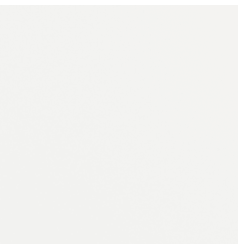
Textura Black



Textura Dune



Textura Primrose



Textura White