

# POWDERCOATS - METALCO

Powdercoating gives a uniform, durable, high quality and attractive finish that is low in VOCs. As well as being better for the environment, powdercoated surfaces are more resistant to chipping, scratching, fading and wearing than its alternatives. This cost-effective finish has great UV resistance and durability in the elements.

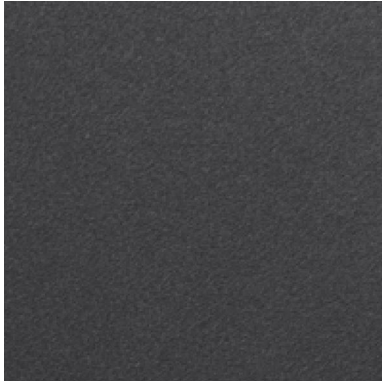


## CARE + MAINTENANCE

1. Carefully remove any loose surface deposits with a wet sponge.
2. Use a soft (non abrasive) cloth or brush and a diluted solution of mild detergent and water (DO NOT use solvents) to remove dust, salt and other deposits.
3. Ensure surfaces are thoroughly rinsed with clean fresh water after cleaning to remove all residues.

# SABLE POWDERCOATS - METALCO

Sable powdercoats available, surcharge applies. This range has a finer texture than Metalco standard powdercoat range and metallic flecks.



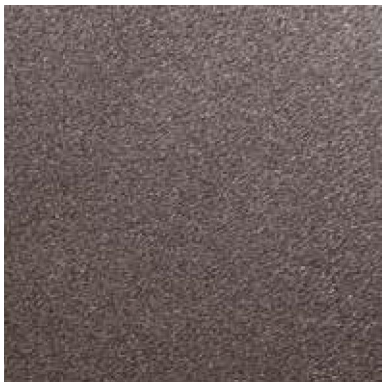
200 BLACK SABLE



250 GREY SABLE



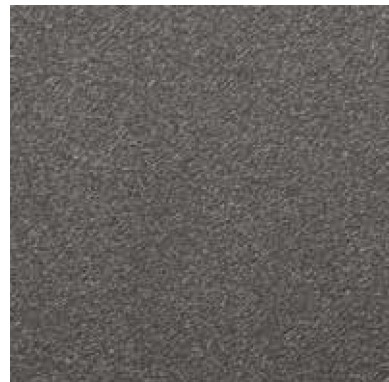
300 GREEN SABLE



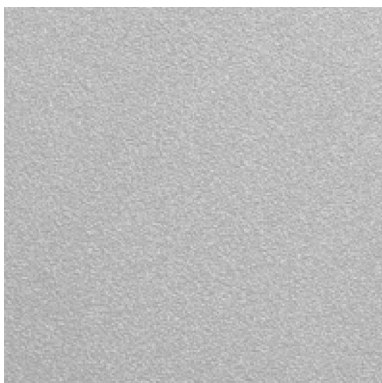
650 BROWN SABLE



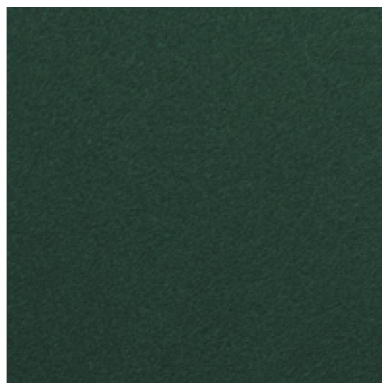
700 BLUE SABLE



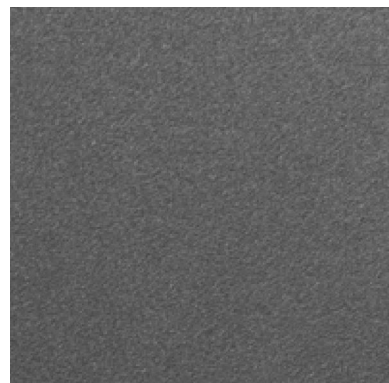
900 DARK GREY SABLE



3021 SILVER SABLE



500 GREEN MUSK SABLE



IRON GREY